

# Board of Directors Meeting Agenda

May 8, 2026

9:00 am

**Voting Rules:** *Unless otherwise indicated on this agenda, all Directors have one vote and a simple majority is required for a motion to pass.*

---

	<b>Pages</b>
<b>1. Call to Order</b>	
1.1 Presentation: Jamie Davies, General Manager of Operations - 10 Years of Service	
<b>2. Addition of Late Items</b> <i>All Directors, 2/3</i>	
<b>3. Adoption of the Agenda</b>	
<b>4. Adoption of the Minutes</b>	
4.1 April 10, 2026 Meeting (backup to follow)	
<b>5. Invited Presentations &amp; Delegations</b>	
5.1 Jim Pattison Centre for Health System Learning & Innovation Betty Brown and Dr. Deanne Taylor	3
5.2 Jumbo Resources Ltd. - Kootenay Trail Network Project John Bell	13
<b>6. Correspondence</b>	
6.1 Columbia River Treaty Local Government Committee Update	24
6.2 Office of the Ombudsperson - Quarterly Report	27
<b>7. Unfinished Business</b>	
<b>8. New Business</b>	
<b>9. Committee Recommendations</b>	
9.1 Columbia Valley Services Committee	
9.2 Electoral Area Services Committee	
9.3 Elk Valley Services Committee	

9.4	Governance & Regional Services Committee	
9.5	Planning & Development Services Committee	
<b>10.</b>	<b>Bylaws</b>	
10.1	Bylaw No. 3463 - Columbia Valley Subregion Waste Management Regulatory Amendment Bylaw - Three Readings and Adoption <i>CV Directors, Weighted (adoption requires 2/3)</i>	33
10.2	Bylaw No. 3464 - Elk Valley Subregion Waste Management Regulatory Amendment Bylaw - Three Readings and Adoption <i>EV Directors, Weighted (adoption requires 2/3)</i>	35
10.3	Bylaw No. 3465 - Eddie Mountain Memorial Arena Regulation and Fee Amendment Bylaw - Three Readings and Adoption <i>CV Directors, Weighted (adoption requires 2/3)</i>	37
<b>11.</b>	<b>Planning Bylaws</b>	
11.1	Bylaw No. 3446 - Kimberley Rural Official Community Plan Amendment Bylaw (Meadowbrook / Redding) - Adoption	40
11.2	Bylaw No. 3447 - Electoral Area E Zoning and Floodplain Management Amendment Bylaw (Meadowbrook / Redding) - Adoption	47
11.3	Bylaw No. 3451 - Jaffray, Tie Lake, Rosen Lake Land Use and Floodplain Management Amendment Bylaw (Jaffray / Damstrom) - Adoption	49
11.4	Bylaw No. 3456 - Lake Koochanusa Official Community Plan Amendment Bylaw (Koochanusa Village / KV Properties Inc.) - Two Readings	53
11.5	Bylaw No. 3457 - SweetWater Zoning and Floodplain Management Amendment Bylaw (Koochanusa Village / KV Properties Inc) - Two Readings	55
11.6	Bylaw No. 3456 & Bylaw No. 3457 - Public Hearing & Delegation	57
<b>12.</b>	<b>Late Agenda Items</b>	
<b>13.</b>	<b>Reports from Directors</b>	58
<b>14.</b>	<b>Adjourn to Closed</b>	

## Nikki Bradshaw

---

**Subject:** Request for the Jim Pattison Centre for Health Systems Learning + Innovation to present to the full RDEK Board on May 8th

---

**From:** Betty Brown <[betty.brown@jpcentre.ca](mailto:betty.brown@jpcentre.ca)>

**Sent:** March 12, 2026 2:37 PM

**To:** Tina Hlushak <[thlushak@rdek.bc.ca](mailto:thlushak@rdek.bc.ca)>

**Cc:** Mike Gray <[mayer@radiumhotsprings.ca](mailto:mayer@radiumhotsprings.ca)>

**Subject:** Request for the Jim Pattison Centre for Health Systems Learning + Innovation to present to the full RDEK Board on May 8th

Hello Officer Hlushak,

I am writing to request the opportunity to present at the Regional District of East Kootenay (RDEK) May meeting on person in Cranbrook on **Friday, May 8th**. I first raised our interest with Mayor Gray and he felt it would be a good fit.

We would welcome the chance to share the exciting news about the [Jim Pattison Centre for Health Systems Learning + Innovation](#) (JPC) and outline the benefits it can bring to local communities. I've attached our recent FAQ to provide additional details.

### **Our objectives for the presentation**

- Inform Board members about the support available through the JP Centre to strengthen health systems in RDEK communities
- Respond to questions
- Listen to initial insights that can guide engagement and innovation
- Explore ideas for future collaboration

### **Our value to RDEK**

The JP Centre is an independent organization dedicated to enhancing health systems and fostering innovation across BC. It was co-created by Interior Health and the KGH Foundation, with meaningful input from community and Indigenous partners.

In simple terms, we often describe the Centre as a **“barrier buster”**—a neutral convening space that helps good ideas move forward more quickly.

The Centre was established less than a year ago to accelerate innovative healthcare ideas and turn them into practical, scalable solutions. It provides a collaborative environment for testing, learning, and implementing sustainable improvements that serve the public good.

Our support includes:

- Project development
- Evaluation
- Knowledge mobilization
- Legal and ethical guidance

- Connections to partners and resources that enable sustainable change

Individuals or organizations with ideas or initiatives can connect with the JP Centre directly. We are actively engaging with potential partners and developing communication channels to keep stakeholders informed of our work and opportunities for involvement.

We would be grateful for the opportunity to present and begin a conversation about how we can support innovation and improved health outcomes within the RDEK.

JP Centre CEO Dr. Deanne Taylor and I will present a short PowerPoint followed by questions. We hope to have a conversation relevant to RDEK to identify some next steps toward future potential collaboration. I look forward to hearing from you.

Warm regards, Betty

**Betty Brown (she/her)**

Innovation Liaison: Government and Community  
**Centre for Health Systems Learning + Innovation**  
**(M) 250-212-0558**

Email: [betty.brown@jpcentre.ca](mailto:betty.brown@jpcentre.ca)

<https://jpcentre.ca>

I work part-time hours. Thank you for your patience if my response is delayed.



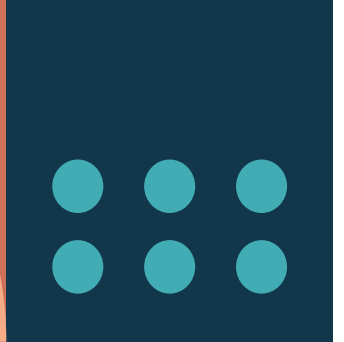
**Jim Pattison**  
Centre for Health Systems  
Learning + Innovation

I acknowledge that my work place is within the ancestral, traditional, and unceded territory of the Syilx Nation.



Jim Pattison  
Centre for Health Systems  
Learning + Innovation

## FAQs About our Centre



## Background

### Q: What is the Jim Pattison Centre for Health Systems Learning + Innovation?

The Jim Pattison Centre for Health Systems Learning + Innovation (JP Centre) is a new, independent learning organization created to accelerate innovation and strengthen health systems across British Columbia (BC).

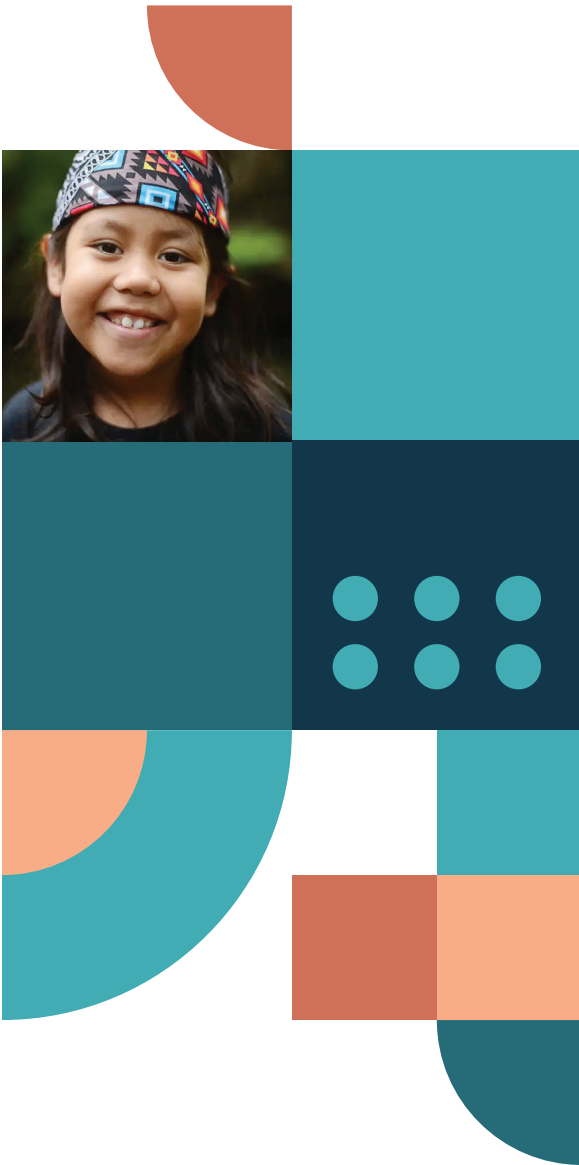
Co-created by Interior Health (IH) and the Kelowna General Hospital (KGH) Foundation, with input from community, clinical, academic, and Indigenous partners including representatives from the 7 First Nations and Metis communities within the Interior, the JP Centre serves as a hub for collaboration, learning, and practical innovation that improves care for all.

### Q: Why was the JP Centre created?

The JP Centre was established to bridge the gap between great ideas and real-world solutions in healthcare. Too often, innovative ideas remain siloed or under-supported. The JP Centre provides a flexible and collaborative environment where promising ideas can be tested, scaled, and sustained to improve health outcomes and system performance.

### Q: What is the JP Centre's relationship to Interior Health and the KGH Foundation?

The JP Centre operates as a fully independent social enterprise for-profit organization. IH and the KGH Foundation are founding partners who provide strategic guidance and support; however, the JP Centre's structure allows it to act nimbly and neutrally collaborate broadly and engage diverse partners across BC's health ecosystem.



## Business Model and Services

### Q: How does the JP Centre operate financially?

The JP Centre operates under a for-profit business model designed to enable long-term sustainability of health innovations and reinvestment back into the cycle of health innovation discovery and application. Any profits generated through the Centre's activities are reinvested directly into supporting health innovation and health systems learning, supporting new ideas, applied research, and partnerships that align with the Centre's themes and priorities.

This model allows the Centre to remain financially self-sustaining while continuing to be a catalyst for transformational innovation and learning across BC's health system. It combines the agility of a business approach with a clear commitment to advancing health innovation for social good.

### Q: How does the JP Centre make decisions?

The JP Centre uses a consensus distributed decision-making model that brings together a range of content expertise to guide decisions and investments. This includes:

- **Scholarly expertise** – grounding decisions in evidence, research, and best practices.
- **Lived and living experience** – ensuring the perspectives of patients, families, and communities are central to our work.
- **Health system perspectives** – drawing on the insights of clinicians, leaders, and operational experts to align innovations with local and community priorities and needs.
- **Health system data** – seeking, analyzing, and generating new knowledge from practice data and exploring integration into practice to support a learning health system.

This collaborative approach ensures that decisions are well-rounded, equitable, and grounded in the realities of both communities and the health system.



## Q: What services does the JP Centre provide?

The JP Centre offers a range of supports designed to move health innovation from idea to impact.

### Idea Exploration & Consultation

- Talk through your idea, get quick advice, or identify next steps.
- Perfect if you are still shaping your concept or unsure what kind of support you need.

### Connection & Partnership Facilitation

- We help you connect with the right people, programs, or opportunities including collaborators, funders, and organizational partners.

### Funding Navigation & Grant Support

- Guidance on identifying funding opportunities and preparing strong applications.
- Can include letters of support or introductions to partners to strengthen your proposal.

### Engagement & Facilitation

- Support for engaging communities, health systems, and other partners.
- Includes facilitation for meetings or collaborative planning sessions.

## Q: Who does the JP Centre work with and support?

We work with a wide range of partners including health system leaders, clinicians, researchers, innovators, interest groups, community organizations, Indigenous and rural partners, and individuals with lived and living experience. The Centre's focus is on enabling collaboration that leads to meaningful, sustainable change.

### Project Development & Implementation

- Help to scope, design, and bring your project to life.
- Includes advice on team building, partnerships, practical implementation steps, and sustainment.

### Evaluation & Health Systems Learning

- Support to design evaluation plans, develop metrics, carry out quality improvement, and measure impact.

### Knowledge Mobilization & Communication

- Help sharing your results, translating insights into practice, and reaching the right audiences.

### Contracting & Legal Guidance

- Assistance developing MOUs, service agreements, or other project-related contracts.



## Strategy and Engagement

### Q: What is the plan for developing the JP Centre's long-term strategy?

The JP Centre is currently developing a comprehensive three-year strategic plan. This will be co-created through an in-depth engagement process with interest holders and rights holders across the Interior and the Province. The goal is to ensure the strategy reflects shared priorities, community wisdom, and diverse perspectives on what innovation and health systems learning could look like in practice.

### Q: How will engagement take place?

The engagement process will include a mix of approaches designed to invite diverse voices and perspectives. These may include:

- One-on-one and small group conversations  
Workshops and listening sessions.
- Virtual and in-person forums
- Collaborative sensemaking sessions to synthesize insights into shared directions and priorities.
- Participation in community events and other gatherings when invited, to listen, learn, and strengthen relationships.





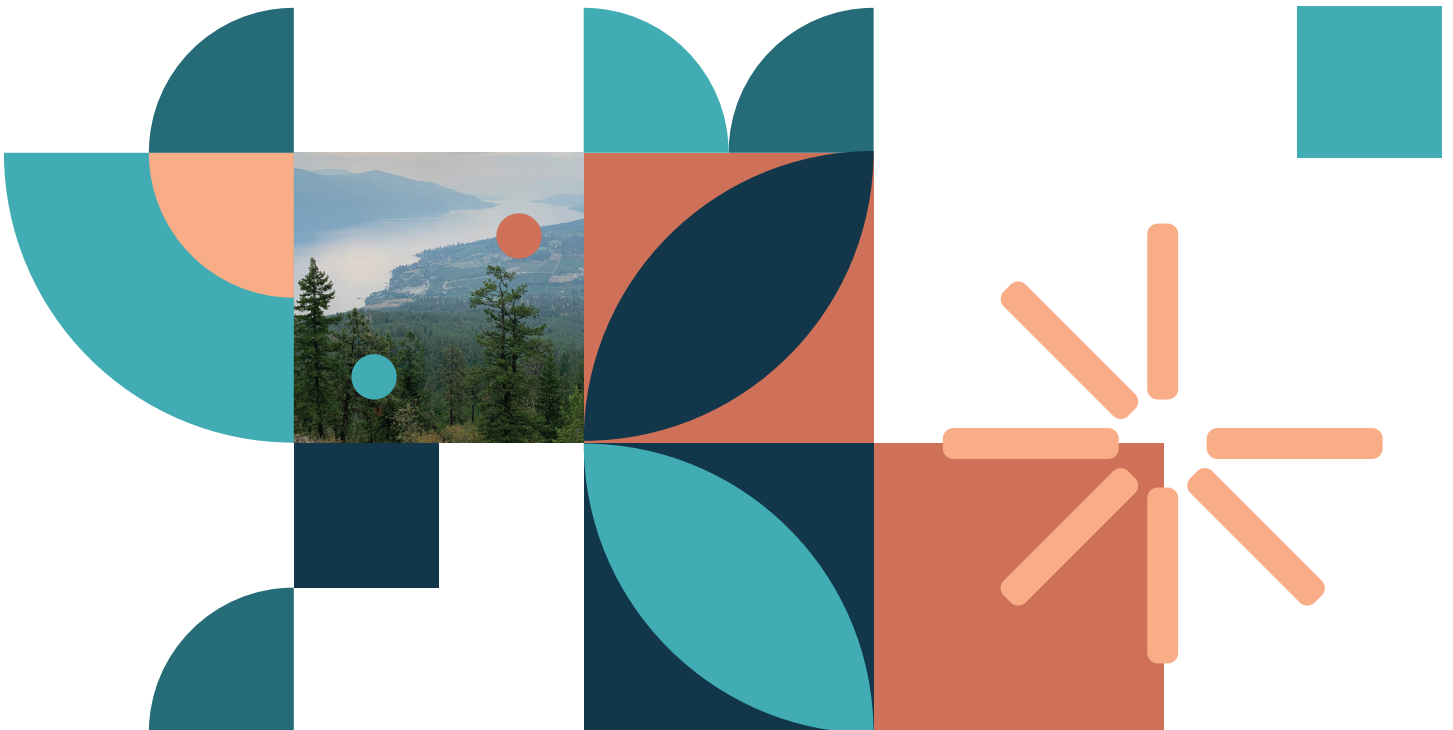
## Q: What will the strategy focus on?

While the final strategy will be shaped by engagement input, key focus areas are expected to include:

- Building capacity for innovation across health and community settings.
- Strengthening collaboration across organizations, sectors, and disciplines.
- Accelerating real-world testing and real-time learning.
- Embedding equity, reconciliation, and lived experience at the core of all work.

## Q: When will the strategy be complete?

The engagement and strategy development process will unfold over 2025-2026, with the final three-year strategy anticipated for release in Fall 2026.



## Working with the JP Centre

### Q: How can I collaborate with the JP Centre?

Anyone interested in collaborating with the Jim Pattison Centre for Health Systems Learning + Innovation is welcome to reach out directly by email at [info@jpcentre.ca](mailto:info@jpcentre.ca).

The Centre officially opened in July 2025 and is still in the development stage—building our team, processes, and partnerships. At the same time, we are already actively engaging with individuals and organizations who want to share ideas or explore opportunities for collaboration across a broad range of health and system innovation topics.

Whether you are developing a new idea, seeking partners to test a concept, or simply curious about how the Centre can support your work, we would be happy to connect and explore potential alignment.

### Q: How can I stay informed about the JP Centre's work?

The JP Centre is in the process of developing regular updates and communication channels to keep partners and communities informed about the Centre's activities. These will include:

- Updates on our website
- A regular newsletter
- Opportunities to participate in community and partner forums.
- Occasional social media updates and event announcements

As these channels are developed, we will share information on how to subscribe and stay connected. In the meantime, please feel free to contact us at [info@jpcentre.ca](mailto:info@jpcentre.ca) for more information or to be added to our early contact list. Thank you for your interest in staying connected with the JP Centre!



Scan to learn more about the [jpcentre.ca](http://jpcentre.ca)



Jim Pattison  
Centre for Health Systems  
Learning + Innovation

## Contact

For general inquiries or  
partnership opportunities:

[info@jpcentre.ca](mailto:info@jpcentre.ca)  
[www.jpcentre.ca](http://www.jpcentre.ca)

## Nikki Bradshaw

---

**Subject:** FW: Reconnecting East and West Kootenay's  
**Attachments:** Proposal for Connecting East and West Kootenay.pdf

---

**From:** John Bell  
**Sent:** December 1, 2025 9:22 AM  
**To:** Nikki Bradshaw <nbradshaw@rdek.bc.ca>  
**Subject:** Reconnecting East and West Kootenay's

Good morning Nikki:

**Subject:** Request to Present on Kootenay Trail Network Project to RDEK Governance and Regional Services Committee/Board

**Dear RDEK Committee/Board Members,**

I am writing to request an opportunity to present on a proposed community-sourced mountain bike and e-mountain bike (eMTB) trail network connecting the East and West Kootenays via Earl Grey Pass and/or Jumbo Pass. This initiative, developed in alignment with BC Recreation Sites and Trails standards as an Authorized Trail Area, promises substantial economic, health, and cultural benefits for the region, particularly the underutilized northern Kootenay Lake area (Argenta, Lardeau, Meadow Creek). See attached Executive Summary for more information on the proposed project

**Economic Merits:** The trail will boost tourism by attracting riders to this pristine wilderness, extending the season with year-round activities like fat-tire biking. It addresses the economic gap between the two Kootenay's by stimulating lodging, dining, and services. Job creation in trail maintenance, guiding, and hospitality will counter population declines, leveraging partnerships with the Nelson Cycling Club and Columbia Valley Cycling Society. Low-cost domestic BC Hydro power enables affordable eMTB charging stations at trailheads and community hubs, enhancing accessibility and visitor dwell time without costly infrastructure upgrades.

**Health Benefits:** The network promotes inclusive physical activity, mental well-being, and community engagement, making trails accessible via eMTBs for diverse demographics.

**Cultural Uniqueness:** Integrating the historic beef trail and mining heritage, with interpretive signage and Indigenous collaboration (Ktunaxa, Sinixt, Syilx), enriches rider experiences and fosters cultural pride. This project aligns with regional strategies like the North Kootenay Lake Rural Revitalization Program and Columbia Basin Trust initiatives, ensuring sustainability and community ownership. I believe a 10-minute presentation could highlight how this trail network will drive long-term prosperity for the RDEK.

**Environmental Benefits:** This initiative capitalizes on the ability to utilize world-class low-priced, sustainable BC Hydro for e-bike charging. Establishing these trails enable crossings in 3-5 hours with zero emissions, vs. 300km, 6-hour drives around the Purcell's—slashing time and carbon footprint.

RDEK's leadership can propel this forward!

My son, Scott Bell, is a city planner having worked for both Calgary and Vancouver districts, may attend in person with me. He will be helpful for setting up the presentation material

Thank you for considering this request.

Sincerely,  
John Bell PGeol  
President, Jumbo Resources Ltd

**Proposal for Connecting East and West Kootenay's via a Community-Sourced Mountain Bike and e-Mountain Bike Trail Network**  
**Prepared by: John Bell, President Jumbo Resources Ltd**

**Date: July 18, 2025**



## Executive Summary

We propose the development of a community-sourced mountain bike and e-mountain bike (eMTB) trail network connecting the East and West Kootenay's through either Earl Grey Pass or Jumbo Pass. This initiative aims to create a world-class, sustainable trail system that leverages the region's natural beauty, rich cultural history, and vibrant biking community to deliver significant economic, health, and cultural benefits. The project will align with the BC Recreation Sites and Trails mandate, ensuring all trails are developed as an "Authorized Trail Area" in partnership with local organizations such as the Nelson Cycling Club and the Columbia Valley Cycling Society in Invermere. By integrating the region's unique Beef Trail and mining history, this trail network will offer an unparalleled recreational and cultural experience, fostering community pride, tourism, and sustainable outdoor recreation.

## Project Overview Objective

To establish a multi-use, community-sourced mountain bike and eMTB trail network connecting the East and West Kootenay's, utilizing either Earl Grey Pass and/or Jumbo Pass, to promote economic growth, enhance public health, and celebrate the region's cultural uniqueness, while adhering to BC Recreation Sites and Trails standards, namely at:

**Earl Grey Pass:** A 61 km trail through the Purcell Mountains, historically used by First Nations and miners in the late 1800s, connecting Toby Creek (near Invermere) to Argenta near Kootenay Lake. This route offers diverse terrain, from old-growth forests to challenging river crossings, and is steeped in history, including Earl Grey's 1909 cabin. The recent Hamill Creek fire of 2024 offers a perfect opportunity to engage in properly rebuilding this landmark trail without the fear of blowdowns for another generation or more

**Jumbo Pass:** A shorter, high-alpine route in the Purcell Mountains, accessible from Invermere, offering stunning views and technical single-track. This pass is less logistically complex but equally scenic, with potential for integration into existing trail networks like those at Panorama Resort

Both routes would be evaluated for environmental impact, trail sustainability, and community support to determine the optimal path

## Benefits Economic

**Tourism Boost:** The Kootenay's are already a renowned mountain biking destination, with Nelson and Invermere attracting riders globally. A connected trail network will enhance the region's appeal, drawing more visitors to events like Sufferfest and the Fat Tire Festival. In 2022, mountain biking tourism in BC contributed millions to local economies, with Nelson and Invermere seeing significant revenue from bike shops, accommodations, and dining

**Job Creation:** Trail construction, maintenance, and related services (e.g., bike rentals, guiding) will create jobs for local residents. Partnerships with organizations like the Nelson Cycling Club and Columbia Valley Cycling Society will support trail crew employment and volunteer opportunities

**Local Business Growth:** Increased visitor traffic will benefit local businesses, including Kicking Horse Coffee and Arrowhead Brewing Company in Invermere, and eateries like Frog Peak Cafe and Ymir General Store along the route. The trail's proximity to hot springs (e.g., Ainsworth and Fairmont) will further drive tourism revenue. The closure of the sole restaurant and pub in Meadow Creek has left a gap in local amenities, reducing the area's capacity to attract and retain visitors. The development of a world-class trail network can address this gap, revitalizing tourism, lodging, and the broader local economy in the following ways

## Health Benefits

**Physical Activity:** The trail network will encourage outdoor recreation, promoting cardiovascular health, muscle strength, and mental well-being. eMTBs make trails accessible to a broader demographic, including older adults and those with physical limitations, fostering inclusive fitness opportunities

**Mental Health:** Immersion in nature, as experienced on trails like those in the Kootenai's, reduces stress and enhances mental clarity. The peaceful, crowd-free settings of Earl Grey and Jumbo Pass provide ideal environments for mindfulness and relaxation

**Community Engagement:** Collaborative trail-building and maintenance by groups like the Nelson Cycling Club and Columbia Valley Cycling Society foster social connections, reducing isolation and building community resilience

## Cultural Uniqueness

**Beef Trail Connection:** The trail will highlight the Kootenay's historic "beef trail," a route used to transport cattle in the 19th century, connecting to the region's ranching heritage. Interpretive signage can educate riders about this legacy, enriching their experience

**Mining History:** Both Earl Grey and Jumbo Pass traverse areas significant to the Kootenay mining boom in the late 1800s. Trails near abandoned sites like the Mineral King mine (near Jumbo Pass) can feature historical markers, celebrating the region's industrial past and its transition to recreation-based tourism

**Indigenous Heritage:** The trails cross Sinixt, Syilx, and Ktunaxa lands, offering opportunities to collaborate with Indigenous communities to incorporate cultural storytelling, such as the history of pit houses at Xat'sūll Heritage Village or Nisga'a connections to the land

## Economic Development Potential

### Tourism Growth

The northern Kootenay Lake area is already recognized for its stunning natural beauty, including pristine rivers, lakes, and backcountry trails like Monica Meadows, Jumbo Pass, and Earl Grey Pass. A dedicated mountain bike and eMTB trail network would amplify this appeal by creating a marquee attraction for adventure tourists, particularly mountain bikers, who are a growing demographic in British Columbia. In 2022, mountain biking tourism in BC generated millions in revenue for communities like Nelson and Invermere, and a similar impact is feasible for the northern Kootenay Lake area. A dedicated trail system will mean less cars on the highways and will offer a truly world class experience being able to move from one side to the other in a fraction of the time it takes to highway drive in order to reach these areas through:

**Increased Visitor Numbers:** The trail network would draw domestic and international riders, leveraging the region's proximity to Nelson (a hub for mountain biking) and the Kootenay Lake Ferry, the longest free scenic ferry ride in the world. Events like Sufferfest or a new "Kootenay Traverse" race could attract hundreds of participants and spectators, boosting visitor numbers

**Seasonal Extension:** A trail network can operate year-round, with summer biking and winter fat-tire biking or snowshoeing. This extends the tourism season beyond summer, into the shoulder seasons stabilizing revenue for local businesses

**Eco-Tourism Opportunities:** The area's pristine wilderness and low population density make it ideal for eco-focused travelers. Partnerships with eco-tourism operators, as noted in the region's hiking offerings, could bundle trail access with sustainable lodging and guided tours, appealing to environmentally conscious visitors

### The Kootenay's Competitive Advantage – cheap sustainable power

#### Low Electricity Costs

BC Hydro offers some of the lowest electricity rates in North America, with residential rates averaging around 10-12 cents per kWh in rural BC (as of 2025). In the northern Kootenay Lake area, where population density is low (approximately 400 residents across seven communities), electricity demand is minimal, making the grid underutilized and ideal for supporting new infrastructure like eMTB charging stations

#### Clean Energy Source

BC Hydro generates over 90% of its electricity from renewable hydroelectric power, aligning with the region's eco-tourism ethos and the "Play Clean Go" principles of sustainable trail development. This clean energy minimizes the environmental footprint of eMTB charging compared to fossil fuel-based alternatives



## Existing Infrastructure

Recent investments, such as the 2023 high-speed internet and infrastructure upgrades in Argenta and surrounding areas, indicate reliable electrical grid access. Facilities like the WiFi-enabled Davis Creek campground as well as the well connected municipality of Panorama, demonstrate the region's capacity to integrate modern amenities, making eMTB charging stations a feasible addition

The existing, underutilized and cost-effective BC Hydro Electricity is a powerful asset for developing eMTB charging infrastructure to support the proposed trail network. By offering affordable, clean energy, the region can attract a diverse range of riders, boost tourism, and stimulate economic activity in both the East and West Kootenay's. Charging stations would aid in the creation of new opportunities for hospitality, job creation, and community engagement while reinforcing the area's commitment to sustainability and cultural heritage. This initiative would solidify the Kootenay's as a premier eMTB destination, driving long-term prosperity in alignment with BC Recreation Sites and Trails standards

## Lodging Revitalization

Lodging resources would stand to benefit significantly:

**New Lodging Opportunities:** The trail's appeal could spur the development of campgrounds, glamping sites, or eco-lodges, similar to those at Davis Creek and Lost Ledge campgrounds, which offer lakefront access and stunning views. For example, a reopened or new pub could double as a lodge or café, serving as a trailhead hub with bike rentals, food, and accommodation

**Existing Infrastructure Utilization:** Existing resorts and campgrounds in the Lardeau Valley, as mentioned in tourism resources, could expand to accommodate trail users. The trail's connection to Kootenay Lake Park, with its WiFi-enabled Davis Creek campground, could attract remote workers seeking a "working sabbatical" while biking

**Economic Multiplier Effect:** Lodging revenue would support related services like guiding, shuttle services (e.g., to trailheads), and bike rentals, as seen with Kootenay Lake Paddle Sports at Davis Creek. This would create a self-reinforcing cycle of tourism-driven growth

## Community Involvement

### Local Biking Community

**Nelson Cycling Club:** A key partner, the NCC has a proven track record of managing trails like Mountain Station and Giveout, which are part of BC Recreation Sites and Trails' Authorized Trail Areas. Their expertise in trail design, maintenance, and community engagement will ensure the project aligns with local needs and BC Parks standards

**Columbia Valley Cycling Society (Invermere):** This group maintains trails at Mt. Swansea and Lillian Lake, offering shuttle-accessed and cross-country options. Their involvement will ensure trails are sustainable and meet the needs of diverse riders, including eMTB users

**Community Collaboration:** Trail-building will involve volunteers, local riders, and Indigenous groups, fostering a sense of ownership and pride. Workshops, like those described at Xat'sūll Heritage Village, can integrate cultural education with trail development

### Alignment with BC Recreation Sites and Trails

**Authorized Trail Area:** The trail network will be developed in partnership with BC Recreation Sites and Trails to ensure compliance with environmental and safety standards. Existing Authorized Trail Areas, like those at Morning Mountain (Nelson) and Lillian Lake (Invermere), provide a model for sustainable trail management

**Environmental Stewardship:** Trails will minimize soil disruption and avoid invasive species zones, adhering to "Play Clean Go" principles. Regular maintenance by local clubs will ensure long-term sustainability

**Safety and Signage:** Trail markers, emergency access points, and clear signage (as seen in the Lillian Lake network) will enhance rider safety and align with BC Parks guidelines

## Implementation Plan Phase

### Planning and Consultation (6-12 months)

Conduct feasibility studies for Earl Grey Pass and Jumbo Pass, assessing environmental impact, trail difficulty, and cultural significance

Engage with Nelson Cycling Club, Columbia Valley Cycling Society, and Indigenous communities (Sinixt, Syilx, Ktunaxa) to co-design the trail network

Secure permits from BC Recreation Sites and Trails to establish the trail as an Authorized Trail Area

### **Phase 2: Trail Development (12-24 months)**

Construct trails with sustainable materials and techniques, prioritizing low-impact design

Install interpretive signage highlighting beef trail and mining history, developed in collaboration with local historians and Indigenous groups

Develop eMTB-friendly sections to ensure accessibility, drawing on expertise from Electric Larry Land (Nelson) and Columbia Cycle & Ski (Invermere)

### **Phase 3: Promotion and Maintenance (Ongoing)**

Launch the trail with a community event, supported by Nelson and Invermere bike shops and tourism boards

Establish a maintenance fund through donations (e.g., Trail Karma) and grants, similar to those awarded in 2019 and 2025 for Kootenay trails

Promote the trail through Nelson Kootenay Lake Tourism and Mountain Biking BC, leveraging platforms like Pinkbike, Trailforks, AllTrails and Strava

## **Budget Estimate**

Planning and Consultation: \$50,000 (feasibility studies, community engagement)

Trail Construction: \$500,000 (labor, materials, signage)

Promotion and Events: \$30,000 (marketing, launch event)

Maintenance Fund: \$20,000/year (ongoing trail upkeep)

Total Initial Investment: **\$580,000**

## **Funding Sources:**

Private donations, Provincial grants (e.g., ORV Trail Fund), donations via Trail Karma, and contributions from local businesses and tourism boards

## Conclusion

The proposed mountain bike and eMTB trail network connecting the East and West Kootenay via Earl Grey or Jumbo Pass will deliver substantial economic, health, and cultural benefits. By celebrating the region’s unique history, engaging local biking communities like the Nelson Cycling Club and Columbia Valley Cycling Society, and adhering to BC Recreation Sites and Trails standards, this project will create a sustainable, inclusive, and iconic trail system. Wearable GPS devices such as Strava already show people on both sides of the Kootenay’s are trying very hard to connect. This project would enable it to happen in a much safer, more enjoyable way. We seek support from stakeholders to bring this vision to life, fostering a legacy of recreation, community, and cultural pride in the Kootenay’s

## About the Author

John Bell is a Geologist with over 40 years of experience in both Mineral Exploration as well as Oil and Natural Gas exploration. An avid skier and mountain biker, he’s been a resident at Panorama BC since 1973. Most recently, he operated and owned one of Canada’s largest backcountry Skiing and Hiking operation; Golden Alpine Holidays Inc. based in Golden BC from 2006-2020. John is also working alongside western Canadian based production companies and the local Regional District East Kootenay in order to bring the movie industry to the Columbia Valley. Most recently, operating as an Executive Producer for the movie “All Night Wrong” shot entirely in SE BC

## Contact

Email: [jumbo5@shaw.ca](mailto:jumbo5@shaw.ca)

Landline: [REDACTED]

Cell/Text: [REDACTED]



## COLUMBIA River Treaty



**To:** Columbia - Kootenay Basin government elected officials  
and local government CAOs

**Date:** April 13, 2026

**From:** Linda Worley, Chair  
Columbia River Treaty Local Governments Committee

### **Subject: Update on CRT Local Government Committee Activities**

In March 2025 the province announced the pause in the international activities to modernize the Columbia River Treaty (CRT), in light of new developments from the U.S. Consequently, over the past year the Committee's activities have been focused on understanding and monitoring the implementation of the [interim agreements](#) for elements of the 2024 [Agreement-in-Principle](#) that resulted from the negotiations to date, and continuing to seek solutions to domestic issues. This memo provides highlights on our new and ongoing priorities.

Since my last update memo in March 2025, the Committee has held twelve virtual meetings including updates from the BC CRT Team and information sharing sessions with the CRT First Nations representatives.

#### **New Priorities**

##### **Flood Risk Management**

Flood risk management is one of the primary purposes of the CRT, along with power generation in B.C. and the U.S., and a priority interest of communities. In the fall of 2025 the Committee became aware that a new Flood Risk Operating Plan had been finalized between the Entities responsible for implementing the Treaty, including BC Hydro for Canada. This new plan results from the interim agreement for pre-planned flood risk management for U.S. flood risk management that limits storage and flow management to Arrow Lakes Reservoir only – in the past the treaty requirements included flood risk management storage in Kinbasket and Duncan reservoirs as well. The U.S. now pays \$36.7M to the province for each year that they request pre-planned flood risk management. This interim agreement ends in July 2027.

We have reviewed the new plan and have raised questions with the province and BC Hydro about some aspects of the plan and how domestic flood risk management will be managed now. In their 2025 annual operations updates BC Hydro indicated that there will not be 'material' difference in domestic flood risk management compared to past operations. We are seeking a better understanding of this description.

We are also monitoring for any activities regarding the future of CRT flood risk management arrangements beyond the end of the current interim agreement in July 2027.

##### **Changes at the BC Ministry of Energy and Climate Solutions**

Kathy Eichenberger, the Executive Director of the BC CRT Team, has announced her retirement at the end of June. The Committee deeply appreciates Kathy's capable leadership of the Team from its beginning based on her deep personal knowledge of the Columbia – Kootenay Basin and our communities as well as her commitment to advocating for CRT modernization to improve ecosystems, socio-economic conditions and Indigenous cultural values across the Basin. The Committee will be recognizing Kathy's contributions appropriately.

Les MacLaren, the Assistant Deputy Minister responsible for the BC CRT Team has also retired. Les also has a long affiliation with the region, including being involved during the creation of the CBT.

We are meeting with the new Executive Director and Assistant Deputy Minister this month and will encourage them to get to know the region as quickly as possible, including offering to tour them through the Basin – a challenge while the province has travel restrictions.

### **Maintaining Engagement in Regional Hydro Operations**

During the past 15 years while the CRT Review was ongoing and during the negotiations phase, the Committee and the BC CRT Team collaboratively held over 30 community engagement activities and the BC CRT Team hosted several virtual info sessions. This developed a cadre of well-informed residents who have been keen to provide feedback and thoughts about regional hydro operations. The ongoing pause in negotiations, with its uncertain timeline, creates the risk of losing this resident expertise. The Committee is considering ways to continue to engage residents and local governments. Please share your ideas with Committee members (listed below).

Wildsight has organized another series of [Columbia River Conversations](#) field trips to Kinbasket Reservoir, Arrow Lakes Reservoir in Revelstoke and Nakusp and Duncan Reservoir. Join in to learn .

### **Ongoing Priorities**

- **BC Hydro community communications and engagement** – The Committee continues to press BC Hydro for improved communications and engagement with our communities. We have seen some improvements and continue to advocate for further improvements to meet the needs of our communities, including meeting with and sending suggestions to the BC Hydro Board Chair and CEO. We are also meeting with the BC Water Comptroller to fully understand the governance of the water licenses for BC Hydro’s facilities. We will explore alternatives if these approaches are not successful.

In September Dudley Coulter was hired to fill the only regionally located community relations staff person for BC Hydro. Dudley is located in Castlegar and is responsible for the East Kootenays; Arrow Lakes and Duncan reservoirs; and the Columbia River below Hugh Keenleyside dam. You are encouraged to direct your questions and those from constituents in this area to Dudley at: [dudley.coulter@bchydro.com](mailto:dudley.coulter@bchydro.com) (250) 608-3750. The attached contact list has been updated by BC Hydro as the resource for basin local governments and the public to use to have their questions addressed. We encourage you to share this list with your constituents outside of the areas listed above.

We appreciate that BC Hydro has committed to returning to open houses for their annual operations updates this year for communities that prefer in-person engagement. This is in addition to hosting virtual updates. These updates are scheduled in late May into June. Please watch for notification of these sessions and encourage your constituents to attend. For those who do attend, we hope they will provide feedback on whether these sessions provide the information they need.

BC Hydro is also working with the BC CRT Team on videos to describe regional hydro operations. We look forward to reviewing the storyboards and draft videos, along with CBRAC (see below). We appreciate the BC CRT Team taking leadership to develop these videos and we hope they will fill in the current gaps in information about regional operations.

You are encouraged to sign up for weekly updates on Arrow, Duncan and Kinbasket reservoirs, and Kootenay Lake, as well as notifications of river flow changes below Hugh Keenleyside dam by contacting Dudley at the contact information above.

- **Integrating socio-economic interests in CRT scenarios** – The Committee’s Socio-Economic Integration Team continues to work to ensure social and economic interests for the Kootenay and Columbia rivers are being included in the confidential river management scenario modelling for CRT modernization. Although there is a pause in treaty modernization, the province and the First Nations involved in the CRT negotiations continue to lead this work in preparation for when treaty modernization restarts.

Socio-economic interests that are impacted by reservoir levels and river flows, such as flood risk management, navigation, recreation, tourism, dust generation and others are very important to communities. Performance measures describing the required and preferred reservoir elevations and flow levels for these interests continue to be refined as new information becomes available. These measures are being used by the Team to evaluate alternative hydro operations scenarios to inform the selection of operations to implement the new Canadian flexibility when the treaty is modernized. Other groups are working on performance measures for ecosystem function (learn more [here](#)), which are also very important to Basin residents, Indigenous cultural values and power generation.

We are also involved in the development of an Adaptive Management Plan to monitor and respond to new information when the Canadian flexibility is implemented through a modernized treaty.

The Committee is very grateful to be included in this process as this signals the recognition of the value of local government contributions in CRT-related matters. The Committee is grateful for the funding from the Province for this initiative. For more detailed information see the [Committee's website](#).

- **Modernized domestic CRT governance** – The three First Nations involved in the CRT modernization – the Ktunaxa, Syilx Okanagan and Secwepemc Nations – and B.C. are developing a framework for modernized Canadian domestic CRT governance. This initiative recognizes both the role of First Nations in the context of UNDRIP and how Basin communities could have a voice in future decisions regarding aspects of Treaty operations planning.

The Committee has been prepared to engage in this critically important initiative for some time. The Committee will be reaching out to local governments across the Basin once more information is available. The BC CRT Team has committed to providing Basin communities and residents an opportunity for input on potential governance models before decisions are reached.

- **Columbia Basin Regional Advisory Committee (CBRAC)** – CBRAC includes public members who represent the geography and interests across the basin (selected based on their expressions of interest) and appointed members from local governments, First Nations and basin hydro operators. For a number of reasons there have been no CBRAC activities over the past year. In early April CBRAC participated in a webinar on the CRT Flood Risk Operating Plan, with updates from the Negotiating Team, the BC CRT Team and the Committee. Webinars are also being planned on BC Hydro's [Integrated Resource Plan](#) and their annual operations, as well on as Indigenous law. The CBRAC terms of reference, membership and meeting summaries as well as presentations and reports discussed at these meetings are available on the [CBRAC webpage](#).

I encourage you to stay informed about CRT modernization by visiting the [CRT engagement website](#) and signing up for the [CRT e-letter](#). This site will continue to be the source of accurate, updated information on CRT modernization. You can also learn more about the Committee at our [website](#).

### Committee Members

RDKB - Linda Worley, LGC Chair, Rural Director, and Warfield Mayor Frank Marino

RDEK - Stan Doehle, LGC Vice Chair and Rural Director; and Thomas McDonald, Rural Director

RDCK – Aimee Watson, Rural Director and RDCK Board Chair; and Aidan MacLaren-Caux, Nakusp Councilor

CSRD – David Brooks-Hill, Rural Director and Golden Mayor Ron Oszust

Village of Valemount – Donnie MacLean, Councilor

AKBLG – Keith Page, Nelson Councilor and appointed by the AKBLG



## OMBUDSPERSON BRITISH COLUMBIA

The *Ombudsperson Act* requires that investigations be conducted in private. Ombudsperson investigation documents are not available through the *Freedom of Information and Protection of Privacy Act* and may be subject to rules preventing their use in court and tribunal proceedings. **Please contact the Office of the Ombudsperson before disclosing this document, or any responses, to any third parties.**

March 31, 2026

Robert Gay  
Chair  
Regional District of East Kootenay  
19-24th Ave. South  
CRANBROOK BC V1C3H8

RECEIVED

APR 21 2026

Regional District of  
East Kootenay

Dear Robert Gay:

**Re: Office of the Ombudsperson Quarterly Report for the period covering  
October 1 - December 31, 2025**

This package of documents details the complaint files the Office of the Ombudsperson closed for Regional District of East Kootenay between October 1 and December 31, 2025. Though no action is required on your part, we hope that you will find this information useful and share it within your organization.

These reports provide information about the complaint files we closed regarding your organization within the last quarter, including both files we investigated and files we closed without investigation. Files currently open with the office are not included in these reports.

If you would like further information about the complaints our office received about your organization, or you have identified inaccuracies in the data, please contact our office's Policy, Research and Continuous Improvement team. They can provide further details upon request and can be reached at [PRCI@bcombudsperson.ca](mailto:PRCI@bcombudsperson.ca) or by phone at 250-953-4171.

Enclosed you will find detailed reports containing the following:

- A one-page report listing the number of files closed and the category under which they were closed. The categories we use to close files are based on the sections of the *Ombudsperson Act*, which gives the Ombudsperson the authority to investigate complaints from the public regarding authorities under our jurisdiction. A more detailed description of our closing categories is available on our website at: <https://bcombudsperson.ca/assets/media/QR-Glossary.pdf>.

Mailing address: PO Box 9039 Stn Prov Govt • Victoria BC V8W 9A5

Phone in Victoria: 250-387-5855 • Toll-Free: 1-800-567-3247 • Fax: 250-387-0198 • [bcombudsperson.ca](http://bcombudsperson.ca)



**OMBUDSPERSON**  
BRITISH COLUMBIA

- If applicable: Copies of closing summaries written about the complaint files we investigated. These summaries provide an overview of the complaint received, our investigation and the outcome. Our office produces closing summaries for investigated files only, and not for enquiries or those complaints we chose not to investigate.
- If applicable: A summary of the topics identified in the complaint files closed during the quarter. We track general complaint topics for all complaints we receive, and when applicable, we include authority-specific and/or sector-specific topics for your organization and/or sector. Our office tracks the topics of complaints we investigate and those we close without investigation, but not for enquiries. Because complaints to our office are confidential, we do not share complaint topic information if we received too few complaints to preserve the complainants' anonymity.

If you wish to update your organization's contact information, please contact us by email at [info@bcombudsperson.ca](mailto:info@bcombudsperson.ca).

To learn more about educational opportunities on administrative fairness provided by our office, or if you wish to consult with our office to enhance fairness within your organization's policies or procedures, our Public Authority Consultation and Training (PACT) Team can assist you. Please contact them by phone at 250-508-2950 or by email at [consult@bcombudsperson.ca](mailto:consult@bcombudsperson.ca).

Yours sincerely,

Sandy Hermiston  
Ombudsperson  
Province of British Columbia

Enclosures



# OMBUDSPERSON BRITISH COLUMBIA

Quarterly Report for 1 October - 31 December, 2025  
Regional District of East Kootenay

Type of complaint closure for Authority: Regional District of East Kootenay	# closed
<b>Enquiries</b> – Many people who contact us are not calling to make a complaint, but are seeking information or advice. These contacts are classified as <i>Enquiries</i> to distinguish them from <i>Complaints</i> , which are requests that our office conduct an investigation.	0
<b>Complaints with No Investigation</b> – Our office does not investigate every complaint it receives. First, we determine whether we have authority to investigate the complaint under the <i>Ombudsperson Act</i> . We also have discretion to decline to investigate for other reasons specified in the <i>Ombudsperson Act</i> .	3
<b>Early Resolution Investigations</b> – Early Resolution investigations provide an expedited process for dealing with complaints when it appears that an opportunity exists for the authority to take immediate action to resolve the issue. Typical issues that are addressed through Early Resolution include timeliness, communication, and opportunities for internal review.	0
<b>Complaint Investigations</b> – When we investigate a complaint we may conclude with a determination that a complaint is not substantiated, or with a negotiated settlement of the complaint, or with public findings and recommendations. We may also exercise discretion to cease investigation for a number of other reasons specified in the <i>Ombudsperson Act</i> .	0
<b>Reason for closing an Investigation</b>	
Pre-empted by existing statutory right of appeal, objection or review.	0
Investigation ceased with no formal findings under the <i>Ombudsperson Act</i> .	
More than one year between event and complaint	0
Insufficient personal interest	0
Available remedy	0
Frivolous/vexatious/trivial matter	0

Mailing address: PO Box 9039 Stn Prov Govt • Victoria BC V8W 9A5

Phone in Victoria: 250-387-5855 • Toll-Free: 1-800-567-3247 • Fax: 250-387-0198 • [bcombudsperson.ca](http://bcombudsperson.ca)



**OMBUDSPERSON  
BRITISH COLUMBIA**

Can consider without further investigation	0
No benefit to complainant or person aggrieved	0
Complaint abandoned	0
Complaint withdrawn	0
<b>Complaint settled in consultation with the authority –</b> When an investigation leads us to conclude that action is required to resolve the complaint, we try to achieve that resolution by obtaining the voluntary agreement of the authority to settle the complaint. This allows matters to be resolved fairly for the complainant and authority without requiring a formal finding of maladministration.	0
Complaint substantiated with formal findings under the <i>Ombudsperson Act</i> .	0
Complaint not substantiated under the <i>Ombudsperson Act</i> .	0
<b>Ombudsperson Initiated Investigations –</b> The Ombudsperson has the authority to initiate investigations independently from our process for responding to complaints from the public. These investigations may be ceased at the discretion of the Ombudsperson or concluded with formal findings and recommendations.	0



# OMBUDSPERSON BRITISH COLUMBIA

Complaints Closed from 1 October - 31 December, 2025  
Regional District of East Kootenay

*The tables below summarize the complaint topics we are tracking for your sector and/or authority and the number of times this topic was identified in the files (investigated and non-investigated complaints) that were closed in the most recent quarter.*

If you would like more information on the types of complaints we receive, please contact our Public Authority Consultation and Training Team: email us at [consult@bcombudsperson.ca](mailto:consult@bcombudsperson.ca) or call us at 250-508-2950.

## Sector-Specific Complaint Topics – All Local Government

Business Licensing	4	2%
Bylaw Enforcement	62	31%
Council Member Conduct (incl. Conflict of Interest)	13	6%
Fees/Charges (incl. Taxes)	15	7%
Official Community Plan/Zoning/Development	51	25%
Open Meetings	9	4%
Other	28	14%
Procurement	2	1%
Response to Damages Claim	3	1%
Services (incl. Garbage, Sewer, Water)	13	6%
Utilities	1	0%

## General Complaint Topics – All Local Government

Accessibility	13	4%
Administrative Error	9	3%
Communication	44	15%
Delay	17	6%
Disagreement with Decision or Outcome	106	36%



**OMBUDSPERSON  
BRITISH COLUMBIA**

Discrimination	3	1%
Employment or Labour Relations	1	0%
Other	8	3%
Process or Procedure	67	23%
Review or Appeal Process	5	2%
Treatment by Staff	21	7%

**REGIONAL DISTRICT OF EAST KOOTENAY**

**BYLAW NO. 3463**

A bylaw to amend Bylaw No. 1278

---

WHEREAS Bylaw No. 1278 sets regulations and fees for the disposal of solid and liquid wastes within the Columbia Valley Subregion;

AND WHEREAS the Board wishes to amend the provisions of Bylaw No. 1278;

NOW THEREFORE, the Board of the Regional District of East Kootenay enacts as follows:

1. This Bylaw may be cited as “Regional District of East Kootenay – Columbia Valley Subregion Waste Management Regulatory Bylaw No. 1278, 1996 – Amendment Bylaw No. 12, 2026.”
2. That the following definition be repealed and replaced with:  
  
“**Columbia Valley Subregion** means Electoral Areas F and G including the District of Invermere, Village of Radium Hot Springs and Village of Canal Flats.”
3. Schedule A of Bylaw No. 1278 is hereby repealed and replaced with Schedule A attached to and forming part of this Bylaw.

READ A FIRST TIME the day of      , 2026.

READ A SECOND TIME the day of      , 2026.

READ A THIRD TIME the day of      , 2026.

ADOPTED the day of      , 2026.

---

CHAIR

---

CORPORATE OFFICER

**SCHEDULE A TO BYLAW NO. 3463**

**REGIONAL DISTRICT OF EAST KOOTENAY  
TIPPING FEE SCHEDULE FOR SOLID WASTES**

1. The following fees shall be charged for solid wastes delivered to the Columbia Valley Subregional Landfill Site.

**a) SOLID WASTE (Commercial & Domestic Refuse) excluding Controlled Waste**

i) Municipal Solid Waste (regular household garbage) NO CHARGE

**b) CONTROLLED WASTE (Including Industrial Refuse)**

- i) Animal carcasses - livestock or big game \$25.00 each
- ii) Asbestos, dry or slurry \$100.00 per tonne
- iii) Biomedical Waste - treated only \$160.00 per load
- iv) Construction/Demolition Waste – Mixed \$200.00 per tonne
- v) Construction/Demolition Waste - originating from the clean-up of waste illegally left on public land (where metal and clean wood waste has been sorted for diversion from the Landfill, to the extent determined by the Manager) NO CHARGE
- vi) Construction/Demolition Waste - originating from lands owned by member municipalities and the RDEK within the service area, where divertible materials have been sorted for diversion, to the extent determined by the Manager \$100.00 per tonne
- vii) Food Processing Waste \$60.00 per tonne
- viii) Land Clearing Waste \$40.00 per tonne
- ix) Mattresses or Box Springs NO CHARGE
- x) Soil - contaminated (not classified as special waste) \$100.00 per tonne
- xi) Soil - not contaminated NO CHARGE
- xii) Steel Cables - must be on spool or cut to 1.2m lengths \$60.00 per tonne

**c) RECYCLABLE MATERIALS**

- i) Asphalt - not contaminated \$40.00 per tonne
- ii) Asphalt Shingles (at designated Asphalt Shingle areas only) NO CHARGE
- iii) Auto Batteries NO CHARGE
- iv) Auto Hulk - including pick up trucks & vans \$30.00 per unit
- v) Chipped Green Wood Waste NO CHARGE
- vi) Clean Wood Waste NO CHARGE
- vii) Concrete - not contaminated \$40.00 per tonne
- viii) Mobile Home Hulk \$30.00 per unit
- ix) Propane Cylinders - under 100 lbs. NO CHARGE
- x) Scrap Metal - excluding white goods NO CHARGE
- xi) Tires: 1) 17" or smaller \$8.00 per tire  
 2) 17" or smaller with rim \$14.00 per tire  
 3) 18" - 25" \$50.00 per tire  
 4) 18" - 25" with rim \$56.00 per tire  
 5) larger than 25" NOT ACCEPTED
- xii) Truck or Bus Hulk \$30.00 per unit
- xiii) White Goods - major appliances NO CHARGE
- xiv) White Goods - requiring freon removal NO CHARGE
- xv) Yard or Garden Waste - under 6" diameter NO CHARGE

**d) CHARGES APPLICABLE TO ALL CATEGORIES**

- i) Loads containing banned recyclable materials minimum \$100.00 or **DOUBLE CHARGE**
- ii) Uncovered or Unsecured Loads (see Schedule C) minimum \$ 25.00 or **DOUBLE CHARGE**

2. These fees may also be imposed at any other Disposal Site established by the Regional Board.

3. All fees payable under this Bylaw must be paid prior to the deposit of the Solid Waste for which the fee is charged unless a credit account has been established with the RDEK.

4. The person paying a fee under this Bylaw shall obtain a receipt for such payment and shall produce such receipt for inspection on request of a person employed for that purpose at a Disposal Site as a condition of depositing Solid Waste at a Disposal Site.

5. There is no minimum general per unit charge on items subject to fees.

This is Schedule A referred to in Bylaw No. 3463 cited as "Regional District of East Kootenay - Columbia Valley Subregion Waste Management Regulatory Bylaw No. 1278, 1996 - Amendment Bylaw No. 12, 2026.

\_\_\_\_\_  
Chair Corporate Officer

\_\_\_\_\_  
Date

**REGIONAL DISTRICT OF EAST KOOTENAY**

**BYLAW NO. 3464**

A bylaw to amend Bylaw No. 1573

---

WHEREAS Bylaw No. 1573 sets regulations and fees for the disposal of solid wastes within the Elk Valley Subregion;

AND WHEREAS the Board wishes to amend the provisions of Bylaw No. 1573;

NOW THEREFORE, the Board of the Regional District of East Kootenay, enacts as follows:

1. This Bylaw may be cited as “Regional District of East Kootenay – Elk Valley Subregion Waste Management Regulatory Bylaw No. 1573, 2001 - Amendment Bylaw No. 8, 2026.”
2. Schedule A of Bylaw No. 1573 is hereby repealed and replaced by Schedule A attached to and forming part of this Bylaw.

READ A FIRST TIME the            day of            , 2026.

READ A SECOND TIME the            day of            , 2026.

READ A THIRD TIME the            day of            , 2026.

ADOPTED the            day of            , 2026.

---

CHAIR

---

CORPORATE OFFICER

**SCHEDULE A TO BYLAW NO. 3464  
REGIONAL DISTRICT OF EAST KOOTENAY  
TIPPING FEE SCHEDULE FOR SOLID WASTES**

1. The following fees shall be charged for solid wastes delivered to the Elk Valley Disposal Sites.
2. These fees may also be imposed at any other Disposal Site established by the Regional Board.
3. All fees payable under this Bylaw must be paid prior to the deposit of the Solid Waste for which the fee is charged unless a credit account has been established with the RDEK.
4. The person paying a fee under this Bylaw shall obtain a receipt for such payment and shall produce such receipt for inspection on request of a person employed for that purpose at a Disposal Site as a condition of depositing Solid Waste at a Disposal Site.
5. There is no minimum general per unit charge on items subject to fees.

**SOLID WASTE (Commercial & Domestic Refuse) excluding Controlled Waste**

Municipal Solid Waste (regular household garbage) NO CHARGE

**CONTROLLED WASTE (Including Industrial Refuse)**

Animal carcasses - livestock or big game	\$25.00 each
Asbestos, dry or slurry	\$100.00 per tonne
Biomedical Waste - treated only	\$160.00 per load
Construction/Demolition Waste - mixed	\$200.00 per tonne
Construction/Demolition Waste - originating from the clean-up of waste illegally left on public land (where metal and clean wood waste has been sorted for diversion from the Landfill, to the extent determined by the Manager)	NO CHARGE
Construction/Demolition Waste - originating from lands owned by member municipalities and the RDEK within the service area, where divertible materials have been sorted for diversion, to the extent determined by the Manager.	\$100.00 per tonne
Food Processing Waste	\$60.00 per tonne
Land Clearing Waste	\$40.00 per tonne
Mattresses or Box Springs	NO CHARGE
Septic Sludge - where applicable	\$10.00 per tonne
Soil - contaminated (not classified as special waste)	\$100.00 per tonne
Soil - not contaminated	\$40.00 per tonne
Steel Cables - must be on spool or cut to 1.2m lengths	\$60.00 per tonne

**RECYCLABLE MATERIALS**

Asphalt - not contaminated	\$40.00 per tonne
Asphalt Shingles (at designated Asphalt Shingle areas only)	NO CHARGE
Auto Batteries	NO CHARGE
Auto Hulk - including pick up trucks & vans - accepted at Sparwood Transfer Station only	\$30.00 per unit
Chipped Green Wood Waste	NO CHARGE
Clean Wood Waste	NO CHARGE
Concrete - not contaminated	\$40.00 per tonne
Mobile Home Hulk - accepted at Sparwood Transfer Station only	\$30.00 per unit
Propane Cylinders - under 100 lbs.	NO CHARGE
Scrap Metal - excluding white goods	NO CHARGE
Tires:	
i) 17" or smaller	\$8.00 per tire
ii) 17" or smaller with rim	\$14.00 per tire
iii) 18" - 25"	\$50.00 per tire
iv) 18" - 25" with rim	\$56.00 per tire
v) larger than 25"	NOT ACCEPTED
Truck or Bus Hulk - accepted at Sparwood Transfer Station only	\$30.00 per unit
White Goods - major appliances	NO CHARGE
White Goods - requiring freon removal	NO CHARGE
Yard or Garden Waste - under 6" diameter	NO CHARGE

**CHARGES APPLICABLE TO ALL CATEGORIES**

Loads containing banned recyclable materials	minimum \$100.00 or <b>DOUBLE CHARGE</b>
Uncovered or Unsecured Loads (see Schedule C)	minimum \$ 25.00 or <b>DOUBLE CHARGE</b>

This is Schedule A referred to in Bylaw No. 3464 cited as "Regional District of East Kootenay – Elk Valley Subregion Waste Management Regulatory Bylaw No. 1573, 2001 - Amendment Bylaw No. 8, 2026".

\_\_\_\_\_  
Chair Corporate Officer

\_\_\_\_\_  
Date Page 36 of 58

**REGIONAL DISTRICT OF EAST KOOTENAY**

**BYLAW NO. 3465**

A bylaw to amend Bylaw No. 2844

---

WHEREAS Bylaw No. 2844 is necessary to regulate and set fees for the use of the Eddie Mountain Memorial Arena;

AND WHEREAS the Board of the Regional District of East Kootenay wishes to amend the fee schedule of Bylaw No. 2844;

NOW THEREFORE, the Board of the Regional District of East Kootenay, enacts as follows:

1. This Bylaw may be cited as “Regional District of East Kootenay – Eddie Mountain Memorial Arena Regulation and Fee Bylaw No. 2844, 2018 – Amendment Bylaw No. 8, 2026.”
2. Schedule A of Bylaw No. 2844 is hereby repealed and replaced with Schedule A attached to and forming part of this Bylaw.

READ A FIRST TIME the    day of    , 2026.

READ A SECOND TIME the    day of    , 2026.

READ A THIRD TIME the    day of    , 2026.

ADOPTED the    day of    , 2026.

---

CHAIR

---

CORPORATE OFFICER

**SCHEDULE A**  
**BYLAW NO. 3465**  
**FEES**  
**Eddie Mountain Memorial Arena**

**1. FEES**

1.1 The following Fees shall apply for the use of the Facility, inclusive of GST:

(a) General Admission (Public Skate)

Drop in - Individual	\$5/person
Drop in - Family (immediate family living in one household)	\$15/family
Children 6 and under	Free
Registered Minor Hockey or Figure Skating Club Member	Free
Season Pass - Individual	\$65/season
Season Pass - Family (immediate family living in one household)	\$130/season

(b) Ice Rental – Registered User Groups (Over 50 hours booked in a calendar year)

Youth Registered Groups – Minor Hockey, Figure Skating	\$93/hour
Youth Registered Groups – Junior Hockey	\$95/hour
Adult’s Registered Groups	\$146/hour
Senior Groups	\$107/hour
Statutory Holidays	25% increase over hourly rate

(c) Ice Rental – Registered User Groups Tournament, Game, and Event Rates (Over 50 hours booked in a calendar year)

Youth Registered Groups	\$105/hour
Youth Registered Groups – Minor Hockey, Figure Skating	\$105/hour
Youth Registered Groups - Junior Hockey	\$110/hour
Adult’s Registered Groups	\$146/hour
Senior Groups	\$107/hour
Statutory Holidays	25% increase over hourly rate

(d) Ice Rental – Groups (Under 50 hours booked in a calendar year)

Youth (July to August)	\$120/hour
Youth (September to April)	\$120/hour
Youth Hockey Camp (July to August)	\$130/hour
Adult (July to August)	\$140/hour
Adult (September to April)	\$165/hour
Statutory Holidays	25% increase over hourly rate

(e) Ice Rental – Tournament Rates (Under 50 hours booked in a calendar year)

Youth	\$165/hour
Adult	\$165/hour
Hockey Schools (Monday to Friday from 8:00 am to 6:00 pm)	\$6,800/week
School Groups	\$70/hour
Statutory Holidays	25% increase over hourly rate

(f) Mezzanine Room Rental

Birthday Parties and Meetings	\$45/day - up to 4 hours \$90/day - over 4 hours
For Profit Events and Beer Gardens	\$100/day
Combined with Ice Rental under Section 1.1(b) above	Free provided room is cleaned by Approved Registered Applicant

(g) Dry Floor Rental

Adult	\$155/hour
Youth	\$85/hour
Non-Profit Events and Commercial Events	\$180/hour

(h) Other

Advertising Rights – Boards and Commercial Signage	\$2,750/year
Concession Rental	\$350/month

- 1.2 For any activity in which user groups are comprised of a combination of youth, adults or seniors, the adult Fee shall apply.
- 1.3 Hockey Camp is defined as (2) or more consecutive hours of instructional ice.
- 1.4 Additional charges, at cost plus twenty percent (20%) administration, will be charged for:
  - (a) services not provided as part of the approved Use of Space Application; and
  - (b) any damages caused by mischief, vandalism or by accident.

**2. PAYMENT OF FEES**

- 2.1 All fees are due prior to Facility use unless specified.
- 2.2 For Facility uses identified in Section 1.1(b) of this Schedule, Fees will be invoiced monthly for Facility use. The Approved Applicant is responsible for all Fees if an activity or event is cancelled by the Approved Applicant:
  - (a) less than 7 days prior to the Facility booking; or
  - (b) for a tournament, less than 30 days prior to the Facility booking.
- 2.3 For Facility uses identified in Sections 1.1(d) of this Schedule, the full amount must be paid at the time of submitting a Use of Space Application. Failure to pay the required Fees will result in cancellation of the approved Use of Space Application.
- 2.4 For Facility uses identified in Sections 1.1(c), (e), (f), and (g) of this Schedule, Fees are due upon approval of Use of Space Application.
- 2.5 Refunds of Fees will be given if programs are cancelled by the RDEK or by the Approved Applicant if the Approved Applicant provides:
  - (a) a minimum of 7 days notice; or
  - (b) for a tournament, a minimum of 30 days notice.

Refunds are prorated based on the service rendered to date.

**3. DAMAGE DEPOSIT**

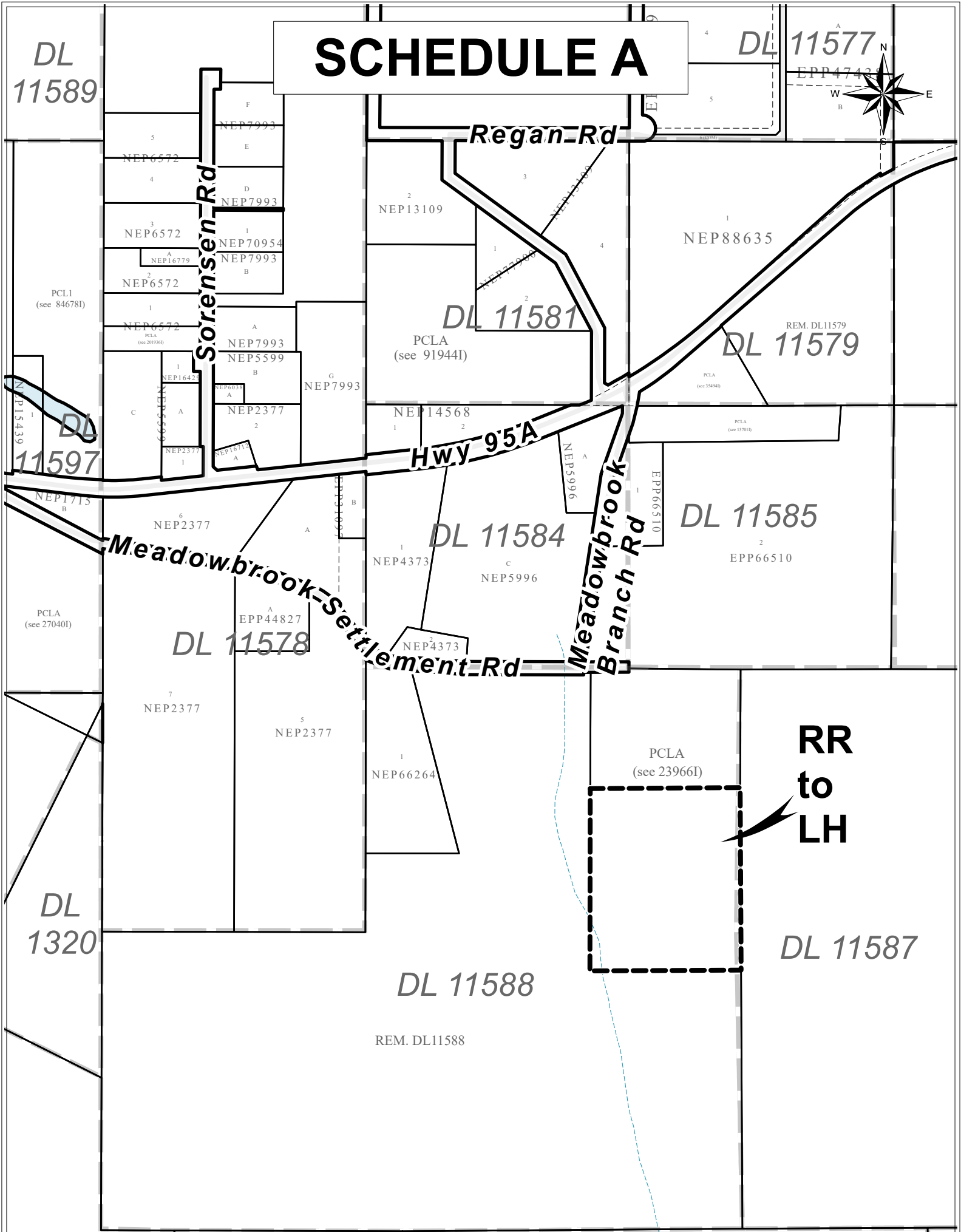
- 3.1 A damage deposit of \$200.00 per day of the activity or event may be required. The damage deposit must be paid at least two weeks prior to the date of commencement of the activity or event. The damage deposit will be refunded provided the conditions set out in the approved Use of Space Application and all other conditions under this Bylaw or as imposed by the Manager, are met. In the event those conditions are not met to the satisfaction of the Manager, the damage deposit will be retained to cover costs.
- 3.2 For concession operation, a damage deposit of \$500.00 per season must be paid at least two weeks prior to the date of commencement of the season. The damage deposit will be refunded provided the conditions set out in the operation agreement and all other conditions under this Bylaw or as imposed by the Manager, are met. In the event those conditions are not met to the satisfaction of the Manager, the damage deposit will be retained to cover costs.
- 3.3 In the event that the costs incurred by the RDEK for clean-up or damage repair exceed the amount of the damage deposit, the Approved Applicant shall be responsible to pay the full costs plus 25 per cent (25%).
- 3.4 The damage deposit may be used by the RDEK to hire security if the need arises.

This is Schedule A referred to in Bylaw No. 3465 cited as "Regional District of East Kootenay - Eddie Mountain Memorial Arena Regulation and Fee Bylaw No. 2844, 2018 - Amendment Bylaw No. 8, 2026."

\_\_\_\_\_  
Chair Corporate Officer



# SCHEDULE A



This is Schedule A referred to in Bylaw No. 3446 cited as "Regional District of East Kootenay – Kimberley Rural Official Community Plan Bylaw No. 2760, 2017 – Amendment Bylaw No. 8, 2025 (Meadowbrook / Redding)."

\_\_\_\_\_  
Chair

\_\_\_\_\_  
Corporate Officer

\_\_\_\_\_  
Date



## **Request for Decision Bylaw Amendment Application**

File No: P 725 431  
Reference: Bylaw Nos. 3446 & 3447  
Date: February 23, 2026

**Subject:** Bylaw No. 3446 & Bylaw No. 3447 (Meadowbrook / Redding)  
**Applicant:** Ginnesa and Kevin Redding  
**Agent:** Jean Terpsma, Terpsma Land Development Consulting  
**Location:** 1832 Meadowbrook Settlement Road, Meadowbrook  
**Legal:** District Lot 11588 Kootenay District except (1) Parcel A (see 23966i) and (2) parts included in Plans 4373, 5996 and NEP66264 (PID: 011-445-114)

**Proposal:** The applicant is proposing to amend the OCP and zone designations of a 6 ha portion of the subject property to facilitate subdivision of three 2 ha parcels and leave a large remainder.

**Development Agreement:** None.

**Options:**

1. THAT Bylaw No. 3446 cited as "Regional District of East Kootenay – Kimberley Rural Official Community Plan Bylaw No. 2760, 2017 – Amendment Bylaw No. 8, 2025 (Meadowbrook / Redding)" be introduced; and further, that the Board is satisfied that the OCP consultation identified in the staff report is appropriate.
2. THAT Bylaw No. 3447 cited as "Regional District of East Kootenay – Electoral Area E Zoning and Floodplain Management Bylaw No. 2502, 2014 – Amendment Bylaw No. 50, 2025 (Meadowbrook / Redding)" be introduced.
3. THAT Bylaw No. 3446 cited as "Regional District of East Kootenay – Kimberley Rural Official Community Plan Bylaw No. 2760, 2017 – Amendment Bylaw No. 8, 2025 (Meadowbrook / Redding)" not proceed.
4. THAT Bylaw No. 3447 cited as "Regional District of East Kootenay – Electoral Area E Zoning and Floodplain Management Bylaw No. 2502, 2014 – Amendment Bylaw No. 50, 2025 (Meadowbrook / Redding)" not proceed.

**Recommendation:** **Option 3 & 4**

The OCP process contemplated where support for Large Holding size parcels should be supported. The OCP policies support the retention of parcels designated as Rural Resource to support recreation, resource extraction and agriculture. Rural Resource designated parcels are not supported for further subdivision.

**Property  
Information:**

**Current OCP Designation:** RR, Rural Resource which supports agricultural, rural residential and rural resource land uses with parcel sizes 8.0 ha and larger. The RR designation also recognizes the use of these lands for public utility use, resource extraction, green space and recreation.

**Proposed OCP Designation:** RR, Rural Resource which supports agricultural, rural residential and rural resource land uses with parcel sizes 8.0 ha and larger. The RR designation also recognizes the use of these lands for public utility use, resource extraction, green space and recreation; and LH, Large Holdings which supports rural residential development and rural resource land uses with parcel sides in the range of 2.0 ha to 8.0 ha.

**OCP Background:**

During the OCP consultation process, residents of Meadowbrook generally expressed concern regarding compatibility of future development with surrounding agricultural uses and existing parcel sizes.

Even though there was development potential within the Meadowbrook area, the designations of numerous parcels were pre-designated and amended from RR, Rural Resource to LH, Large Holdings. The intention of amending these designations was to allow for the development of some medium to large sized lots in character with surrounding parcels.

**OCP Policies:**

- RR, Rural Resource designated lands are intended to be retained for low density land uses such as recreation, resource extraction, and agriculture.
- Bylaw amendment applications for residential development should address the following:
  - Compatibility of the proposed development with surrounding land uses and parcel sizes;
  - Access to the development and proposed road networks;
  - Integration of Conservation Subdivision Design principles by utilizing a compact neighbourhood design and identifying and protecting wetlands, steep slopes, woodlands and wildlife corridors;
  - Capability of the natural environment to support the proposed development, and its impact on important habitat areas;
  - Identification of trail connectivity within the area under application and adjacent developments;
  - Consideration of water reduction measures for buildings and landscapes;
  - Consideration of the potential impacts on groundwater;
  - Susceptibility to natural hazards including but not limited to flooding, slope instability or wildfire risk;
  - Suitability of the parcels for on-site groundwater wells and septic systems; and
  - Consideration of vegetated buffers or setbacks where the proposed development is adjacent to agricultural land.

**Property Information cont'd:**

- Rezoning applications of parcels designated LH, Large Holdings to permit parcel sizes 2 ha or greater will generally be supported. The application should address the criteria in section 4.3(1)(g) (as identified above).
- Rezoning applications to allow for subdivision should provide provisions to address the impact the development may have on existing agricultural operations.

**Current Zone Designation:** RR-60, Rural Resource Zone (minimum parcel size: 60 ha)

**Proposed Zone Designation:** Multiple - RR-60, Rural Resource Zone (minimum parcel size: 60 ha) and RR-2, Rural Residential (Small Holding) Zone (minimum parcel size: 2 ha)

**Parcel Size:** 58.6 ha (145 ac)

Area under application: 6 ha (15 ac)

**Density:**

Existing: One single family dwelling. The parcel is not large enough to be subdivided under the current zoning.

Proposed: Four residential parcels and one common lot for access:

- Proposed Lots 1-3: 2 ha
- Proposed Remainder: 52.7 ha
- Proposed Access Lot: Approximately 0.7 ha

One single family dwelling and one secondary suite is permitted per proposed parcel.

**ALR Status:** Not within the ALR.

**Interface Fire Hazard Rating:** Moderate to high, not within a fire protection area.

**BC Assessment:** Residential (SFD)

**Water and Sewer Services:** Individual onsite well and sewage disposal system proposed for each parcel.

**Flood Hazard Rating:** n/a

**Professional Studies:**

None

**Additional Information:**

- The application states that the owners wish to subdivide the three parcels to provide a parcel for each of their three children.
- The proposed remainder has an existing house and outbuildings.
- The application states that access to the three new parcels is intended to be by a fee simple common lot for access. The zoning bylaw permits a reduction in parcel area requirements for a common lot used for access.

- The application states that the existing well on the property produces 10 gallons per minute. Water quantity and quality for the three proposed parcels will be proven during the subdivision process. Information from the Provincial Groundwater Database is provided for wells located near the subject property. It is also stated that the proposed 2 ha parcel sizes provides ample space for a groundwater well and onsite sewage disposal system to be supported.
- The application states that there are no natural hazards on site and the proposed parcels avoid an area that is seasonally wetter than the higher elevation areas of the property. The parcels are also located where they will not impact neighbouring views.
- The application also states that the vacant neighbouring parcel to the east is the only adjacent agricultural property and there are treed areas on each proposed parcel for buffering.

**Consultation:**

Section 475 of the *Local Government Act* requires that local government consider the depth and breadth of consultation to be undertaken with persons or organizations that it considers may be affected by the proposed OCP amendment. Consultation completed to date for this amendment includes referral of the bylaw to the following organizations. In addition, there will be opportunity for discussion with the public prior to the commencement of the public hearing.

**APC Area E:** Support recommended.

**Referral Agencies:**

- **Interior Health Authority:** No objections
- **Transportation & Transit:** The proposed common lot access will be addressed by the Ministry of Transportation and Transit at the time of subdivision. Common lot access roads must be designed and constructed in accordance with good engineering practices.
- **Water, Land and Resource Stewardship:** No response
- **Ktunaxa Nation Council:** No response
- **School District No. 6:** No response
- **Telus:** No issue
- **City of Kimberley:** A wildfire hazard assessment report prepared and certified by a qualified professional and completion of mitigation work to reduce hazard rating is recommended prior to subdivision.

**Documents  
Attached:**

- Bylaws
- Location Map
- Land Use Map
- OCP Designation Map

- Zone Designation Map
- Proposal
- Aerial Photo

**RDEK**  
**Contact:**

Krista Gilbert, Planning Technician  
Phone: 250-489-0314  
Email: [kgilbert@rdek.bc.ca](mailto:kgilbert@rdek.bc.ca)

**REGIONAL DISTRICT OF EAST KOOTENAY**

**BYLAW NO. 3447**

A bylaw to amend Bylaw No. 2502 cited as "Regional District of East Kootenay – Electoral Area E Zoning and Floodplain Management Bylaw No. 2502, 2014."

---

WHEREAS the Board of the Regional District of East Kootenay has received an application to amend Bylaw No. 2502;

AND WHEREAS the Board deems it desirable to make this amendment as aforementioned;

NOW THEREFORE, the Board of the Regional District of East Kootenay in open meeting assembled, enacts as follows:

1. This Bylaw may be cited as "Regional District of East Kootenay – Electoral Area E Zoning and Floodplain Management Bylaw No. 2502, 2014 – Amendment Bylaw No. 50, 2025 (Meadowbrook / Redding)."
2. The designation of District Lot 11588 Kootenay District except (1) Parcel A (see 23966i) and (2) parts included in Plans 4373, 5996 and NEP66264, outlined on the attached Schedule A, which is incorporated in and forms part of the Bylaw, is amended from RR-60, Rural Resource Zone to RR-2, Rural Residential (Small Holding) Zone.

READ A FIRST TIME the 13<sup>th</sup> day of March, 2026.

READ A SECOND TIME the 13<sup>th</sup> day of March, 2026.

READ A THIRD TIME the 10<sup>th</sup> day of April, 2026.

APPROVED by the Ministry of Transportation and Transit the 21 day of April, 2026.

Signature: 

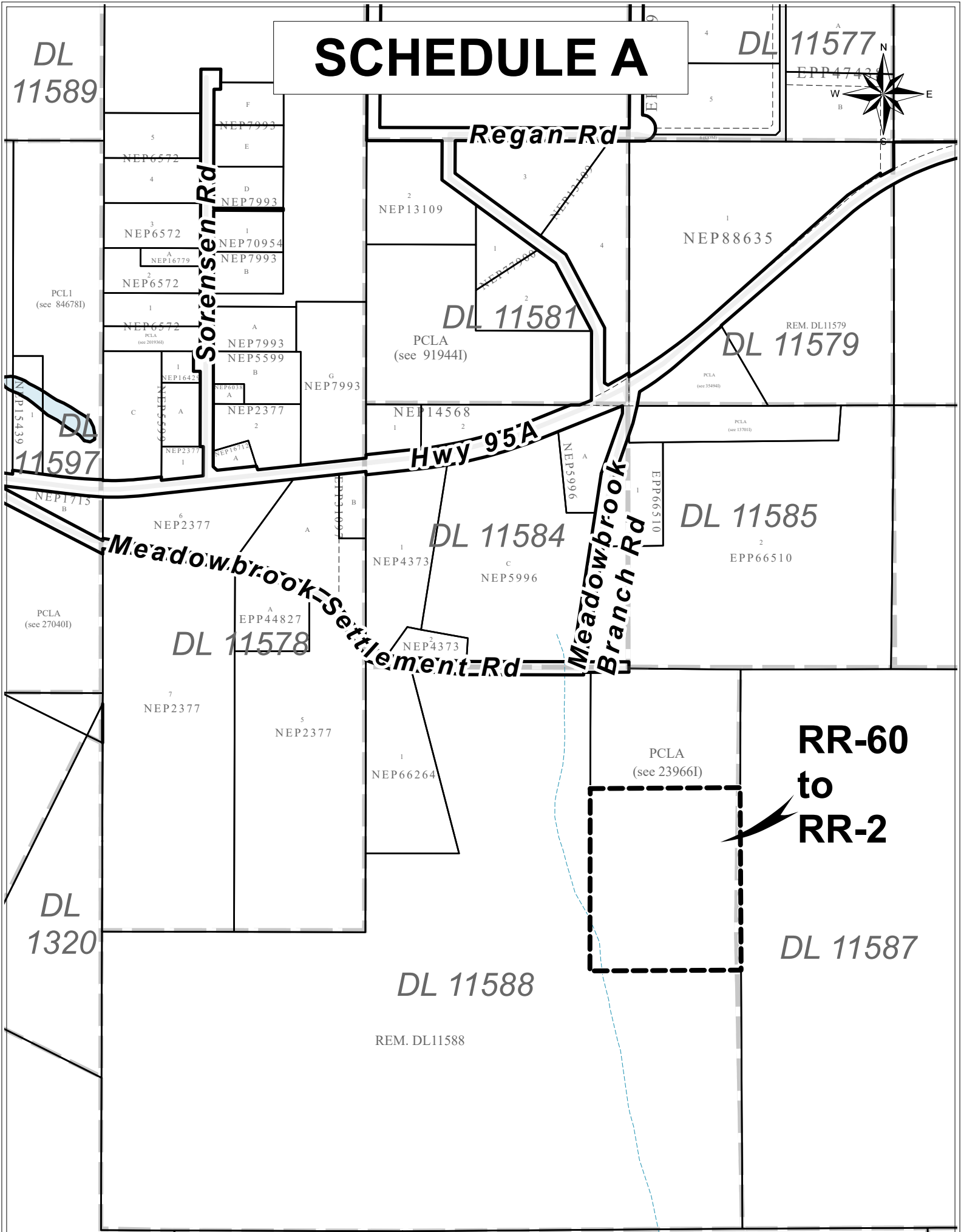
Print Name: Emma Parsons

ADOPTED the      day of      , 2026.

\_\_\_\_\_  
CHAIR

\_\_\_\_\_  
CORPORATE OFFICER

# SCHEDULE A



This is Schedule A referred to in Bylaw No. 3447 cited as "Regional District of East Kootenay – Electoral Area E Zoning and Floodplain Management Bylaw No. 2502, 2014 – Amendment Bylaw No. 50, 2025 (Meadowbrook / Redding)."

Chair

Corporate Officer

Date

**REGIONAL DISTRICT OF EAST KOOTENAY**

**BYLAW NO. 3451**

A bylaw to amend Bylaw No. 1414 cited as "Regional District of East Kootenay – Jaffray, Tie Lake, Rosen Lake Land Use and Floodplain Management Bylaw No. 1414, 1999."

---

WHEREAS the Board of the Regional District of East Kootenay has received an application to amend Bylaw No. 1414;

AND WHEREAS the Board deems it desirable to make this amendment as aforementioned;

NOW THEREFORE, the Board of the Regional District of East Kootenay in open meeting assembled, enacts as follows:


1. This Bylaw may be cited as "Regional District of East Kootenay – Jaffray, Tie Lake, Rosen Lake Land Use and Floodplain Management Bylaw No. 1414, 1999 – Amendment Bylaw No. 38, 2026 (Jaffray / Damstrom)."
2. The land use designation of Lot A District Lot 4590 Kootenay District Plan NEP90960 outlined on the attached Schedule A, which is incorporated in and forms part of this Bylaw, is amended from C-1, Local Commercial to RS-1, Single Family Residential.

READ A FIRST TIME the 13<sup>th</sup> day of March, 2026.

READ A SECOND TIME the 13<sup>th</sup> day of March, 2026.

READ A THIRD TIME the 10<sup>th</sup> day of April, 2026.

APPROVED by the Ministry of Transportation and Transit the 22<sup>nd</sup> day of April, 2026.

Signature: 

Print Name: Rachel Loganberg.

ADOPTED the      day of      , 2026

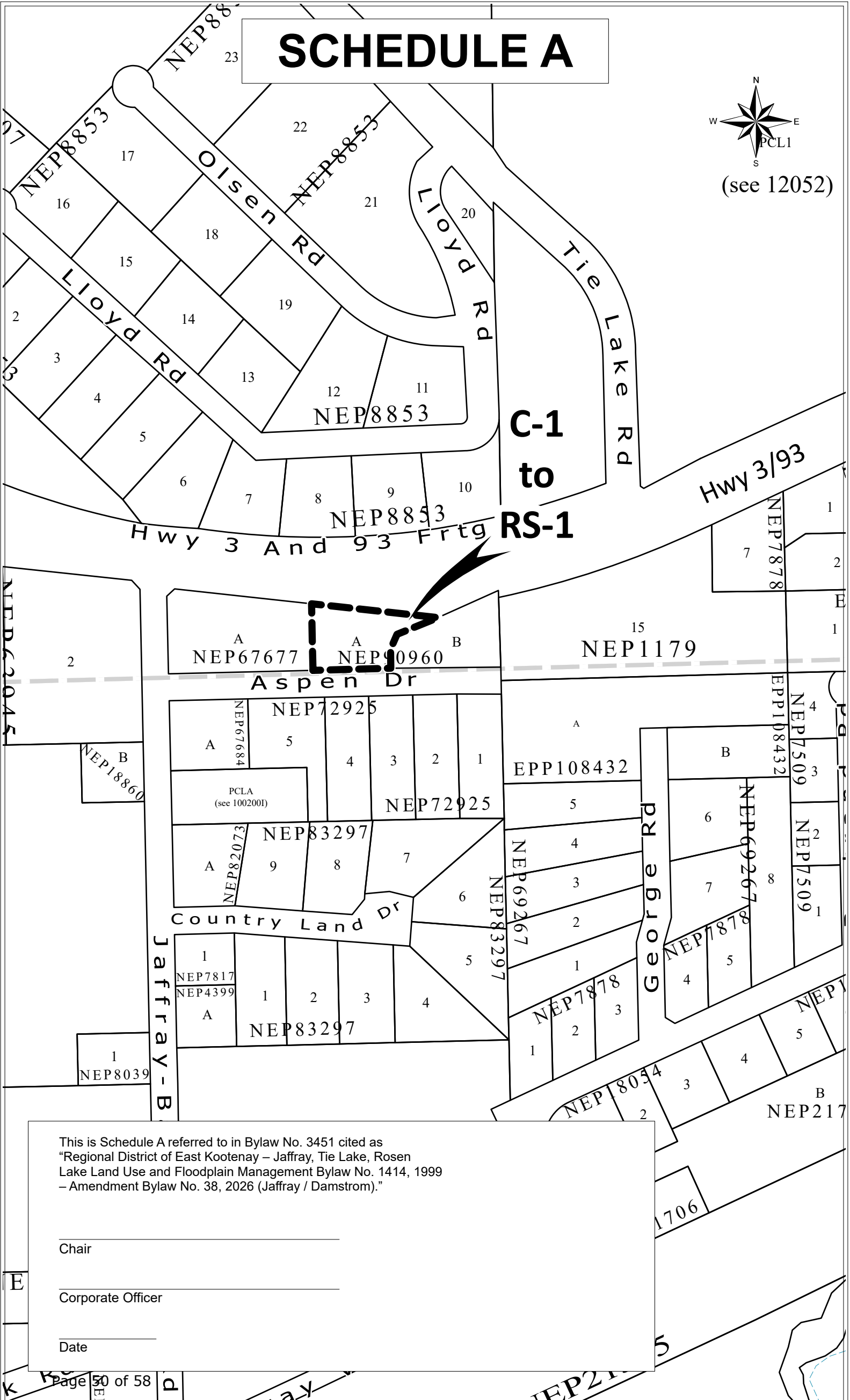
\_\_\_\_\_  
CHAIR

\_\_\_\_\_  
CORPORATE OFFICER

# SCHEDULE A



(see 12052)



**C-1  
to  
RS-1**

This is Schedule A referred to in Bylaw No. 3451 cited as  
 "Regional District of East Kootenay – Jaffray, Tie Lake, Rosen  
 Lake Land Use and Floodplain Management Bylaw No. 1414, 1999  
 – Amendment Bylaw No. 38, 2026 (Jaffray / Damstrom)."

\_\_\_\_\_

Chair

\_\_\_\_\_

Corporate Officer

\_\_\_\_\_

Date



## **Request for Decision Bylaw Amendment Application**

File No: P 726 201  
Reference: Bylaw No. 3451  
Date: February 24, 2026

**Subject:** Bylaw No. 3451 (Jaffray / Damstrom)  
**Applicant:** Krista and Shaun Damstrom  
**Location:** 1891 Aspen Drive, Jaffray  
**Legal:** Lot A District Lot 4590 Kootenay District Plan NEP90960 (PID: 028-241-100)

**Proposal:** To amend the land use designation from commercial to residential to facilitate use of the property for residential use only.

**Development Agreement:** None

**Options:**

1. THAT Bylaw No. 3451 cited as “Regional District of East Kootenay – Jaffray, Tie Lake, Rosen Lake Land Use and Floodplain Management Bylaw No. 1414, 1999 – Amendment Bylaw No. 38, 2026 (Jaffray / Damstrom)” be introduced;
2. THAT Bylaw No. 3451 cited as “Regional District of East Kootenay – Jaffray, Tie Lake, Rosen Lake Land Use and Floodplain Management Bylaw No. 1414, 1999 – Amendment Bylaw No. 38, 2026 (Jaffray / Damstrom)” not proceed.

**Recommendation:** **Option 1**

The proposed use is residential in nature and therefore will be consistent with the general character of the plan area.

---

**Property Information:**

**Land Use Policies:**

- The general character of the plan area will remain residential and agricultural.
- The Board supports a pattern of low density residential development consisting of single family dwellings, two family dwellings and single family dwellings with a secondary suite on parcels not fronting on the lakes. Higher density residential developments will not be supported at this time.

**Current Land Use Designation:** C-1, Local Commercial Zone (minimum parcel size: 0.3 ha)

**Proposed Land Use Designation:** RS-1, Single Family Residential (minimum parcel size: 0.3 ha)

**Parcel Size:** 0.3 ha (0.74 ac)

<b>Property Information cont'd:</b>	<p><b>Density:</b> One accessory dwelling unit is permitted in the C-1 designation. One single family dwelling and secondary suite or one duplex is permitted in the RS-1 designation. Both designations have a minimum parcel area requirement of 0.3 ha. No additional parcels can be created with either land use designation.</p> <p><b>ALR Status:</b> Not within the ALR</p> <p><b>Interface Fire Hazard Rating:</b> High, within the Jaffray Fire Protection Area</p> <p><b>BC Assessment:</b> Residential &amp; Business/Other (Store &amp; Service)</p> <p><b>Water and Sewer Services:</b> Onsite</p> <p><b>Flood Hazard Rating:</b> n/a</p>
<b>Professional Studies:</b>	None
<b>Additional Information:</b>	<ul style="list-style-type: none"><li>▪ The land and building is currently being used as commercial and accessory residential use. The proposal is to use the parcel wholly for residential use.</li></ul>
<b>Consultation:</b>	<p><b>APC Area B:</b> Support recommended.</p> <p><b>Referral Agencies:</b></p> <ul style="list-style-type: none"><li>▪ <b>Interior Health Authority:</b> No response</li><li>▪ <b>Transportation &amp; Transit:</b> No response</li><li>▪ <b>Water, Land and Resource Stewardship:</b> No response</li><li>▪ <b>Ktunaxa Nation Council:</b> No response</li><li>▪ <b>School District No. 5:</b> No response</li><li>▪ <b>Telus:</b> No response</li></ul>
<b>Documents Attached:</b>	<ul style="list-style-type: none"><li>▪ Bylaw</li><li>▪ Location Map</li><li>▪ Land Use Map</li><li>▪ Land Use Designation Map</li><li>▪ Site Plan</li><li>▪ Aerial Photo</li></ul>
<b>RDEK Contact:</b>	<p>Krista Gilbert, Planning Technician Phone: 250-489-0314 Email: <a href="mailto:kgilbert@rdek.bc.ca">kgilbert@rdek.bc.ca</a></p>

**REGIONAL DISTRICT OF EAST KOOTENAY**

**BYLAW NO. 3456**

A bylaw to amend Bylaw No. 2432 cited as “Regional District of East Kootenay – Lake Kooconusa Official Community Plan Bylaw No. 2432, 2013.”

---

WHEREAS the Board of the Regional District of East Kootenay has received an application to amend Bylaw No. 2432;

AND WHEREAS the Board deems it desirable to make this amendment as aforementioned;

NOW THEREFORE, the Board of the Regional District of East Kootenay in open meeting assembled, enacts as follows:

1. This Bylaw may be cited as “Regional District of East Kootenay – Lake Kooconusa Official Community Plan Bylaw No. 2432, 2013 – Amendment Bylaw No. 11, 2026 (Kooconusa Village / KV Properties Inc.).”
2. The designation of Lot B, District Lot 10348, Kootenay District, Plan EPP101154, Except Plans EPP109367 and EPP138855 outlined on the attached Schedule A, which is incorporated in and forms part of this Bylaw, is amended from C, Commercial to R-MF, Residential Multi-Family.

READ A FIRST TIME the    day of                    , 2026.

READ A SECOND TIME the    day of                    , 2026.

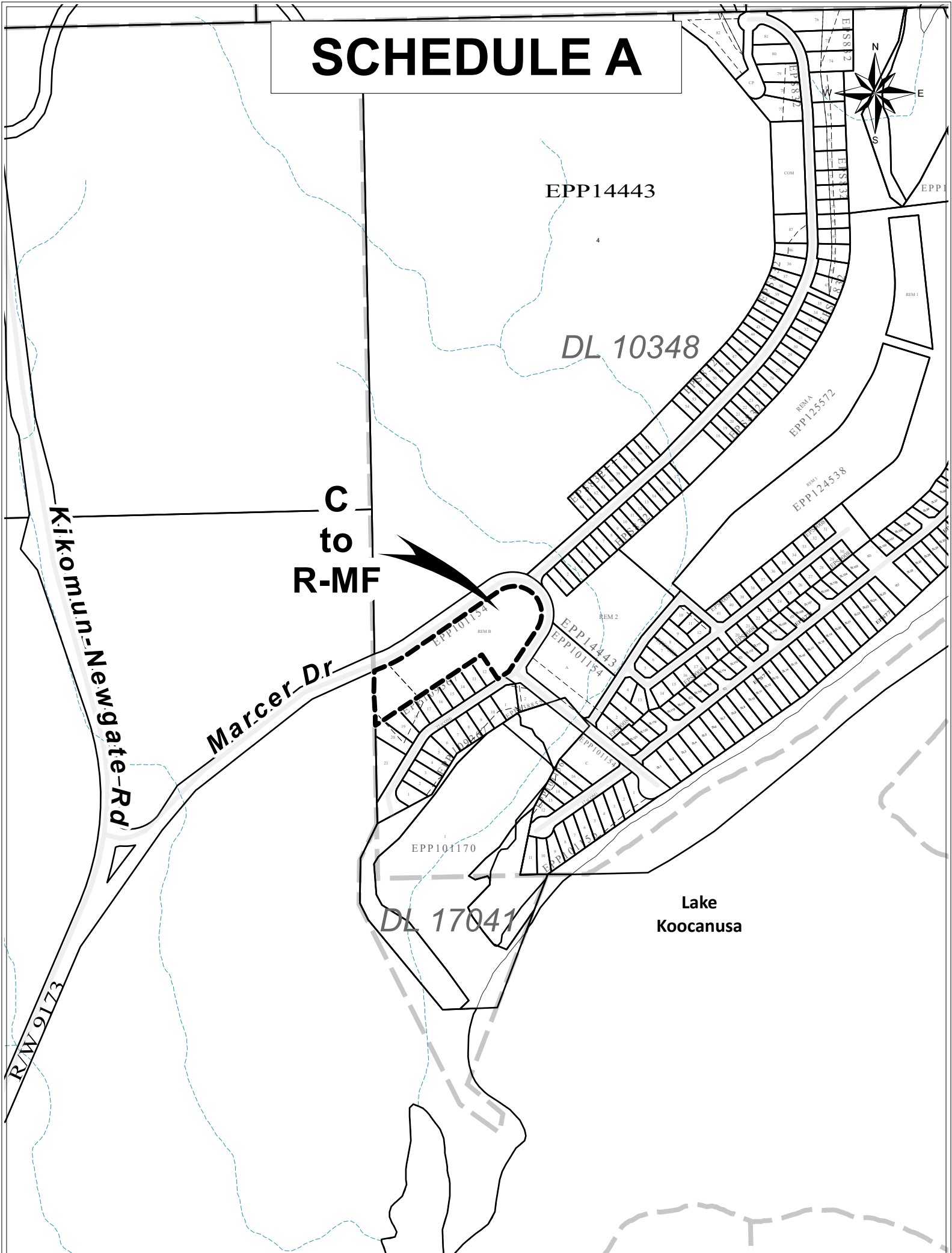
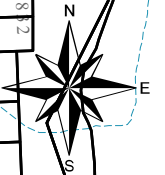
READ A THIRD TIME the    day of                    , 2026.

ADOPTED the    day of                    , 2026.

\_\_\_\_\_  
CHAIR

\_\_\_\_\_  
CORPORATE OFFICER

# SCHEDULE A



This is Schedule A referred to in Bylaw No. 3456 cited as  
"Regional District of East Kootenay – Lake Kooconusa Official  
Community Plan Bylaw No. 2432, 2013 – Amendment  
Bylaw No. 11, 2026 (Kooconusa Village / KV Properties Inc.)."

\_\_\_\_\_  
Chair

\_\_\_\_\_  
Corporate Officer

\_\_\_\_\_  
Date

**REGIONAL DISTRICT OF EAST KOOTENAY**

**BYLAW NO. 3457**

A bylaw to amend Bylaw No. 2127 cited as “Regional District of East Kootenay – SweetWater Zoning and Floodplain Management Bylaw No. 2127, 2009.”

---

WHEREAS the Board of the Regional District of East Kootenay has received an application to amend Bylaw No. 2127;

AND WHEREAS the Board deems it desirable to make this amendment as aforementioned;

NOW THEREFORE, the Board of the Regional District of East Kootenay in open meeting assembled, enacts as follows:

1. This Bylaw may be cited as “Regional District of East Kootenay – SweetWater Zoning and Floodplain Management Bylaw No. 2127, 2009 – Amendment Bylaw No. 13, 2026 (Kooconusa Village / KV Properties Inc.)”
2. The designation of Lot B, District Lot 10348, Kootenay District, Plan EPP101154, Except Plans EPP109367 and EPP138855 outlined on the attached Schedule A, which is incorporated in and forms part of this Bylaw, is amended from C-1, Mixed Use Village Commercial Zone to R-3, Multiple Family Residential – Medium Density Zone.
3. Section 3.03 Definitions is amended by adding the following:  

**DUPLEX** means one *building* containing two *dwelling units* that:

  - (a) share a common roof and foundation;
  - (b) are separated by a common wall; and
  - (c) where neither *dwelling unit* is a *manufactured home*. A *building* containing a *secondary suite* is not a *duplex*.
4. Schedule A, Section 3.01(3) is hereby repealed and the following added:  

(3) All parking areas, *off-street parking spaces*, and *off-street loading spaces*, for other than *single family dwellings* and *duplex dwellings* must not have a slope of more than 8%.
5. Schedule A, Section 3.02(4)(a) is hereby repealed and the following added:  

(a) *Single family dwelling and duplex dwelling* - 2 per *dwelling unit*
6. Schedule A, Section 4.06(1)(b) is hereby amended and the following added:  

(b) *Duplex*.

READ A FIRST TIME the    day of                    , 2026.

READ A SECOND TIME the    day of                    , 2026.

READ A THIRD TIME the    day of                    , 2026.

ADOPTED the    day of                    , 2026.

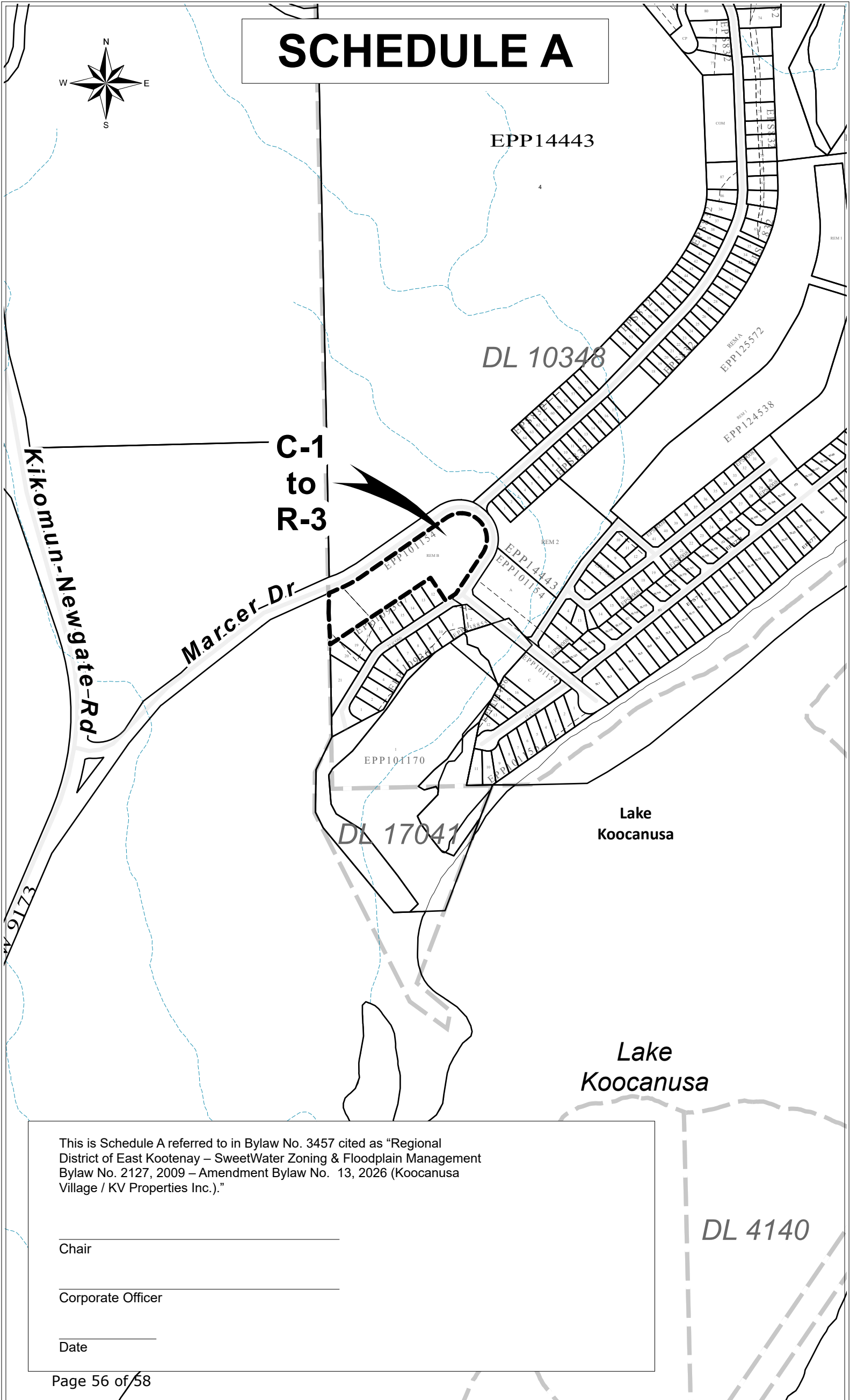
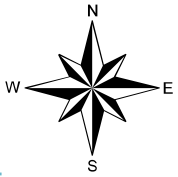
---

CHAIR

---

CORPORATE OFFICER

# SCHEDULE A



**C-1  
to  
R-3**

This is Schedule A referred to in Bylaw No. 3457 cited as "Regional District of East Kootenay – SweetWater Zoning & Floodplain Management Bylaw No. 2127, 2009 – Amendment Bylaw No. 13, 2026 (Koocanusa Village / KV Properties Inc.)."

Chair

Corporate Officer

Date

No. \_\_\_\_\_

MOVED by Director \_\_\_\_\_ SECONDED by Director \_\_\_\_\_

THAT a public hearing be held regarding Bylaw No. 3456 and Bylaw No. 3457 and the hearing be delegated to:

Director Stan Doehle, Electoral Area B  
Director Rob Gay, Electoral Area C

**FOR INFORMATION ONLY:**

**Public Hearing - Tuesday, May 26, 2026**  
**6:00 pm**  
**Zoom webinar conference**

## Reports from Directors

### Director Clovechok

- Columbia Basin Trust
- Four J Gypsum Mine Development Review Committee
- Kootenay West Mine Amendment Technical Advisory Committee
- Ktunaxa/Kinbasket Local Government Treaty Advisory Committee

### Director Doehle

- Canadian Columbia River Local Government Committee
- Columbia Basin Regional Advisory Committee
- International Joint Commission – Council of Governments Advisory Group
- *BC Broadband Conference*

### Director Doherty

- CVCED Bioenergy with Carbon Capture & Storage Feasibility Study Steering Committee

### Chair Gay

- Cranbrook Chamber of Commerce – Local Government Liaison
- Elko Class C Park Board
- Highway 3 Mayors' and Chairs' Coalition
- Municipal Finance Authority
- Shuswap Band / RDEK Meetings
- Southeastern BC Regional Connectivity Committee
- *AKBLG Convention*
- *UBCM Chair & CAO Forum*

### Director Gray

- Columbia Basin Rural Development Institute Advisory Committee
- Kootenay Conservation Program Committee

### Director McDonald

- Environmental Assessment Working Groups – Fernie/Michel Creek Coking Coal

### Director Miller

- Columbia Valley Physician Recruitment
- East Kootenay Division of Family Practice Physician Recruitment Committee
- Municipal Insurance Association

### Director Schnider

- Columbia Valley Recreation Planning Committee
- East Kootenay Accessibility Advisory Committee
- Economic Trust of the Southern Interior Regional Advisory Committee
- Imagine Kootenay Steering Committee