

REGIONAL DISTRICT OF EAST KOOTENAY

BYLAW NO. 3144

A bylaw to amend Bylaw No. 2255 cited as “Regional District of East Kootenay – Rockyview Official Community Plan Bylaw No. 2255, 2010.”

WHEREAS the Board of the Regional District of East Kootenay has received an application to amend Bylaw No. 2255;

AND WHEREAS the Board deems it desirable to make this amendment as aforementioned;

NOW THEREFORE, the Board of the Regional District of East Kootenay in open meeting assembled, enacts as follows:

1. This Bylaw may be cited as “Regional District of East Kootenay – Rockyview Official Community Plan Bylaw No. 2255, 2010 – Amendment Bylaw No. 28, 2022 (Cranbrook West / Corrigal & Cunliffe).”
2. The designation of Lot 9, District Lot 4841, Kootenay District Plan EPP100100, outlined on the attached Schedule A, which is incorporated in and forms part of this Bylaw, is amended from R-RES, Residential Reserve to LH, Large Holdings.

READ A FIRST TIME the day of _____, 2022.

READ A SECOND TIME the day of , 2022.

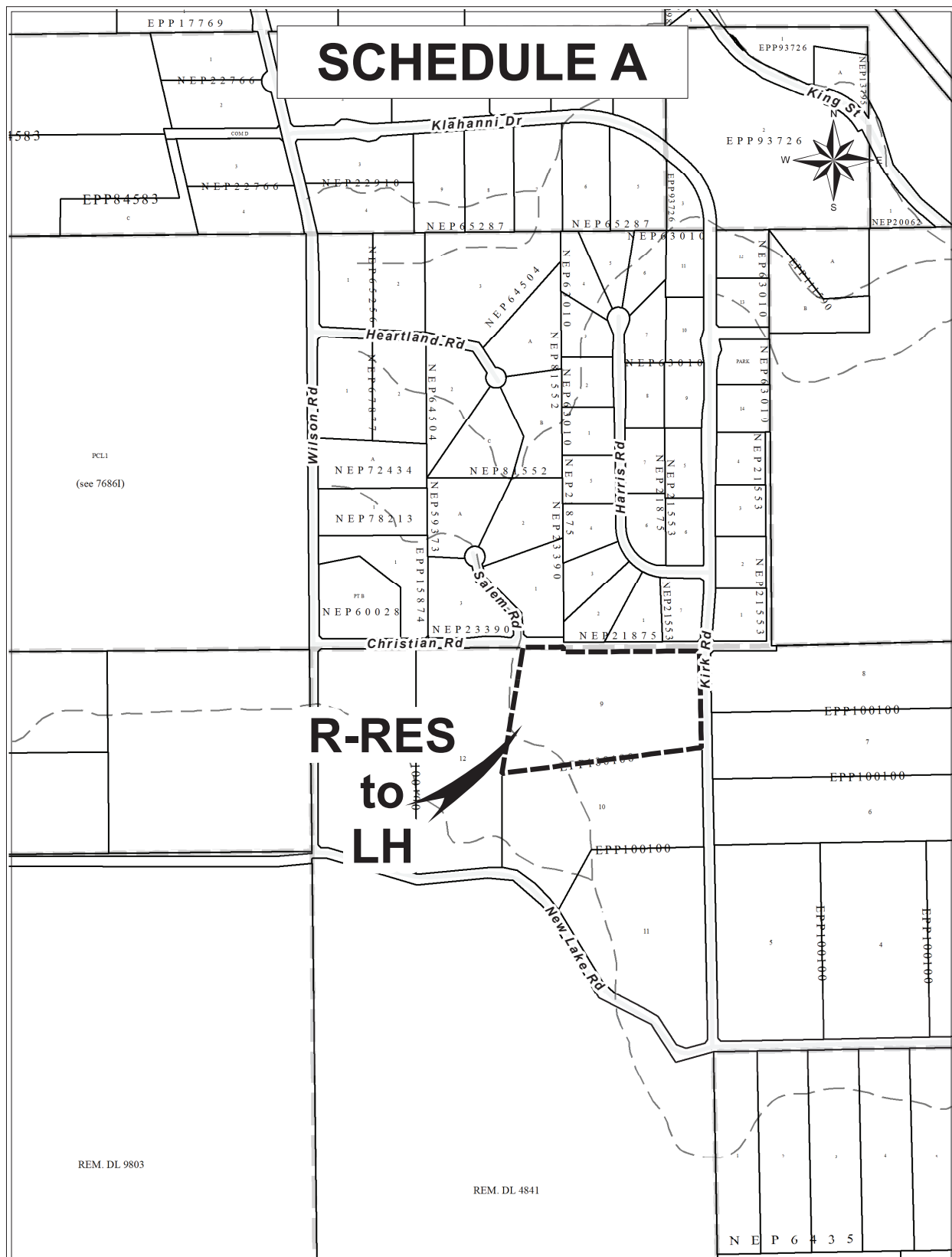
READ A THIRD TIME the day of , 2022.

ADOPTED the day of , 2022.

CHAIR

CORPORATE OFFICER

SCHEDULE A



This is Schedule A referred to in Bylaw No. 3144 cited as
"Regional District of East Kootenay – Rockyview Official
Community Plan Bylaw No. 2255, 2010 – Amendment
Bylaw No. 28, 2022 (Cranbrook West / Corrigan & Cunliffe)."

Chair

Corporate Officer

Date

REGIONAL DISTRICT OF EAST KOOTENAY

BYLAW NO. 3145

A bylaw to amend Bylaw No. 2913 cited as "Regional District of East Kootenay – Electoral Area C South Zoning & Floodplain Management Bylaw No. 2913, 2019."

WHEREAS the Board of the Regional District of East Kootenay has received an application to amend Bylaw No. 2913;

AND WHEREAS the Board deems it desirable to make this amendment as aforementioned;

NOW THEREFORE, the Board of the Regional District of East Kootenay in open meeting assembled, enacts as follows:

1. This Bylaw may be cited as "Regional District of East Kootenay – Electoral Area C South Zoning & Floodplain Management Bylaw No. 2913, 2019 – Amendment Bylaw No. 13, 2022 (Cranbrook West / Corrigan & Cunliffe)."
2. The designation of Lot 9, District Lot 4841, Kootenay District Plan EPP100100, outlined on the attached Schedule A, which is incorporated in and forms part of this Bylaw, is amended from RR-8, Rural Residential (Country) Zone to RR-4, Rural Residential (Hobby Farm) Zone.

READ A FIRST TIME the day of , 2022.

READ A SECOND TIME the day of , 2022.

READ A THIRD TIME the day of , 2022.

ADOPTED the day of , 2022.

CHAIR

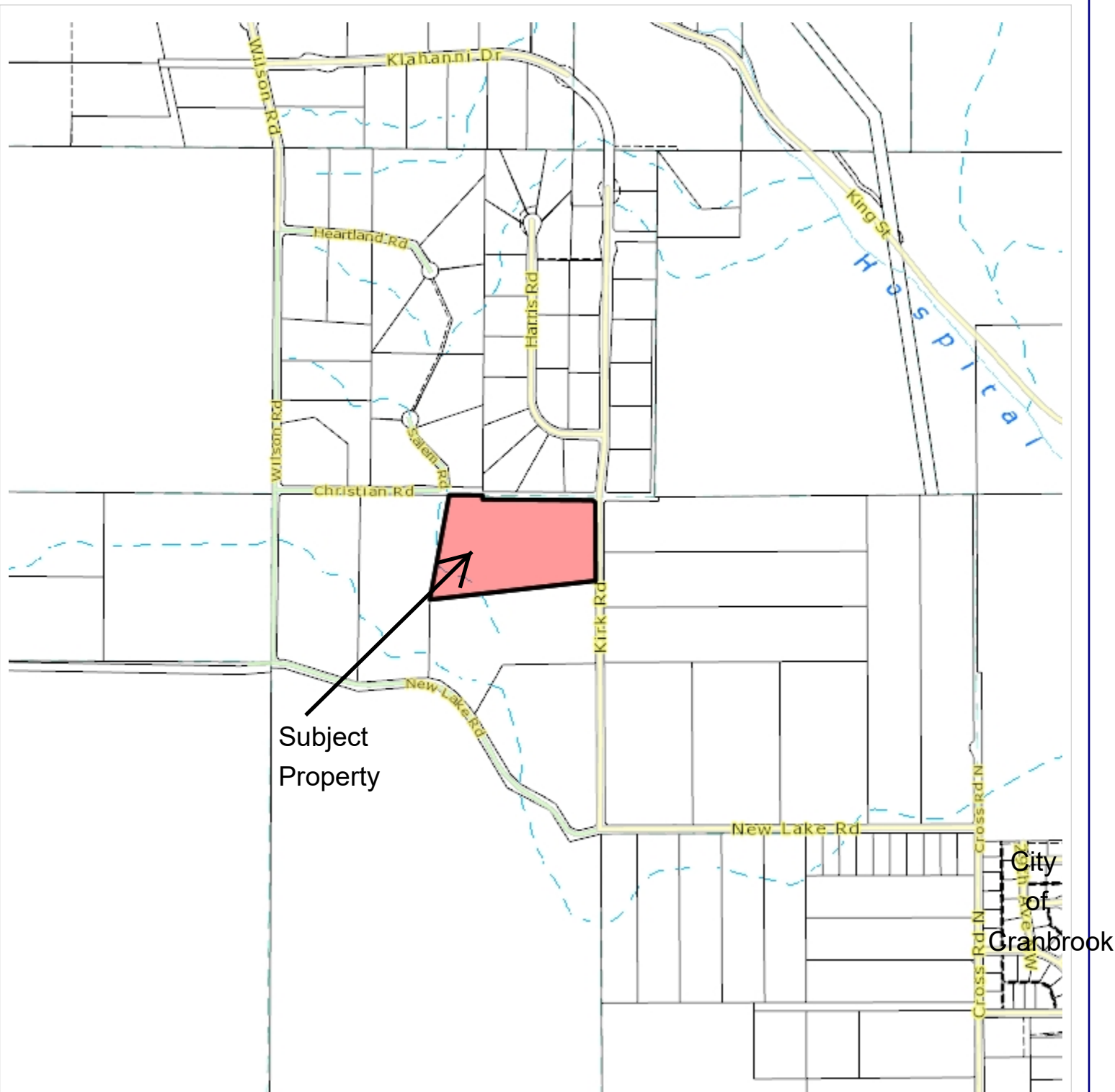
CORPORATE OFFICER

[illegible]

Date _____

PCLPTA
(see 26162I)

Location Map



Notes:

500 0 250 500 Meters

WGS_1984_Web_Mercator_Auxiliary_Sphere
RDEK GeoViewer - 3-11-2022 10:02 AM

Scale = 1:20,000



THIS MAP IS NOT TO BE USED FOR NAVIGATION

This map is a user generated static output from an Internet mapping site and is for reference only. Data layers that appear on this map may or may not be accurate, current, or otherwise reliable.

Notes:

175 0 88 175 Meters

WGS_1984_Web_Mercator_Auxiliary_Sphere
RDEK GeoViewer - 3-11-2022 10:29 AM

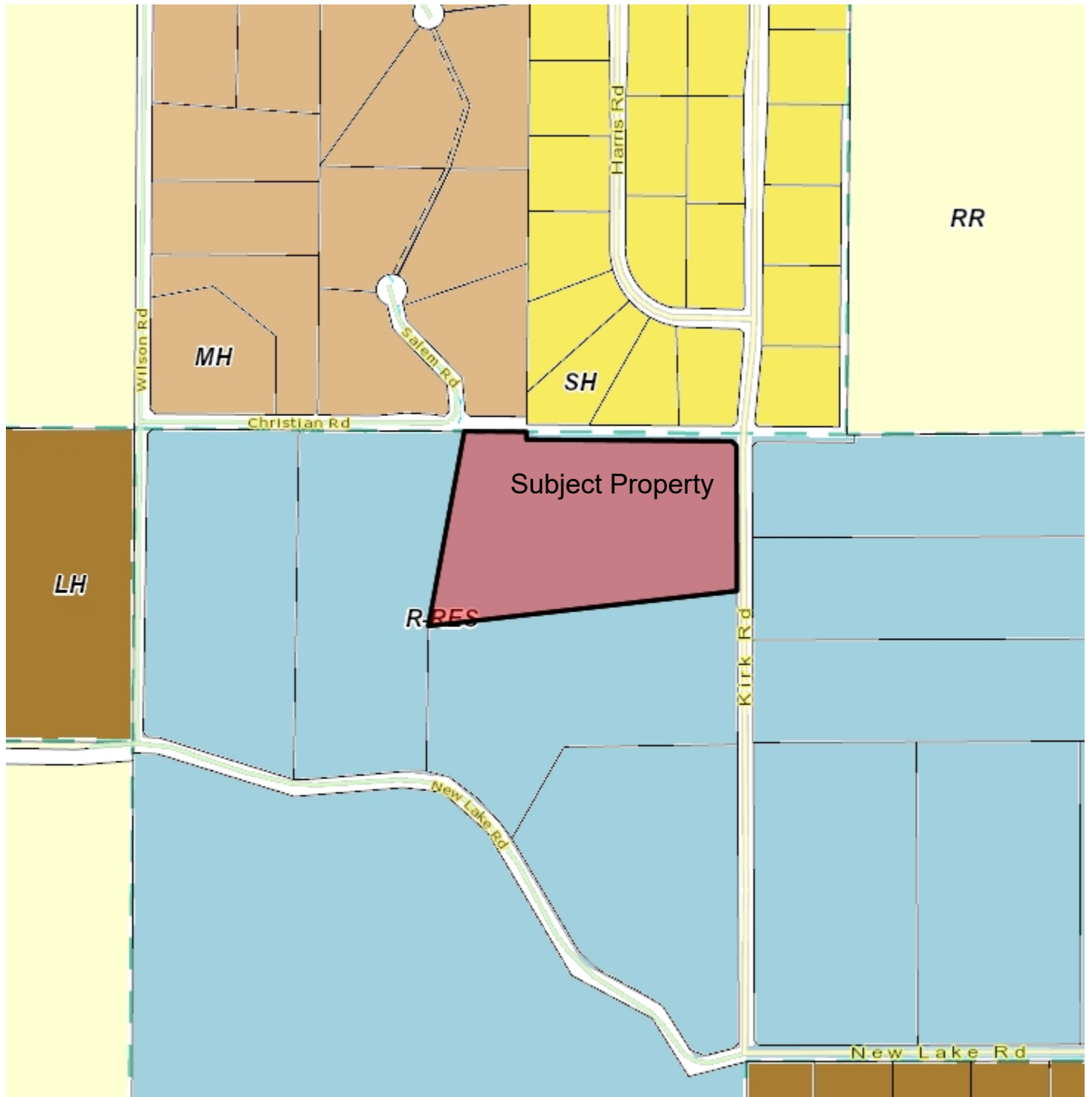
Scale = 1: 7,000



THIS MAP IS NOT TO BE USED FOR NAVIGATION

This map is a user generated static output from an Internet mapping site and is for reference only. Data layers that appear on this map may or may not be accurate, current, or otherwise reliable.

OCP Designation Map



Notes:

275 0 138 275 Meters

WGS_1984_Web_Mercator_Auxiliary_Sphere
RDEK GeoViewer - 3-11-2022 9:47 AM

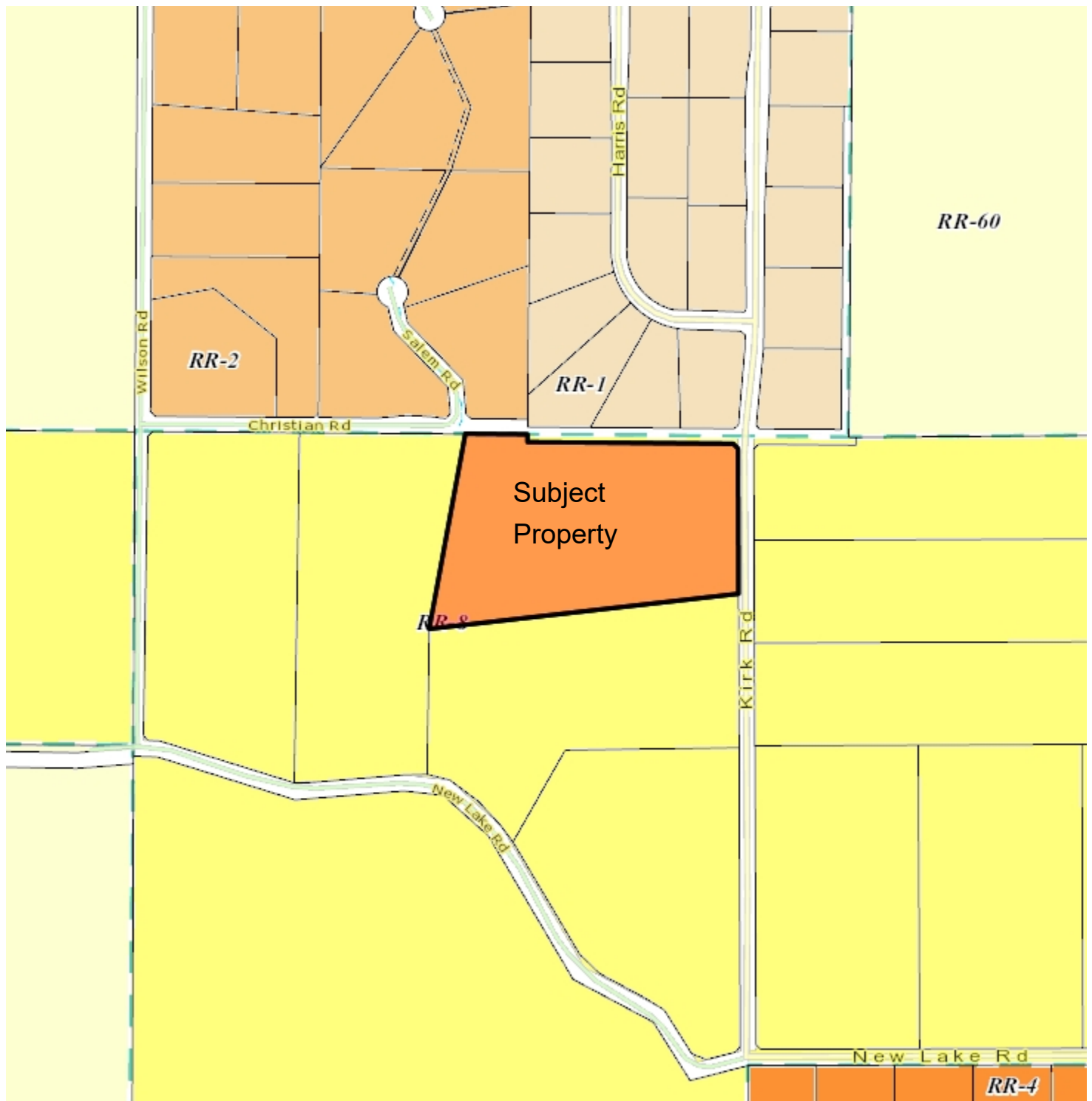
Scale = 1: 11,000



THIS MAP IS NOT TO BE USED FOR NAVIGATION

This map is a user generated static output from an Internet mapping site and is for reference only. Data layers that appear on this map may or may not be accurate, current, or otherwise reliable.

Zone Designation Map



Notes:

275 0 138 275 Meters

WGS_1984_Web_Mercator_Auxiliary_Sphere
RDEK GeoViewer - 3-11-2022 9:48 AM

Scale = 1: 11,000



THIS MAP IS NOT TO BE USED FOR NAVIGATION

This map is a user generated static output from an Internet mapping site and is for reference only. Data layers that appear on this map may or may not be accurate, current, or otherwise reliable.

