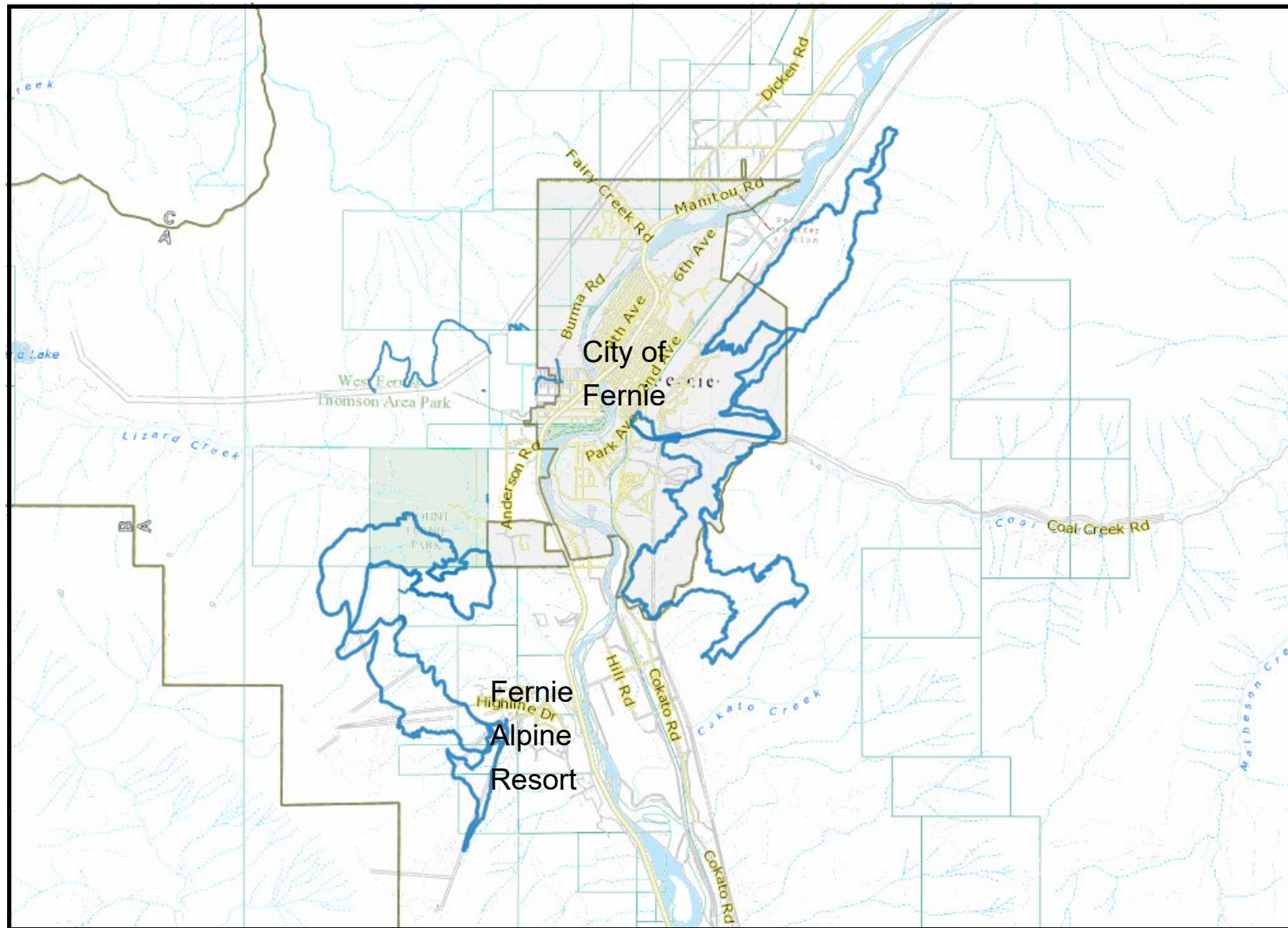
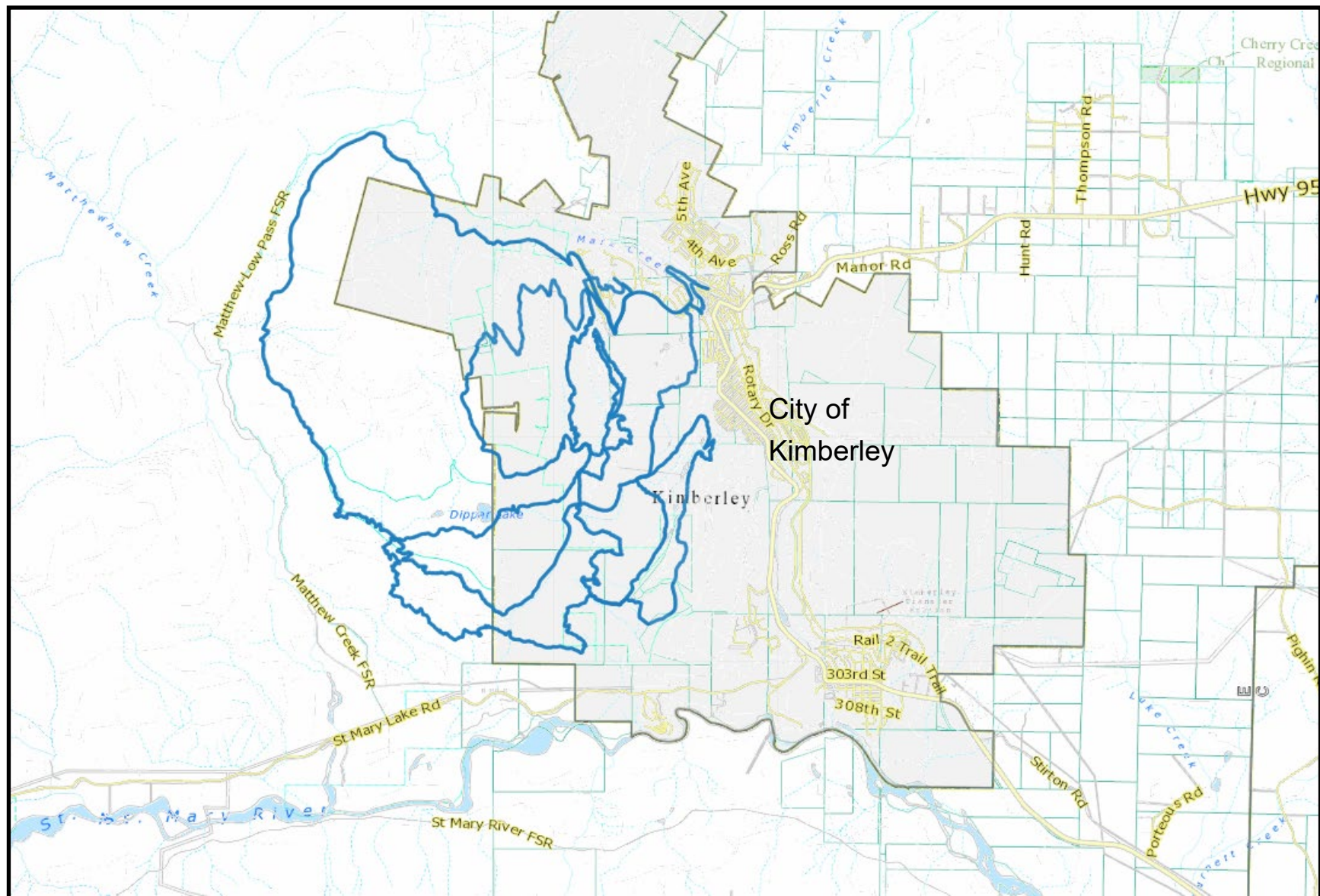


## Location Map – Fernie



## Location Map – Kimberley



## **Executive Summary**

### **General Overview of Business (Existing or Proposed)**

TransRockies Events Inc. is a well-respected event production company based in of Calgary, Alberta. We have produced numerous events in Canada and BC, including the TransRockies Challenge, TransRockies Classic and SingleTrack 6 stage races, all of which have required FrontCounter BC applications for numerous years.

This proposal is the Singletrack 6 occurring from September 6-11, 2022. Singletrack 6 will be located in the following locations: Fernie, Kimberley, and Rossland. This event will replace the event that was originally proposed for 2020 – file # 4406065 and again in 2021 – File 4406144. Both 2020 and 2021 events were cancelled due to the COVID-19 pandemic.

Singletrack 6 is a 6-day endurance mountain bike race held in British Columbia. The event is expected to draw up to 350 participants from over 15 nations. The 2022 event will be the 19th annual event – starting with the TransRockies Challenge in 2002.

The event uses a pre-determined and marked route, with a designated stage start and finish for each day. The 2022 Route Outline is:

- Stage 1 – September 6 – Fernie
- Stage 2 – September 7 – Fernie Alpine Resort
- Stage 3 – September 8 – Kimberley
- Stage 4 – September 9 – Kimberley Alpine Resort
- Stage 5 – September 10 – Rossland South
- Stage 6 – September 11 – Rossland Red Mountain

The operations of Singletrack 6 can be divided into two major components: Route Operations and Staging Operations. Staging Operations will take place on land that is already leased, privately owned, or within municipal boundaries, and includes participant and support staff accommodations, catering, waste management, bike service, logistics and entertainment. This management plan will focus on route operations, because these are the activities that take place on crown land. The primary activities include:

- The Race – Participants compete solo or in teams over forestry roads and trails. Singletrack 6 stages may vary in distance from 25 to 40 km per day. The race is a mass start, or time trial start, each day, usually between 8 and 10 AM.
- Course Marking and Control – The course is marked up to 2 days in advance by bicycle using pin flags and coroplast arrow signs. Event staff are on course during the race to i) check markings ii) ensure that participants are on course iii) sweep the last riders and clean marking and any garbage from the course and iv) respond to any issues that arise during the course of the event. Course crew members are in communication by cell phone, satellite phone and/or radio. The course is cleared of markings and trash on the same day that the stage is raced.
- Medical Response – The race is covered by a medical crew which accesses various parts of the route by truck and/or off-road vehicle.
- Checkpoints – Each day will include 1-3 checkpoints where participants can get food and water, and other support as required.
- Media – A limited number of television cameras may follow the race by bicycle. Other media will typically attend check points by vehicle access.

### **Key Areas of Concern**

- The event creates a generally minor impact in its operating areas, however, due to the distance travelled by participants and the entourage, there are a large number of parties that must be aware of the event and be prepared to accommodate it passing through, including land managers, commercial industrial operators, commercial recreation operators, and other interested parties.

## **Section 1: Description of The Operation & Activities Offered**

### **General Description of Operation**

#### **General Area**

- The general areas where the event is held are Fernie, Kimberley and Rossland
- Maps and GPS files attached.

#### **Base Operation**

The base operation moves each day as the event progresses from stage to stage. Base operations include the medical headquarters, race office, and race services such as catering and bike service. Base operations take place on private land and will be made up of temporary structures (tents) and vehicles.

- The daily bases in will be:
- Stage 1: Fernie Aquatic Centre
- Stage 2: Fernie Alpine Resort
- Stage 3: Kimberley Downtown
- Stage 4: Kimberley Alpine Resort
- Stage 5: Rossland Centennial Field
- Stage 6: Red Mountain

#### **Access**

- Clients will join the race at the start in each community and be bused from stage to stage.
- Support Vehicles (Trucks, Motorhomes, Cars) will use the public highway system to access staging area.
- Check points will be accessible by forestry roads to support personnel (trucks and vans).

#### **Staff**

Staff Category	# of Employees Singletrack 6	Experience and/or Certificates
Volunteers	25	18 or older
Event Staff	35	Event Experience
Medical Crew	6	First aid/Paramedics/MDs
Television Crew	2	
Timing Crew	3	
Massage Therapists	8	
Mechanics	8	