

Dec 31, 2019

Shawn Tomlin  
CAO, Regional District of East Kootenay  
19 24 Ave S,  
Cranbrook, BC V1C 3H8

Dear Mr. Tomlin,

1. The purpose of this letter is to seek support and a funding commitment for a potential fibre optic backbone project between the communities of Kimberley and Wasa following along highway 95A. The Columbia Basin Broadband Corporation is evaluating a potential application submission to the Connecting BC program prior to the current intake deadline of Feb 15, 2020; CBBC also is evaluating a submission to the CRTC Broadband Fund Program prior to the current intake deadline of March 27, 2020.

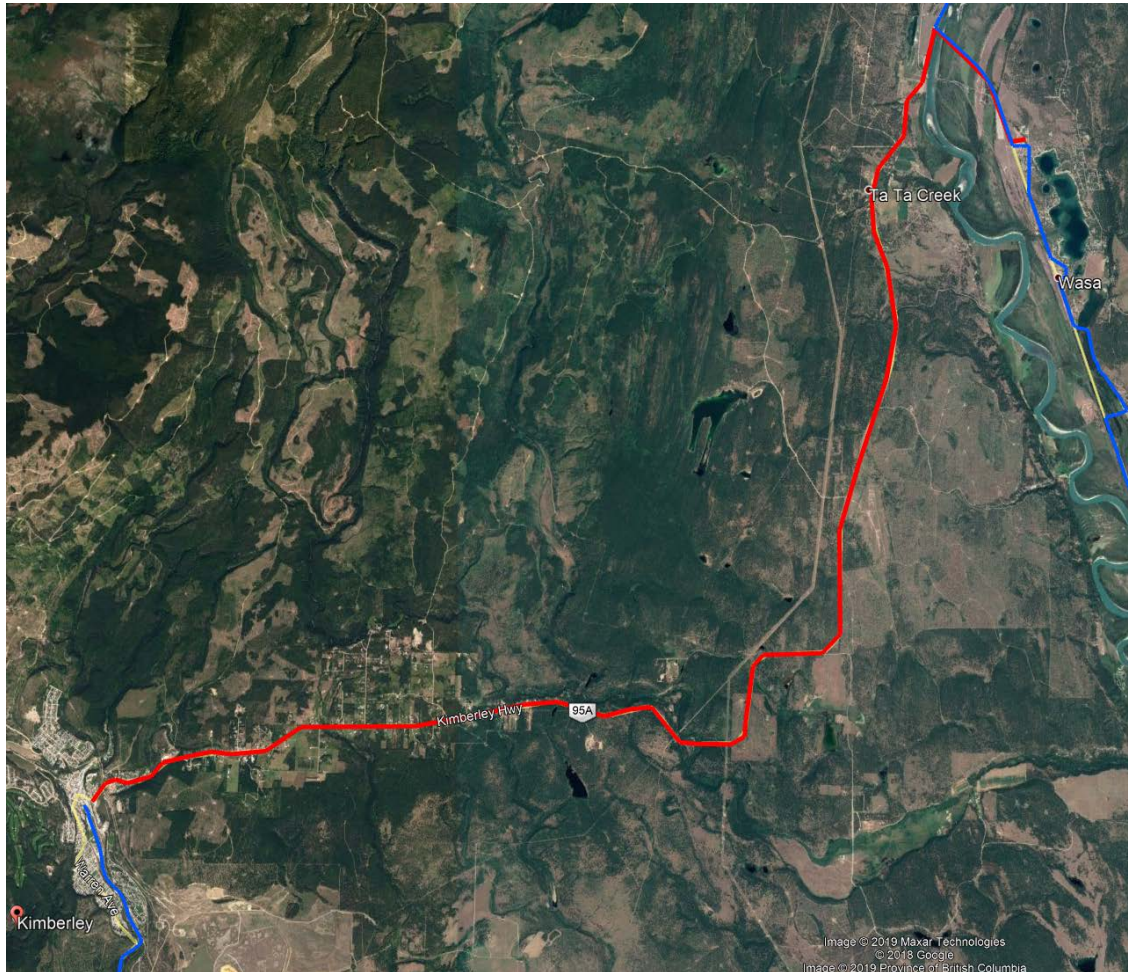
#### Background

2. Broadband connectivity in rural Canada continues to be a challenge and in response the Federal Government has created a funding program through the CRTC.
3. In addition, the Province of British Columbia is continuing its program called Connecting BC to assist in bringing connectivity to underserved areas.
4. Columbia Basin Broadband Corporation (CBBC) established by the Columbia Basin Trust in 2011 has a mandate to bring better connectivity into the region.
5. Over the past eight years the CBBC has constructed approximately 1000km of fibre optic backbone throughout many of the Basin highway corridors as well as established numerous Point of Presence (POP) breakout locations in communities along the backbone route.
6. Fibre backbone is the primary infrastructure required to enable last mile services to residents and businesses. The Regional District of East Kootenay has supported the efforts of the CBBC on other backbone projects and the results of that support have led to several Internet Service Providers extending their networks to reach more communities.

#### Project Overview

7. The project proposal is to construct approximately 35 km of fibre optic backbone between Kimberley and Wasa following along Highway 95A.
8. Two new POP locations will be constructed in the communities of Meadowbrook and Ta Ta Creek. Meadowbrook and Ta Ta Creek are identified as eligible communities under the CRTC Broadband Fund and Connecting BC Program.
9. It is estimated that there are approximately 470 homes located in this corridor.
10. This project is the precursor to future investment of last mile services to residents. .

11. The estimated cost of this backbone project is \$1,620,000.
12. In addition to RDEK's funding commitment, match funding will be sought from the CRTC Broadband fund, the Connecting BC program and the Columbia Basin Trust.
13. A map of the project area is as follows. The red line is the proposed build and the blue lines represent the existing CBBC fibre backbone.



Resolution

THAT a letter of support be provided to Columbia Basin Broadband Corporation for their application to the Connecting BC program and the CRTC Broadband Fund, indicating an intent for RDEK to provide a contribution of up to \$200,000 (12.3%) towards the proposed broadband infrastructure project.

Sincerely,

Dave Lampron  
Chief Operating Officer

Attached. (CBBC Fibre Map)

# Columbia Basin Broadband Corporation Network

## Map Legend

- Existing Point of Presence
- 📶 Existing Wireless Tower
- 📶 Existing Antenna Stand
- Fibre Optic Network
- Redundant Connection to Internet Exchange
- 2019/20 Point of Presence
- 2019/20 Fibre Optic Network
- Highways

