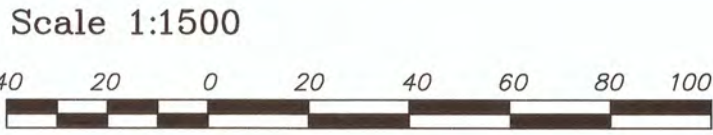


Topographic Plan of the Lake Windermere Groyne

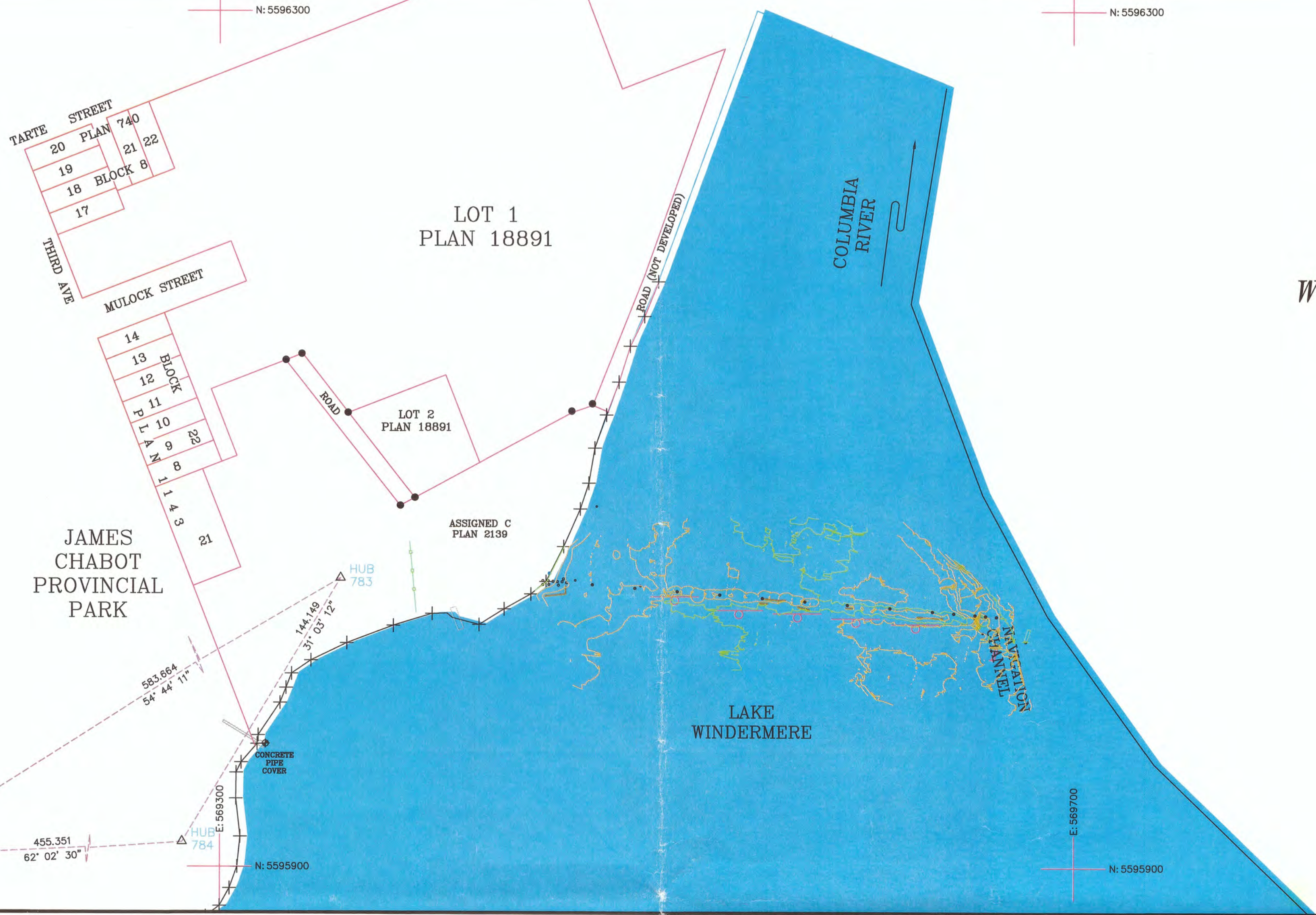
Invermere, British Columbia.
B.C.G.S. 82K.060



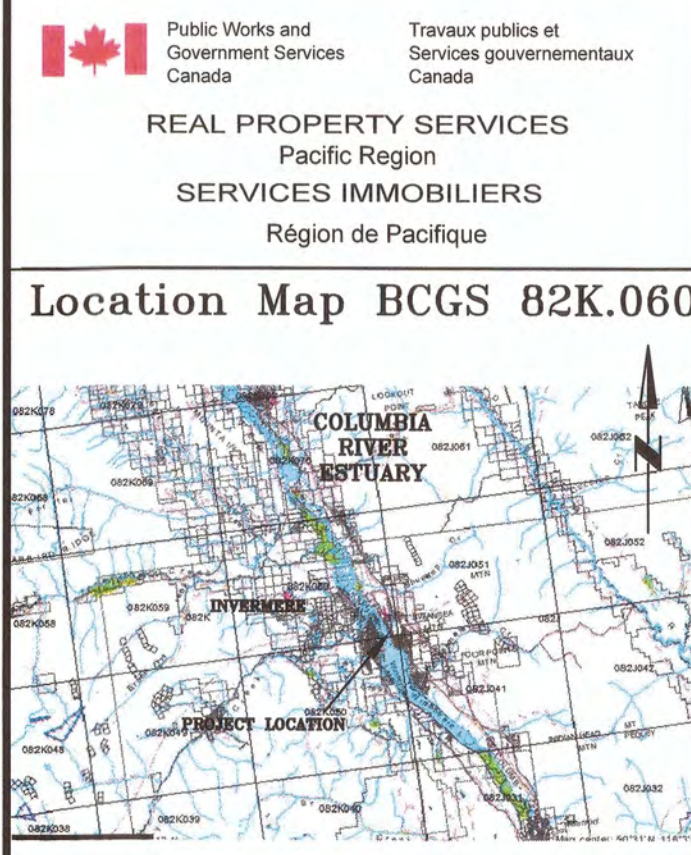
All distances are in metres

- Legend:**
- STANDARD IRON POST FOUND
 - △ CONTROL POINT SET
 - ⊙ ACTIVE CONTROL POINT
 - ⊙ BM SET
 - ⊙ UNMARKED MEASURED POINT
 - PROPERTY LINES
 - MAJOR CONTOUR
 - MINOR CONTOUR
 - SIGN
 - SPAR BUOY

| Control Points NAD83 (CSRS) UTM 11 ELEVATIONS ARE ORTHOMETRIC (CGVD28) | | | | |
|--|------------|-----------|-----------|-------------|
| Point # | Northing | Easting | Elevation | Description |
| 783 | 5596034.92 | 569356.65 | 800.38 | HUB |
| 784 | 5595911.48 | 569282.32 | 800.89 | HUB |



E:569900



Bearings are Grid, and Derived from Dual Frequency Differential GPS Observations Between Hub (753) and Hub (754) and Invermere Active Control Point (GCM 164418) and Referenced to the 117th Meridian.

Elevations are derived from GPS observations and are Orthometric and are Referenced to Canadian Geodetic Vertical Datum 1928 (Ht2.0). All Distances are Ground Unless Otherwise Noted. To Calculate Grid distance, Multiply by the Combined Scale Factor 0.99953610

This Plan was prepared for survey information purposes and is for the exclusive use of our client. The signatory accepts no responsibility or liability for any damages that may be suffered by a third party as a result of reproduction, transmission or alteration to this document without consent of the signatory.

Date of Survey Sept 21-22, 2010 By I.R.Robertson, BCLS
SF#3249.00, FB#21, Pg 63-71

The Intended Plot Size of this Plan is 594MM by 841 mm

| | | |
|-------------------|-------------------------|---------------|
| 5 | | |
| 4 | | |
| 3 | | |
| 2 | | |
| 1 | | |
| 0 | ISSUED FOR TENDER | Aug. 10, 2018 |
| Revision/Revision | Description/Description | Date/Date |
| Client/client | | |
| Project | | |

Project title/Titre du projet

Lake Windermere Groyne
Marker Pile Installation

Consultant Signature Only

Designed by/Concept par Mark Burger

Drawn by/Dessiné par WSL

PWGSC Project Manager/Administrateur de Projets TP5GC
ALENA MIKULICA

Regional Manager, Architectural and Engineering Services
Gestionnaire régional, Services d'architecture et de génie, TP5GC

Drawing title/Titre du dessin

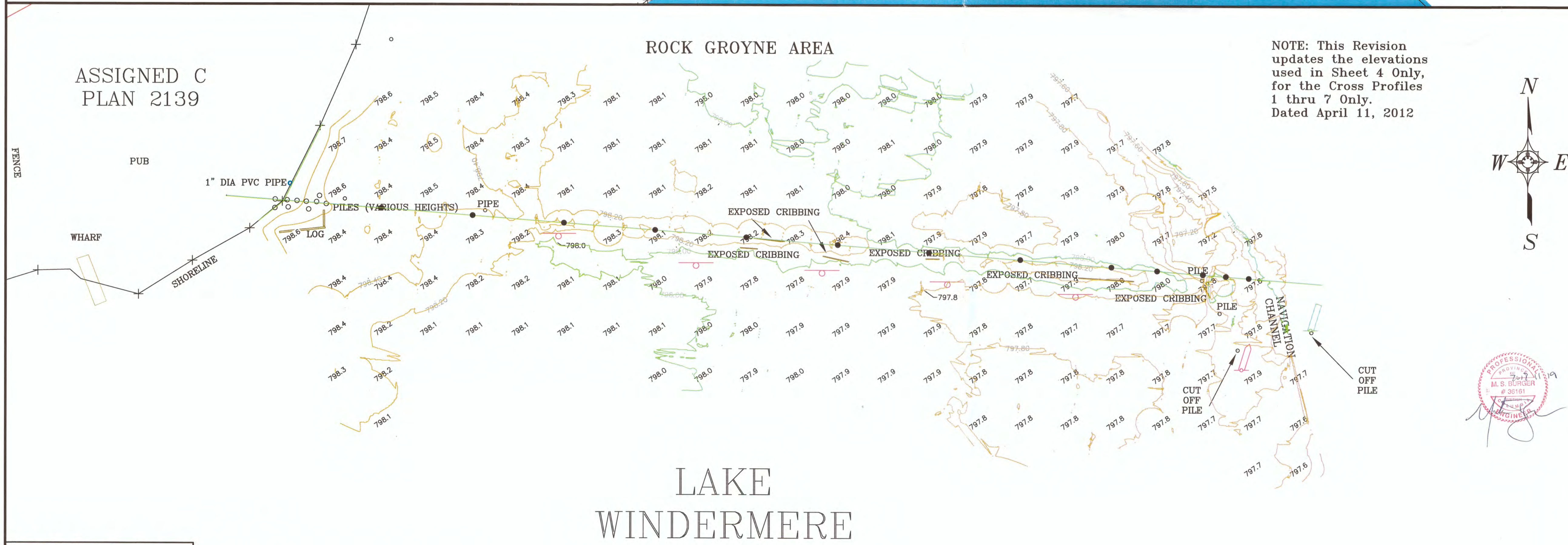
Sounding Plan

| Project No./No. du projet | Sheet/Feuille | Revision no./La Revision no. |
|---------------------------|---------------|------------------------------|
| R.074582.003 | 1 of 2 | 0 |

ASSIGNED C
PLAN 2139

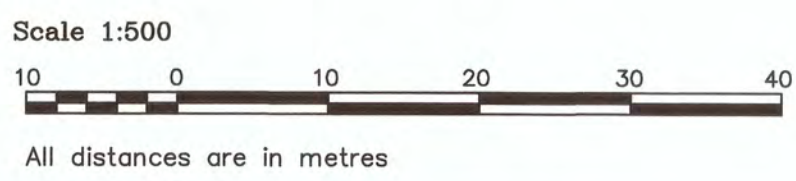
ROCK GROYPE AREA

NOTE: This Revision updates the elevations used in Sheet 4 Only, for the Cross Profiles 1 thru 7 Only.
Dated April 11, 2012



Public Works and Government Services Canada
Travaux publics et Services gouvernementaux Canada
Geomatics Services

#2-100 Annacis Parkway
New Westminster, B.C.
V3M 6A2
604-666-9994



All distances are in metres

This Plan lies within the East Kootenay Regional District

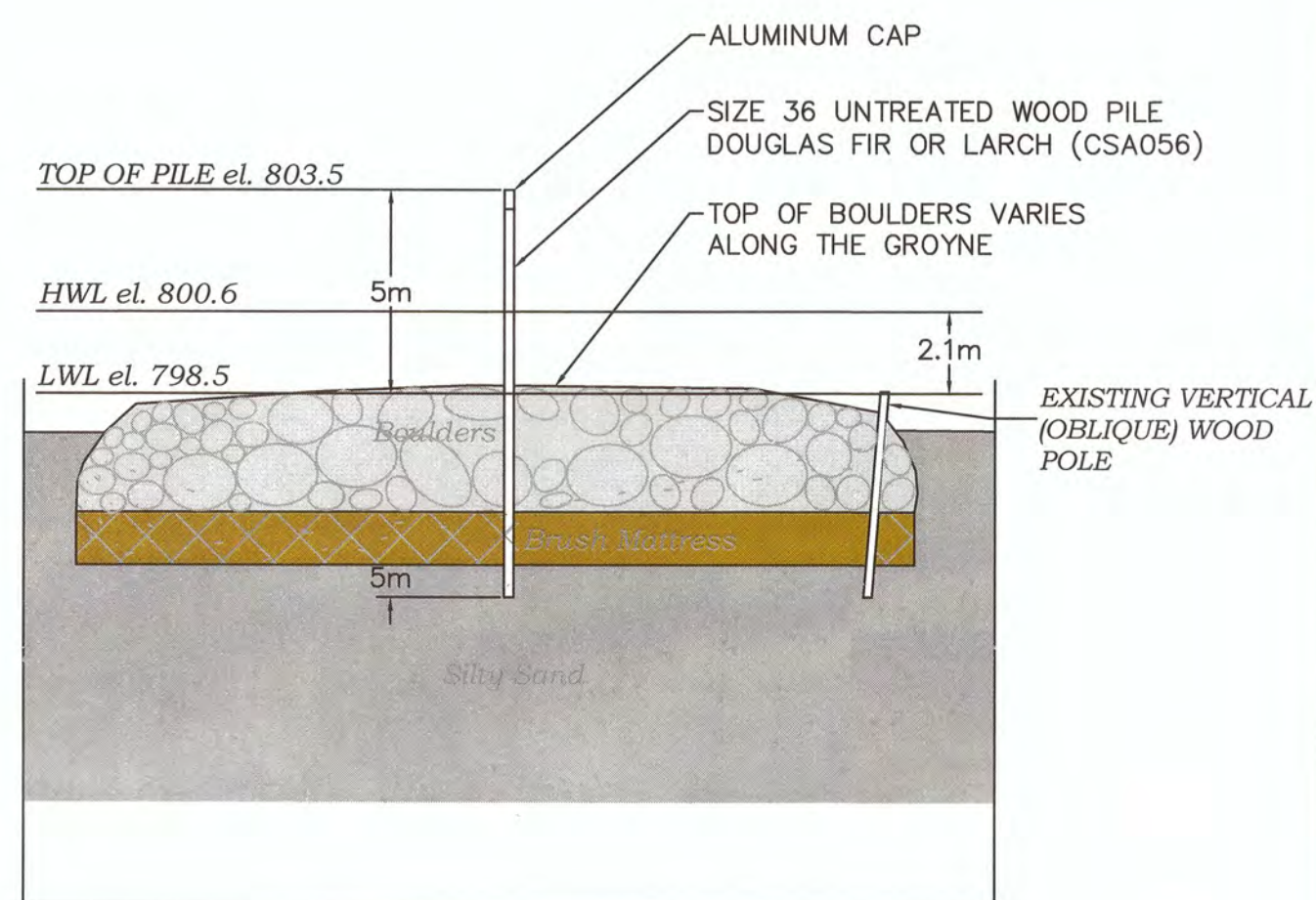


SK#5245.00

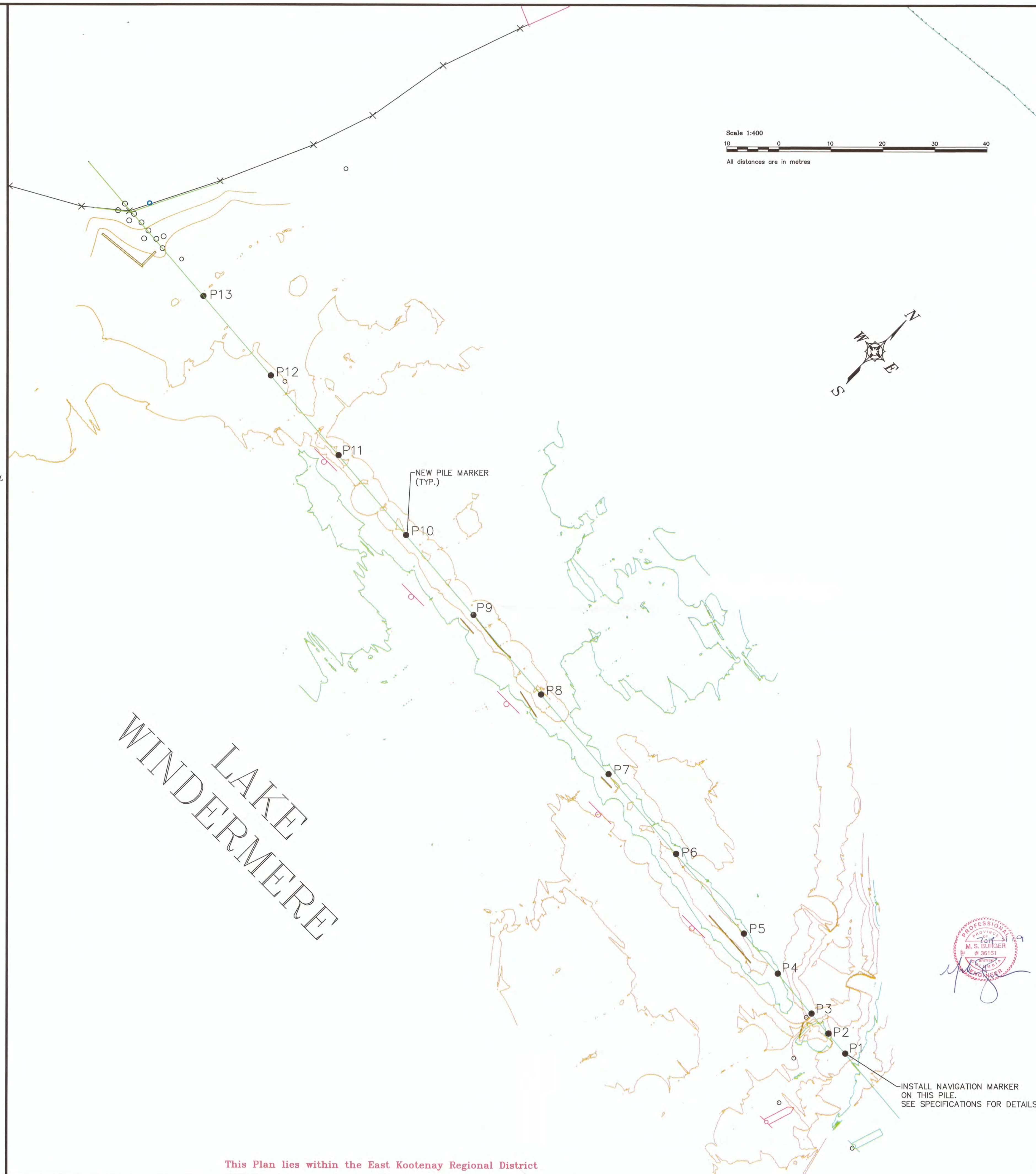
© 2012
COPYRIGHT

DM5194597

| PILE # | NORTHING | EASTING |
|--------|-------------|------------|
| P1 | 5596017.221 | 569663.810 |
| P2 | 5596017.611 | 569658.825 |
| P3 | 5596018.001 | 569653.840 |
| P4 | 5596018.781 | 569643.871 |
| P5 | 5596019.562 | 569633.901 |
| P6 | 5596021.123 | 569613.962 |
| P7 | 5596022.683 | 569594.023 |
| P8 | 5596024.244 | 569574.084 |
| P9 | 5596025.805 | 569554.145 |
| P10 | 5596027.365 | 569534.206 |
| P11 | 5596028.926 | 569514.267 |
| P12 | 5596030.487 | 569494.328 |
| P13 | 5596032.047 | 569474.389 |



TYPICAL PILE MARKER CROSS SECTION
NTS

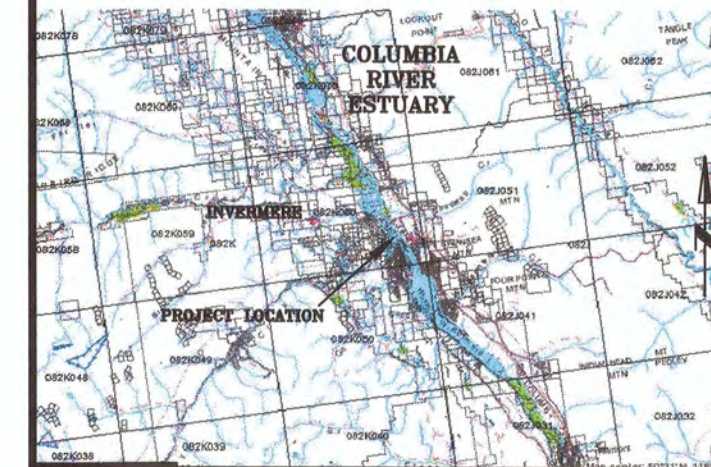


This Plan lies within the East Kootenay Regional District.



REAL PROPERTY SERVICES
Pacific Region
SERVICES IMMOBILIERS
Région de Pacifique

Location Map BCGS 82K.060



Bearings are Grid, and Derived from Dual Frequency Differential GPS Observations Between Hub (753) and Hub (754) and Invermere Active Control Point (GCM 164418) and Referenced to the 117th Meridian.

Elevations are derived from GPS Observations and are Orthometric and are Referenced to Canadian Geodetic Vertical Datum 1928 (Ht2.0). All Distances are Ground Unless Otherwise Noted. To Calculate Grid distance, Multiply by the Combined Scale Factor 0.99953610

This Plan was prepared for survey information purposes and is for the exclusive use of our client. The signatory accepts no responsibility or liability for any damages that may be suffered by a third part as a result of reproduction, transmission or alteration to this document without consent of the signatory .

Date of Survey Sept 21-22, 2010 By
I.R.Robertson, BCLS

SF#3249.00, FB#21, Pg 63-71

The Intended Plot Size of this Plan is
594MM by 841 mm

| | | |
|--|-------------------------|---------------|
| 5 | | |
| 4 | | |
| 3 | | |
| 2 | | |
| 1 | | |
| 0 | ISSUED FOR TENDER | Aug. 10, 2018 |
| Revision/ Revision/ Client/client project | Description/Description | Date/Date |

Project title/Titre du projet

Lake Windermere
Groyne
Marker Pile Installation

| |
|---------------------------|
| Consultant Signature Only |
|---------------------------|

Designed by/Concept par
Mark Burger

Drawn by/Dessine par WSL

PWGSC Project Manager/Administrateur de Projets TPSGC
ALENA MIKULICA

Regional Manager, Architectural and Engineering Services
Gestionnaire régionale, Services d'architectural et de génie, TPSGC

Drawing title/Titre du dessin

Cross Sections and Key Plan

Project No./No. du projet
R.074582.003

| | |
|---|---------------------------------|
| 3 | Sheet/Feuille 2 OF |
|---|---------------------------------|

| | |
|------------------------------------|--|
| Revision no. La Révision no. | |
|------------------------------------|--|