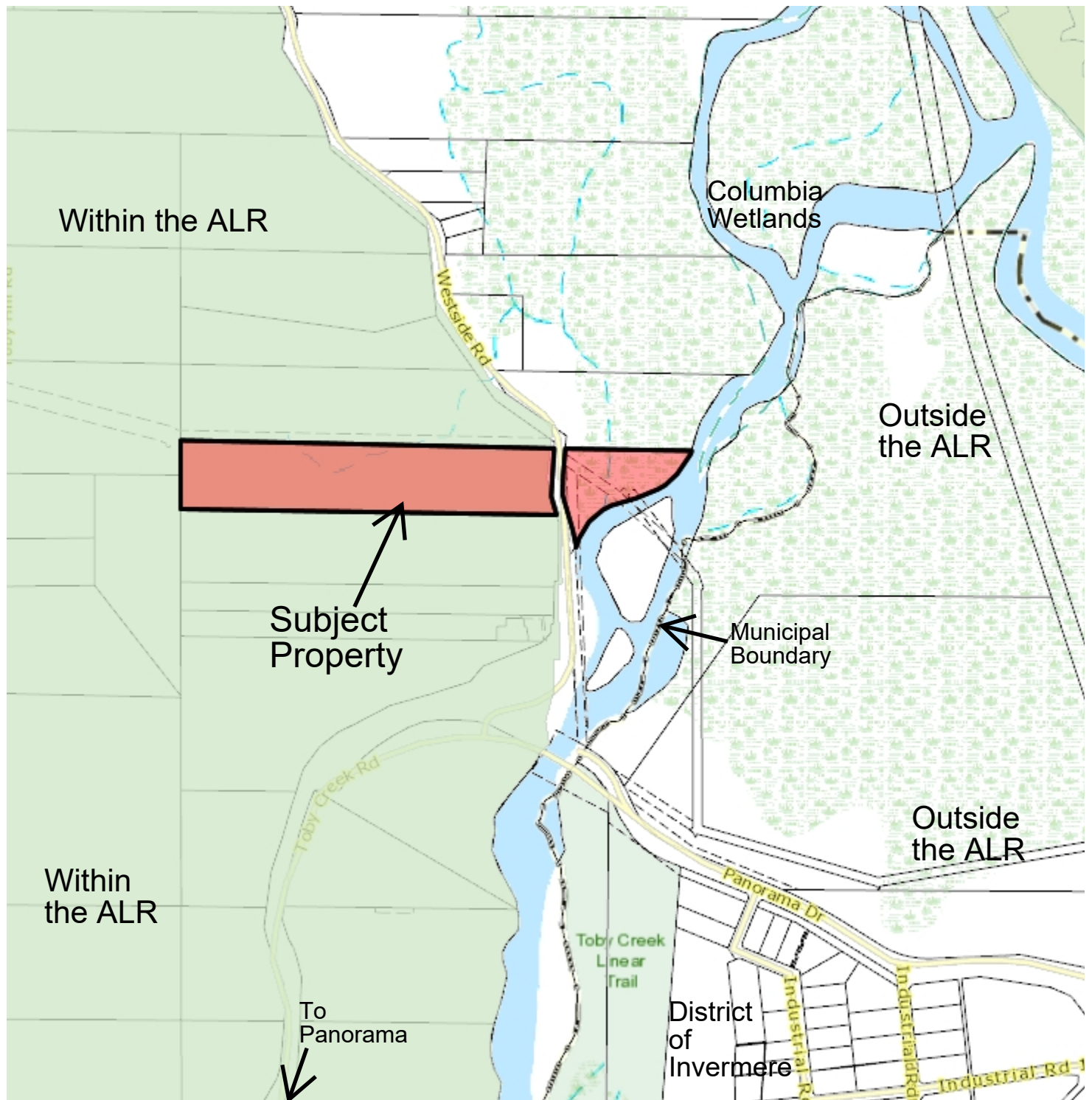


ALR Boundary Map



Notes:

388 0 194 388 Meters

WGS_1984_Web_Mercator_Auxiliary_Sphere
RDEK GeoViewer - 4-1-2025 2:11 PM

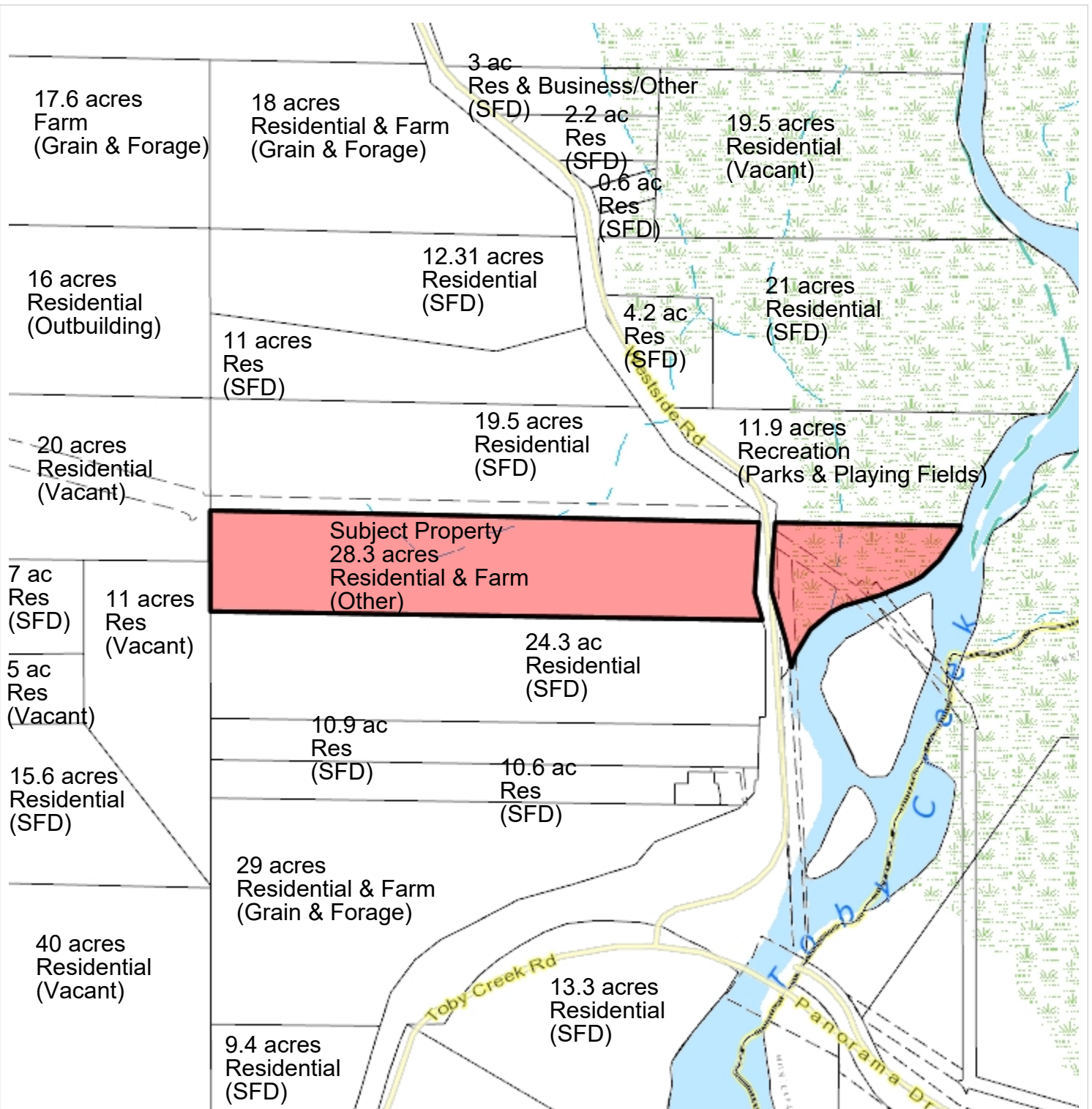
Scale = 1: 15,534



THIS MAP IS NOT TO BE USED FOR NAVIGATION

This map is a user generated static output from an Internet mapping site and is for reference only. Data layers that appear on this map may or may not be accurate, current, or otherwise reliable.

Land Use Map



Notes:

263 0 131 263 Meters

WGS_1984_Web_Mercator_Auxiliary_Sphere
RDEK GeoViewer - 4-1-2025 2:20 PM

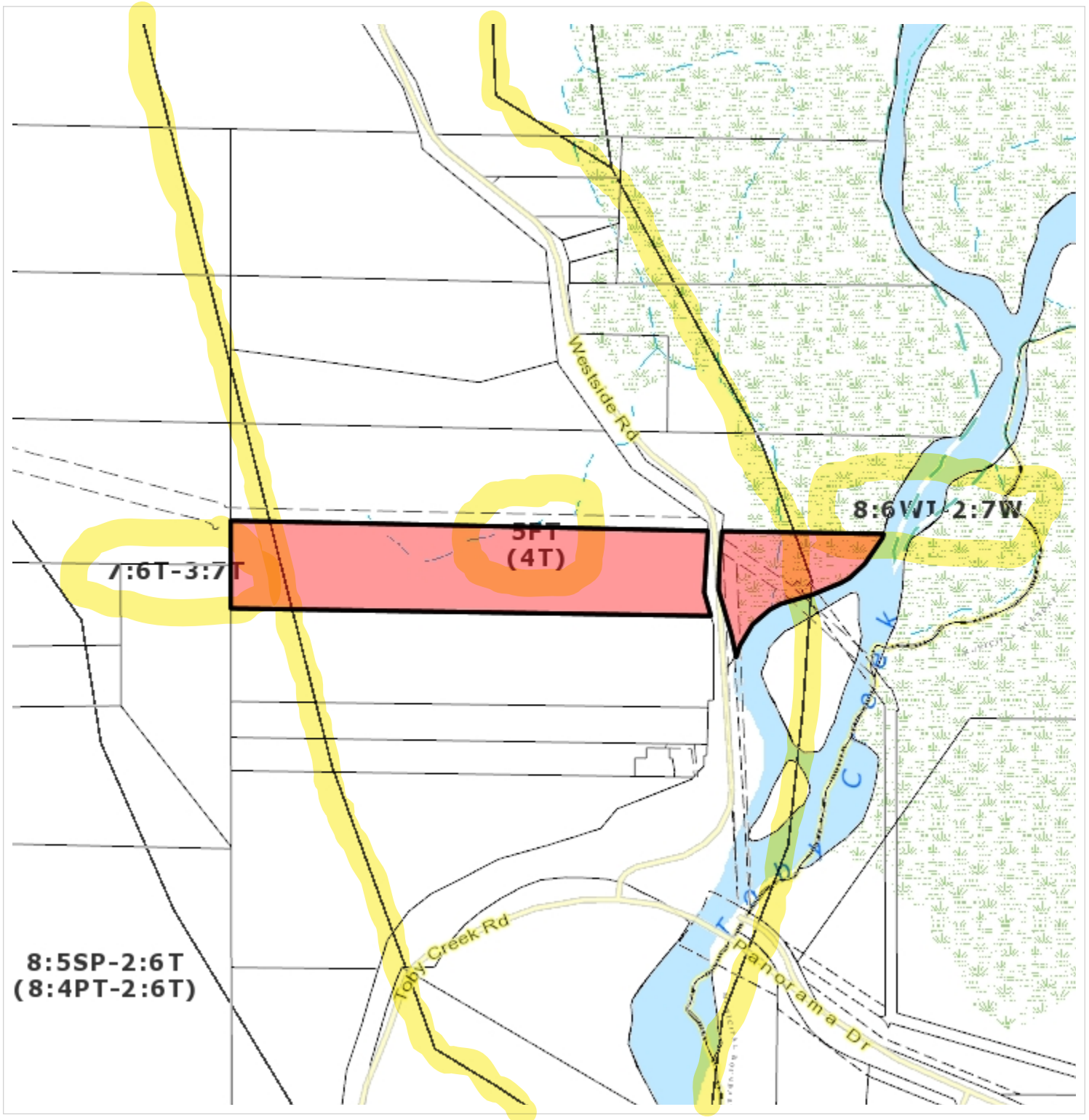
Scale = 1: 10,500



THIS MAP IS NOT TO BE USED FOR NAVIGATION

This map is a user generated static output from an Internet mapping site and is for reference only. Data layers that appear on this map may or may not be accurate, current, or otherwise reliable.

Agricultural Capability Map



Notes:

300 0 150 300 Meters

WGS_1984_Web_Mercator_Auxiliary_Sphere
RDEK GeoViewer - 4-1-2025 2:32 PM

Scale = 1: 12,000



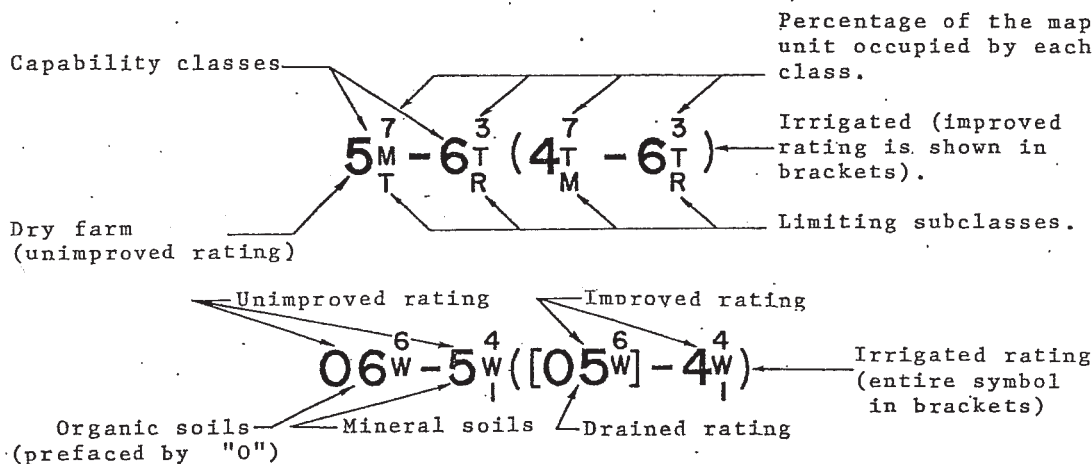
THIS MAP IS NOT TO BE USED FOR NAVIGATION

This map is a user generated static output from an Internet mapping site and is for reference only. Data layers that appear on this map may or may not be accurate, current, or otherwise reliable.

KEY FOR INTERPRETATION OF AGRICULTURE CAPABILITY MANUSCRIPT MAPS (B.C.)

There are 7 capability classes for agriculture with 1 representing the highest class and 7 representing the lowest. In some areas of the province, two ratings are shown: one for dry farming and a second for irrigated or drained (improved) conditions. The irrigated ratings are shown enclosed in round brackets while the drained ratings appear in square brackets. In all cases improved ratings have precedence over dry farm ratings.

Example Classifications



The agriculture capability classes are determined on the relative range of crops the land can produce.

a) Capability Classes

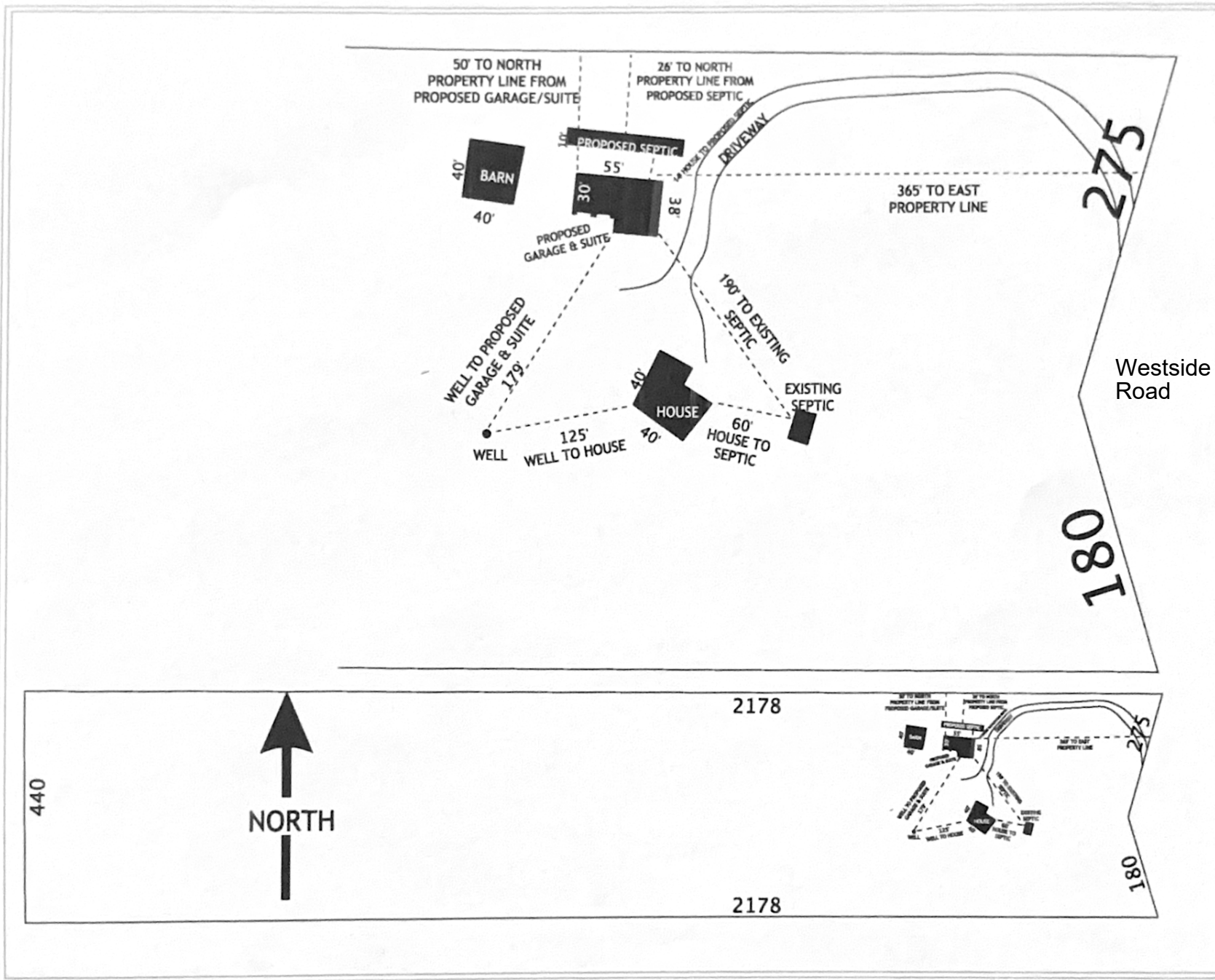
- Class 1 - widest range of crops
- Class 2 } reduced range of crops caused by a number of limiting
- Class 3 } factors (subclasses)
- Class 4 }
- Class 5 - only permanent pasture or forage
- Class 6 - natural grazing
- Class 7 - no productivity

b) Limiting Subclasses

- C - adverse climate
- D - undesirable soil structure
- E - erosion
- F - low fertility
- I - inundation (flooding)
- M - moisture deficiency (droughtiness)
- N - salts
- P - stoniness
- R - bedrock near the surface
- T - topography (slope)
- W - excess water
- X - combination of soil factors
- S - cumulative and minor adverse characteristics

Tree fruit and grape growing areas: these crops are tolerant of soil conditions that limit field crops. Steep and stonier soils in suited climates have been upgraded to accommodate the expanded range of crops. e.g. A class 5T soil dry farmed becomes a 3T irrigated in an area climatically suited to tree fruits.

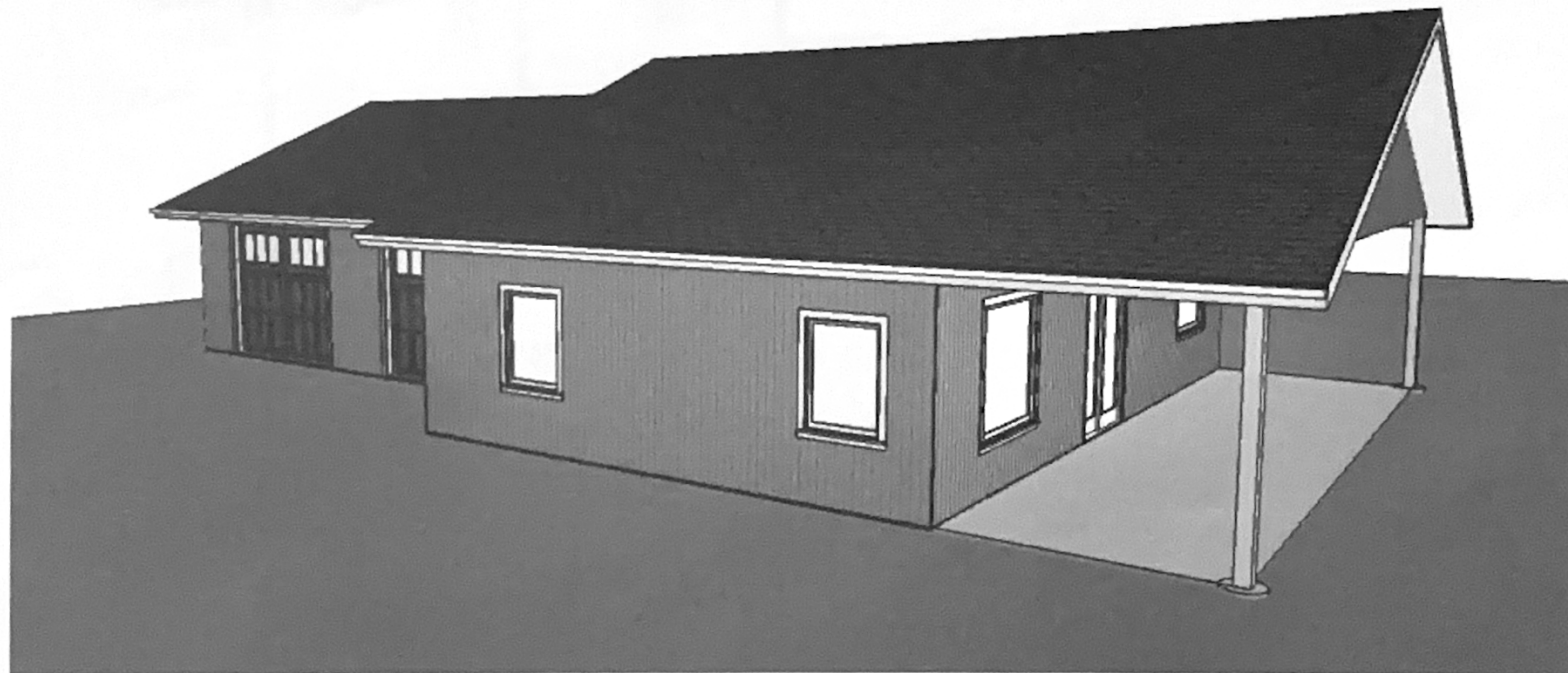
Note: A more detailed 16 page manual entitled Soil Capability Classification for Agriculture is available from the Lands Directorate, Lands Forests and Wildlife Service, Department of the Environment, Ottawa, Ontario, K1A 0H3.



SHEET TITLE:	
NO.	DESCRIPTION
PROJECT DESCRIPTION:	
SIMMONDS SUITE	
DRAWINGS PROVIDED BY:	
DATE:	
Jan 2025	
SCALE:	
N/A	
SHEET:	
A-8	

Square Footage Table

Main Floor 950
Garage 900
Covered Patio 380



NO.	DESCRIPTION	BY	DATE

SHEET TITLE:
TITLE PAGE

PROJECT DESCRIPTION:
SIMMONDS
SUITE

ADDRESS:
81 WESTSIDE ROAD
INVERMERE
VICTORIA

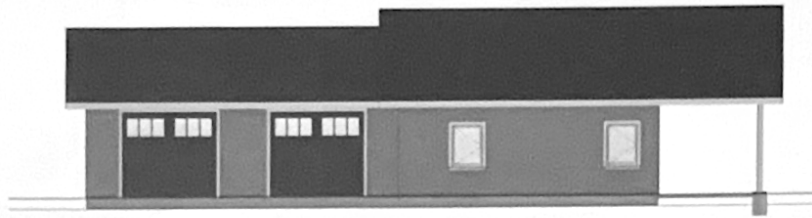
DATE:

JAN 2025

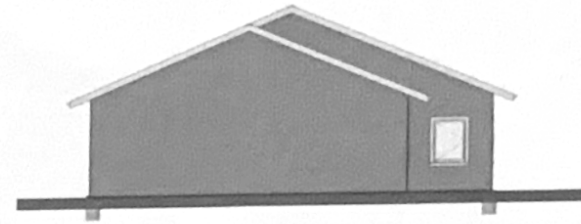
SCALE:

SHEET:

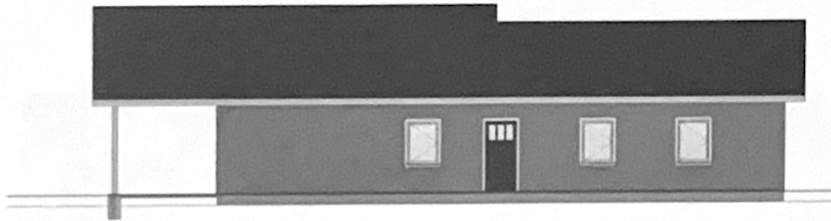
A-1



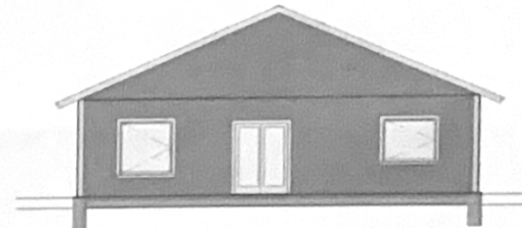
North



West



South



East

NO.	DESCRIPTION	BY	DATE

SHEET TITLE
Elevations

PROJECT DESCRIPTION
**SIMMONDS
SUITE**

DRAWINGS PROVIDED BY:

DATE:

Jan 2025

SCALE:

1/8

SHEET:

A-6

Aerial Photo



Notes:

150 0 75 150 Meters

WGS_1984_Web_Mercator_Auxiliary_Sphere
RDEK GeoViewer - 4-2-2025 10:28 AM

Scale = 1: 6,000



THIS MAP IS NOT TO BE USED FOR NAVIGATION

This map is a user generated static output from an Internet mapping site and is for reference only. Data layers that appear on this map may or may not be accurate, current, or otherwise reliable.