

NAD 83
COORDINATES

NOTES

1. ALL PIPE SIZES ARE IN MILLIMETRES AND ALL DIMENSIONS ARE IN METRES UNLESS OTHERWISE NOTED.
2. ALL COORDINATES AND DISTANCES ARE BASED ON 3TM COORDINATE SYSTEM (NAD 83).
3. CONCRETE FOR ANCHORS BLOCKS SHALL HAVE THE FOLLOWING CHARACTERISTICS:
MINIMUM OF 12 ANCHOR BLOCKS UNITS
DISTANCE BETWEEN ANCHORS SHALL BE A MAXIMUM OF 2m APART WITH A MINIMUM WEIGHT OF 110 kg PER ANCHOR
CONCRETE SHALL HAVE COMPRESSIVE STRENGTH OF 30MPa AT 28 DAYS.
CONCRETE DESIGNED FOR EXPOSURE CLASS C-3
MATERIALS:
 - CEMENT TO BY TYPE GU OR GUL AND CONFORM TO CSA A3000
 - 12% TYPE F FLY ASH MINIMUM BY MASS OF CEMENTING MATERIALS AND CONFORM TO CSA A3000 FOR TYPE F FLY ASH
 - 8% SILICA FUME BY MASS OF CEMENTING MATERIALS AND CONFORM TO CSA A3000 FOR TYPE SF SILICA 3 MIX PROPORTIONS
 - CEMENT CONTENT NOT LESS THAN 400 kg/m³
 - WATER CEMENT RATIO NO GREATER THAN 0.40

NO.	DESCRIPTION	DATE (YYYY-MM-DD)	BY	APPD
5	ISSUED FOR SUBMISSION	2025-12-18	BB	GD
4	RE-DESIGN ISSUED FOR REVIEW	2025-09-10	BB	GD
3	ISSUED FOR TENDER	2025-04-28	BB	GD
2	ISSUED FOR APPROVAL	2024-09-24	BB	GD
1	ISSUED FOR REVIEW	2024-08-21	BB	GD

ISSUED FOR INFORMATION

	BY	DATE (YYYY-MM-DD)
DESIGNED	BB	2024-08-20
DRAWN	BB	2024-08-20
CHECKED	GD	2024-08-20

SCALE: NOT TO SCALE



PROJECT
BAYNES LAKE DRY HYDRANT

SHEET TITLE
PLAN PROFILE

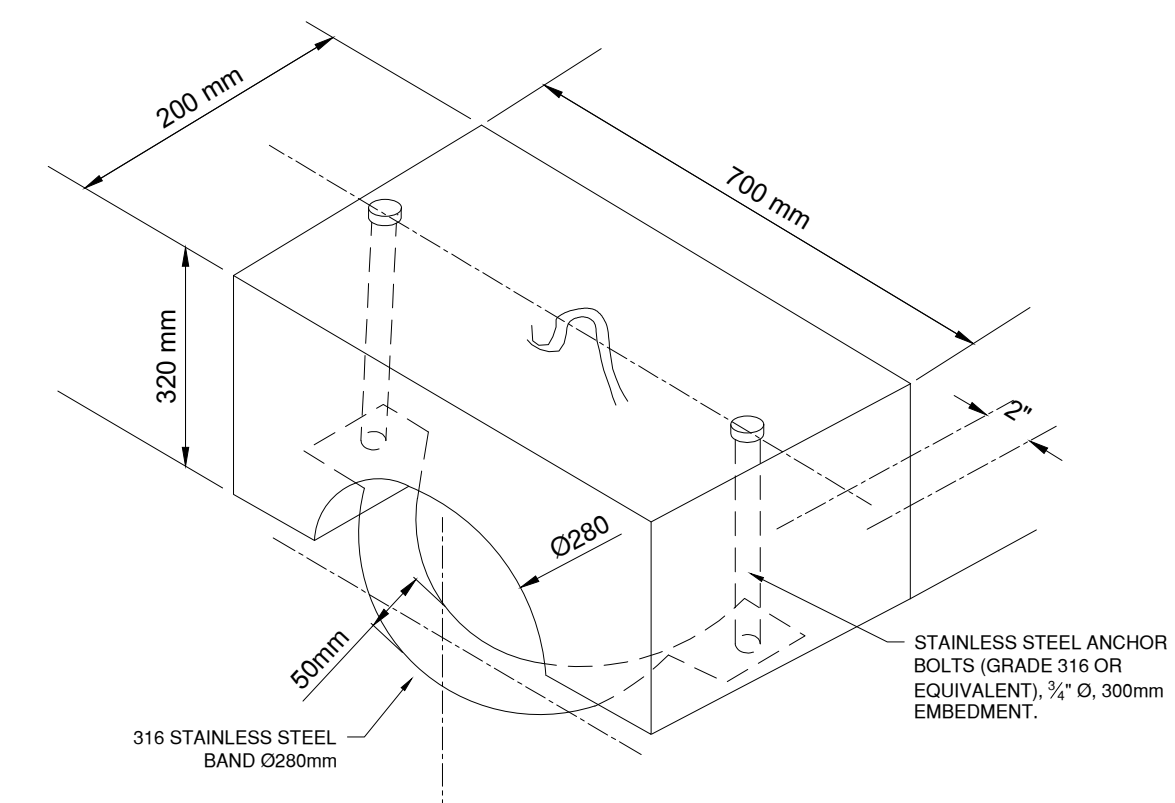
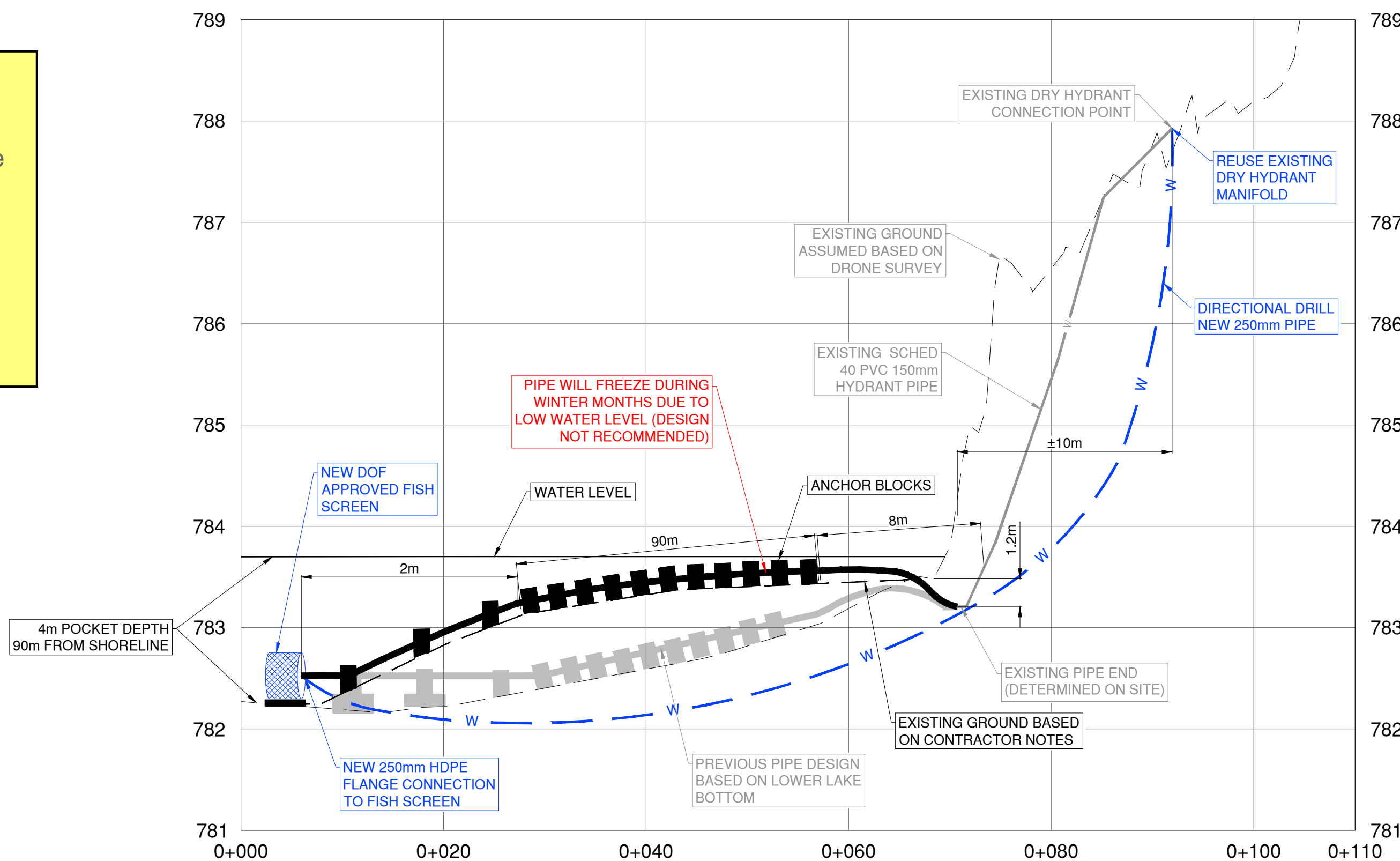
FILE NO. 250902_Dry_Hydrant_Fish_Screen.dwg	ENG DWG NO.
SHEET ID. C-01	SHEET NO. 1
BY BB	DATE (YYYY-MM-DD) 2024-08-20
DRAWN	PROFILE NO.

Legend:

GREY - Original concept, Original Lake bed dimension

BLACK - Design discussed with contractor - Updated lake bottom

BLUE - Proposed directional drilling scenario



A CONCRETE ANCHOR BLOCK DETAIL
SCALE: NOT TO SCALE

ELEVATION DATA THROUGH AERIAL DRONE SURVEY

FILE: C:\ADSK\KAC\DC\CS\ISL\28648 BAYNES LAKE DRY HYDRANT\PROJECT FILES\02_CADD\02_DRAFTING\02_PRODUCTION\250902_DRY_HYDRANT_FISH_SCREEN.DWG | DATE: Friday, January 23, 2026 10:05:27 AM