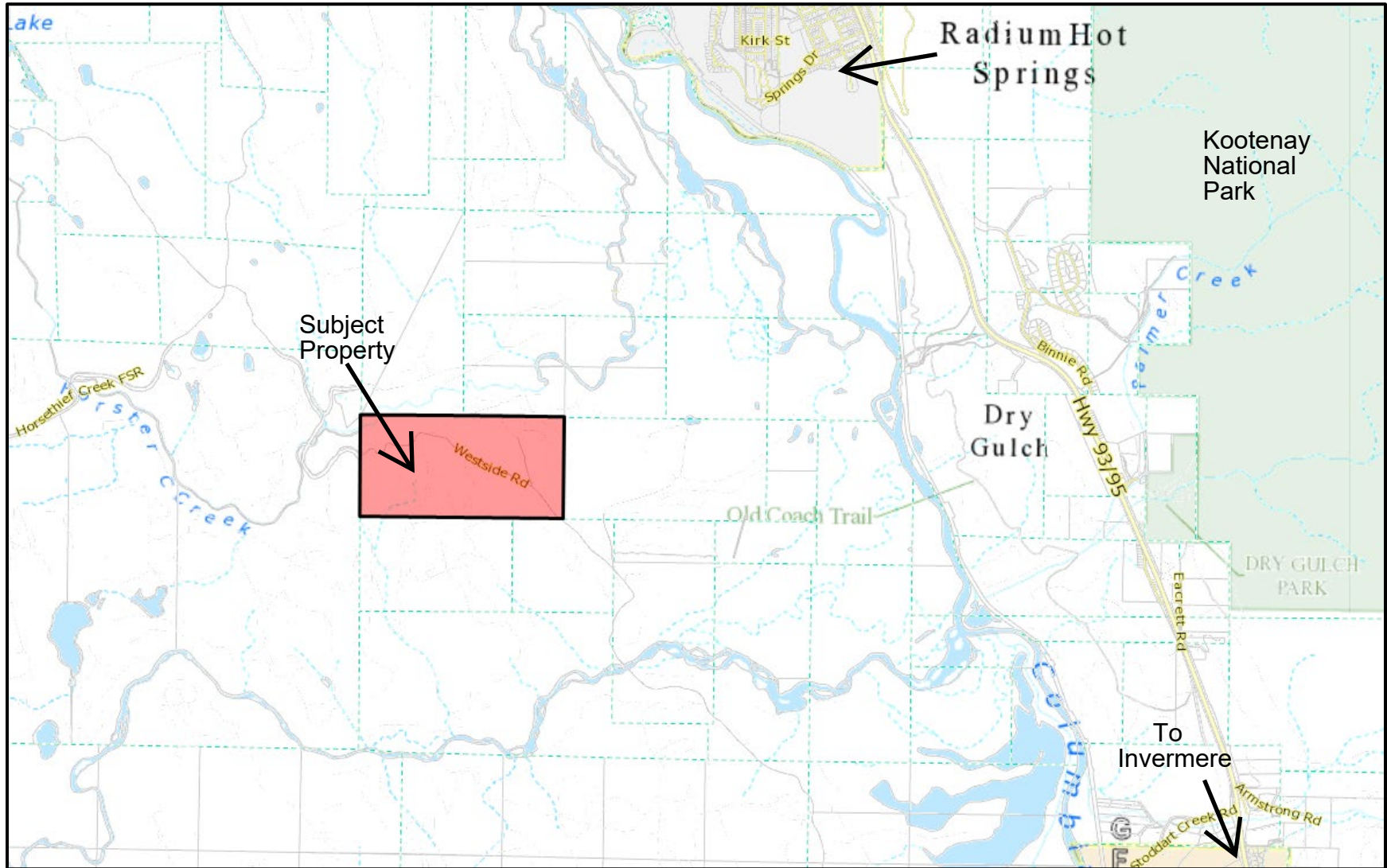
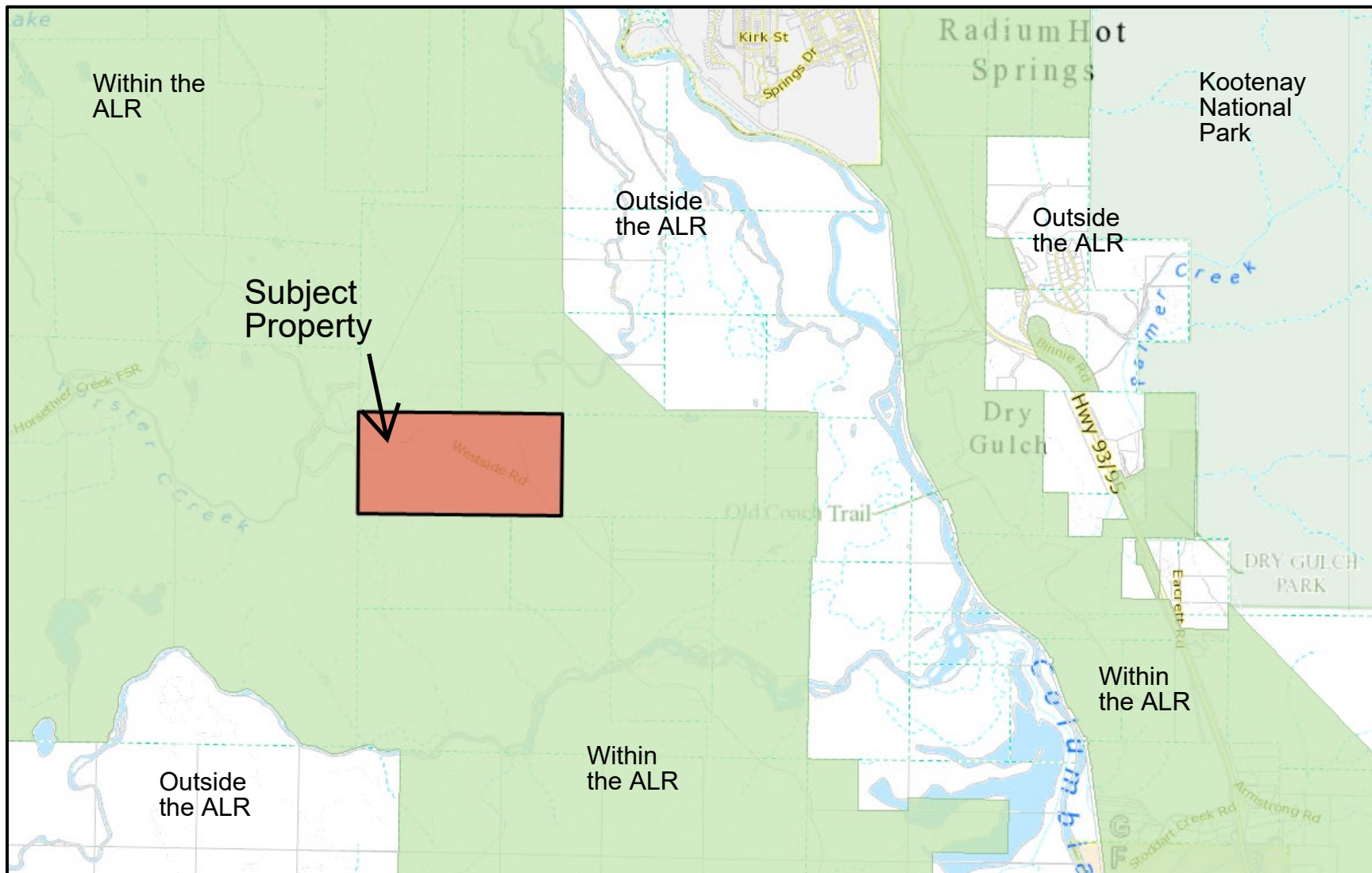


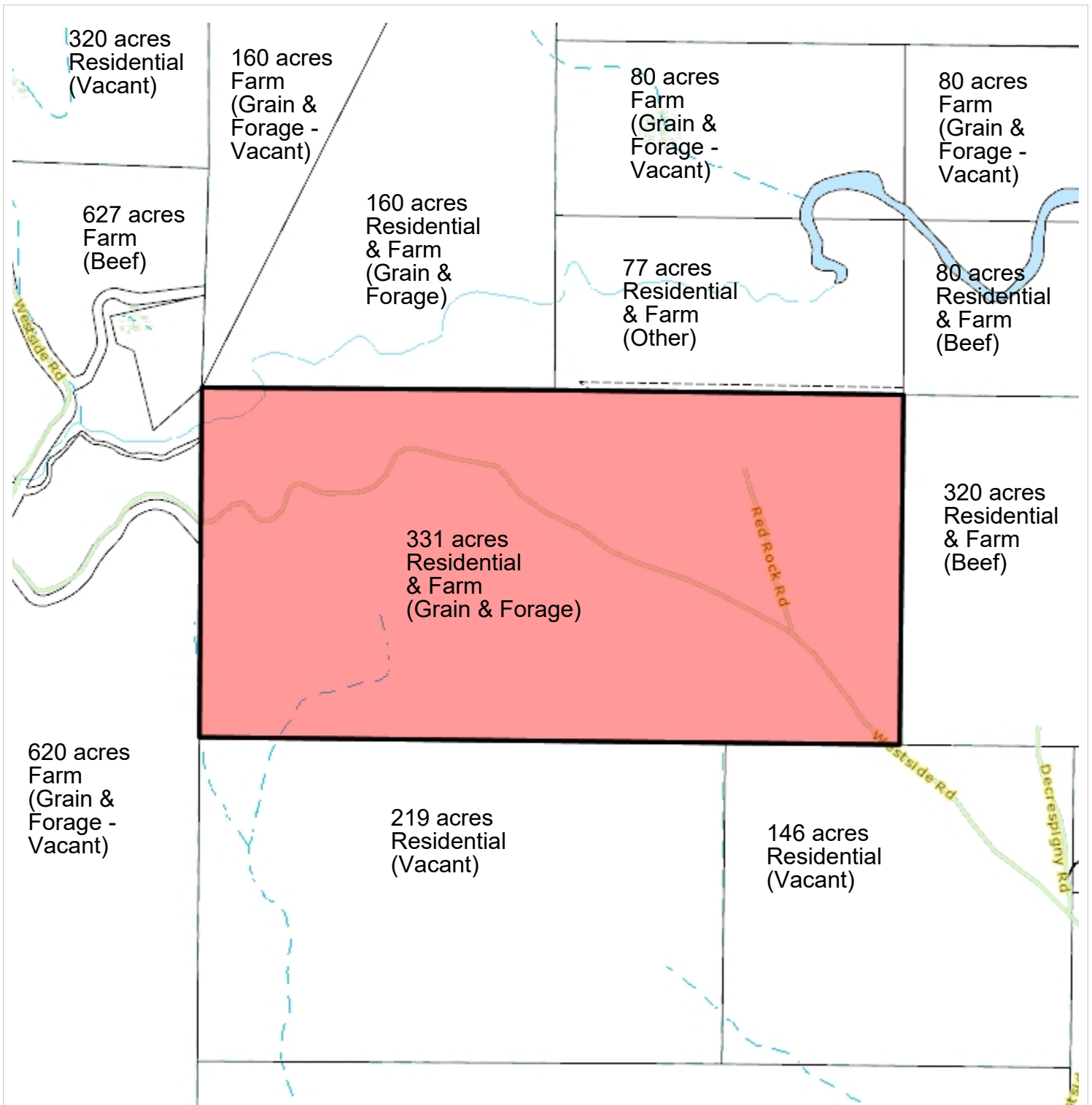
Location Map



ALR Boundary Map



Land Use Map



Notes:

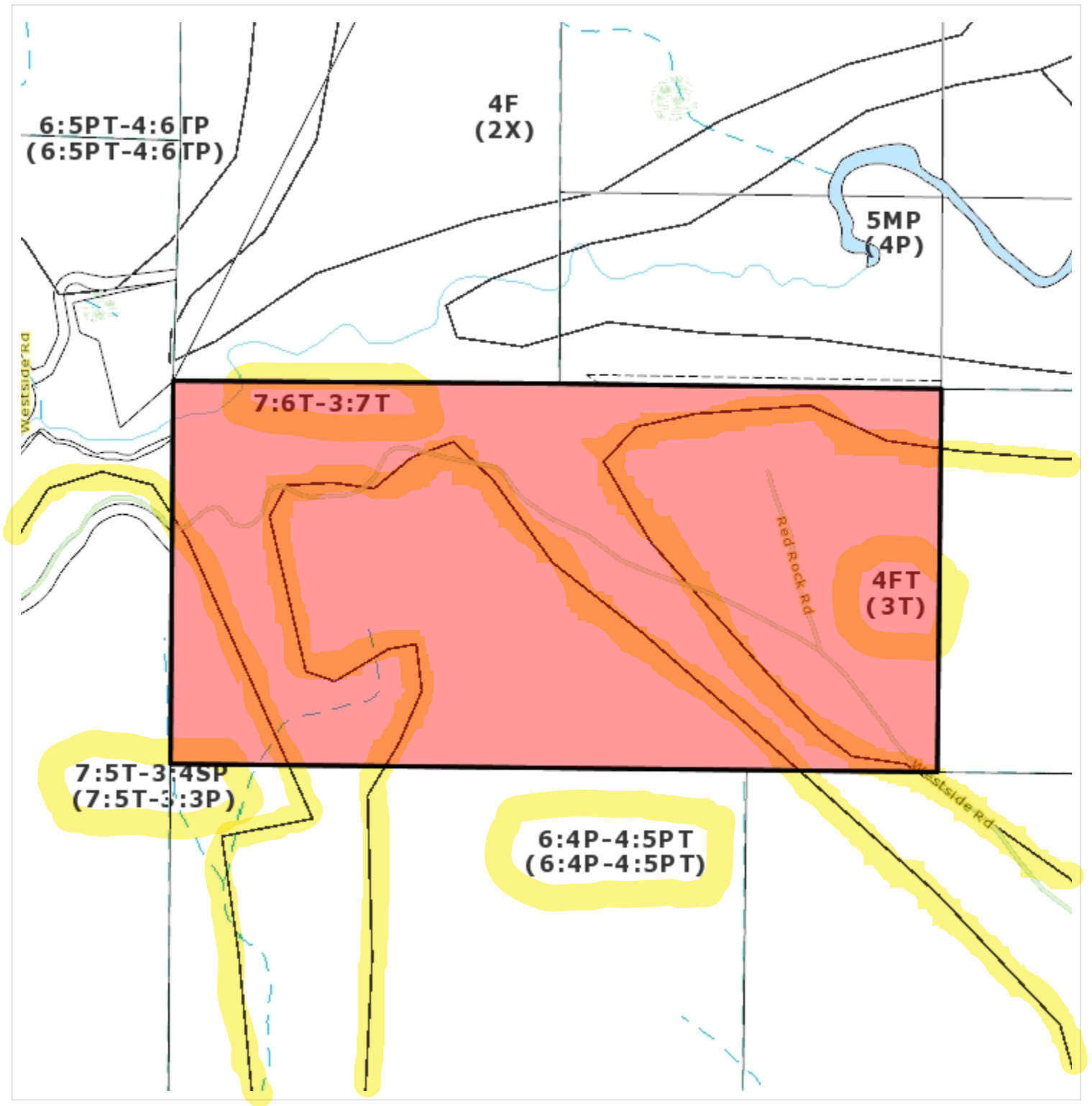


Scale = 1: 20,000



THIS MAP IS NOT TO BE USED FOR NAVIGATION

Agricultural Capability Map



Notes:

450 0 225 450 Meters

WGS_1984_Web_Mercator_Auxiliary_Sphere
RDEK GeoViewer - 3-23-2026 4:20 PM

Scale = 1: 18,000



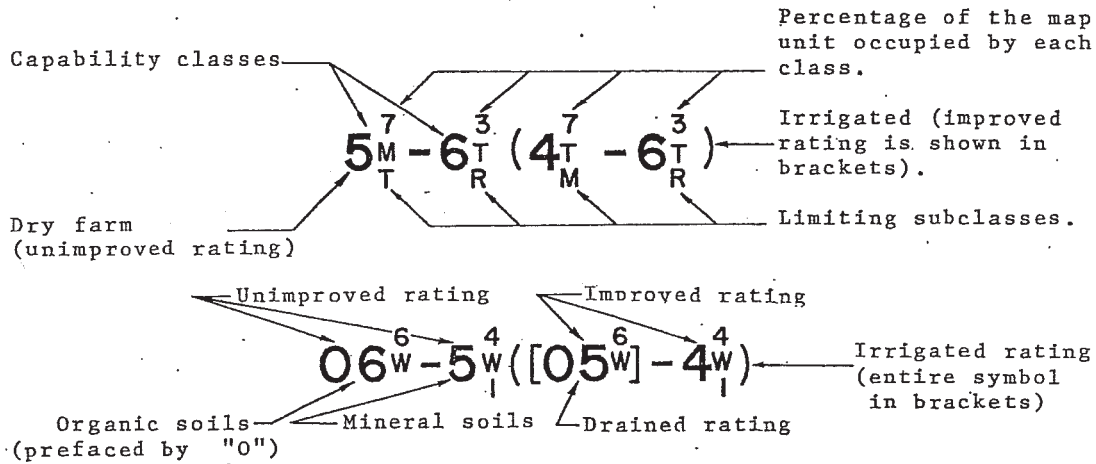
THIS MAP IS NOT TO BE USED FOR NAVIGATION

This map is a user generated static output from an Internet mapping site and is for reference only. Data layers that appear on this map may or may not be accurate, current, or otherwise reliable.

KEY FOR INTERPRETATION OF AGRICULTURE CAPABILITY MANUSCRIPT MAPS (B.C.)

There are 7 capability classes for agriculture with 1 representing the highest class and 7 representing the lowest. In some areas of the province, two ratings are shown: one for dry farming and a second for irrigated or drained (improved) conditions. The irrigated ratings are shown enclosed in round brackets while the drained ratings appear in square brackets. In all cases improved ratings have precedence over dry farm ratings.

Example Classifications



The agriculture capability classes are determined on the relative range of crops the land can produce.

a) Capability Classes

- Class 1 - widest range of crops
- Class 2
- Class 3 } reduced range of crops caused by a number of limiting
- Class 4 } factors (subclasses)
- Class 5 - only permanent pasture or forage
- Class 6 - natural grazing
- Class 7 - no productivity

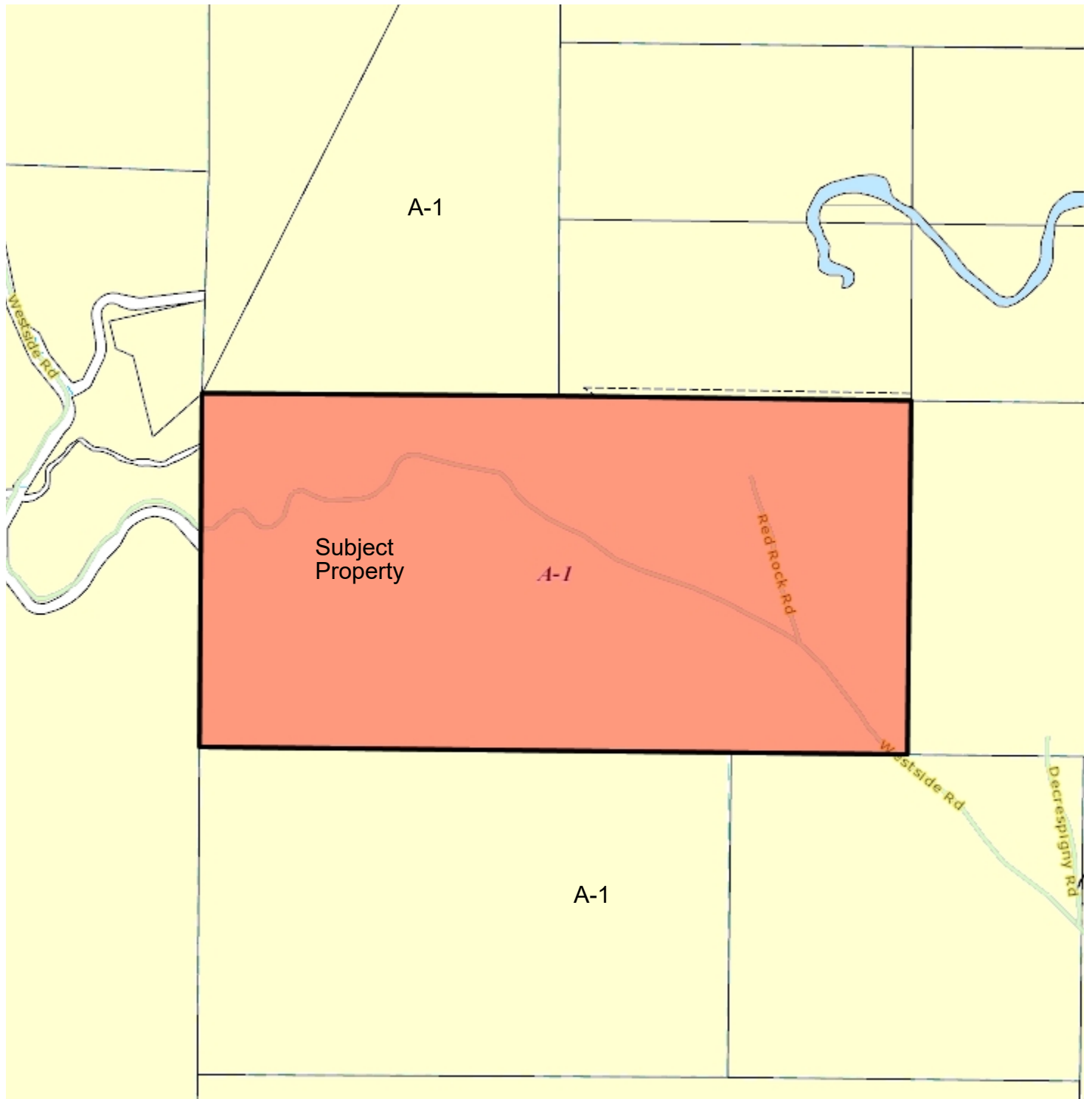
b) Limiting Subclasses

- C - adverse climate
- D - undesirable soil structure
- E - erosion
- F - low fertility
- I - inundation (flooding)
- M - moisture deficiency (droughtiness)
- N - salts
- P - stoniness
- R - bedrock near the surface
- T - topography (slope)
- W - excess water
- X - combination of soil factors
- S - cumulative and minor adverse characteristics

Tree fruit and grape growing areas: these crops are tolerant of soil conditions that limit field crops. Steep and stonier soils in suited climates have been upgraded to accommodate the expanded range of crops. e.g. A class 5T soil dry farmed becomes a 3T irrigated in an area climatically suited to tree fruits.

Note: A more detailed 16 page manual entitled Soil Capability Classification for Agriculture is available from the Lands Directorate, Lands Forests and Wildlife Service, Department of the Environment, Ottawa, Ontario, K1A 0H3.

Zone Designation Map



Notes:

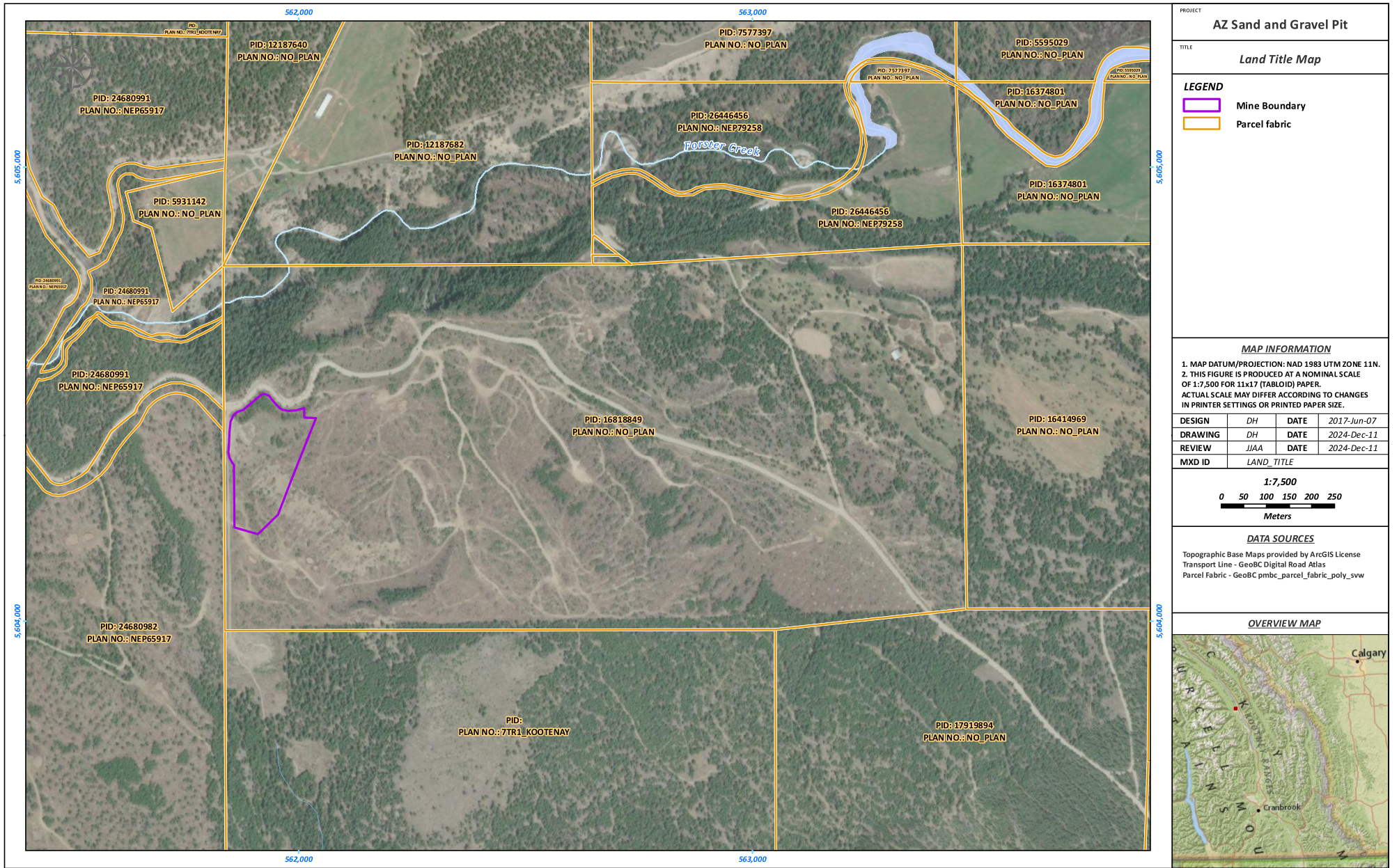
500 0 250 500 Meters

Scale = 1: 20,000

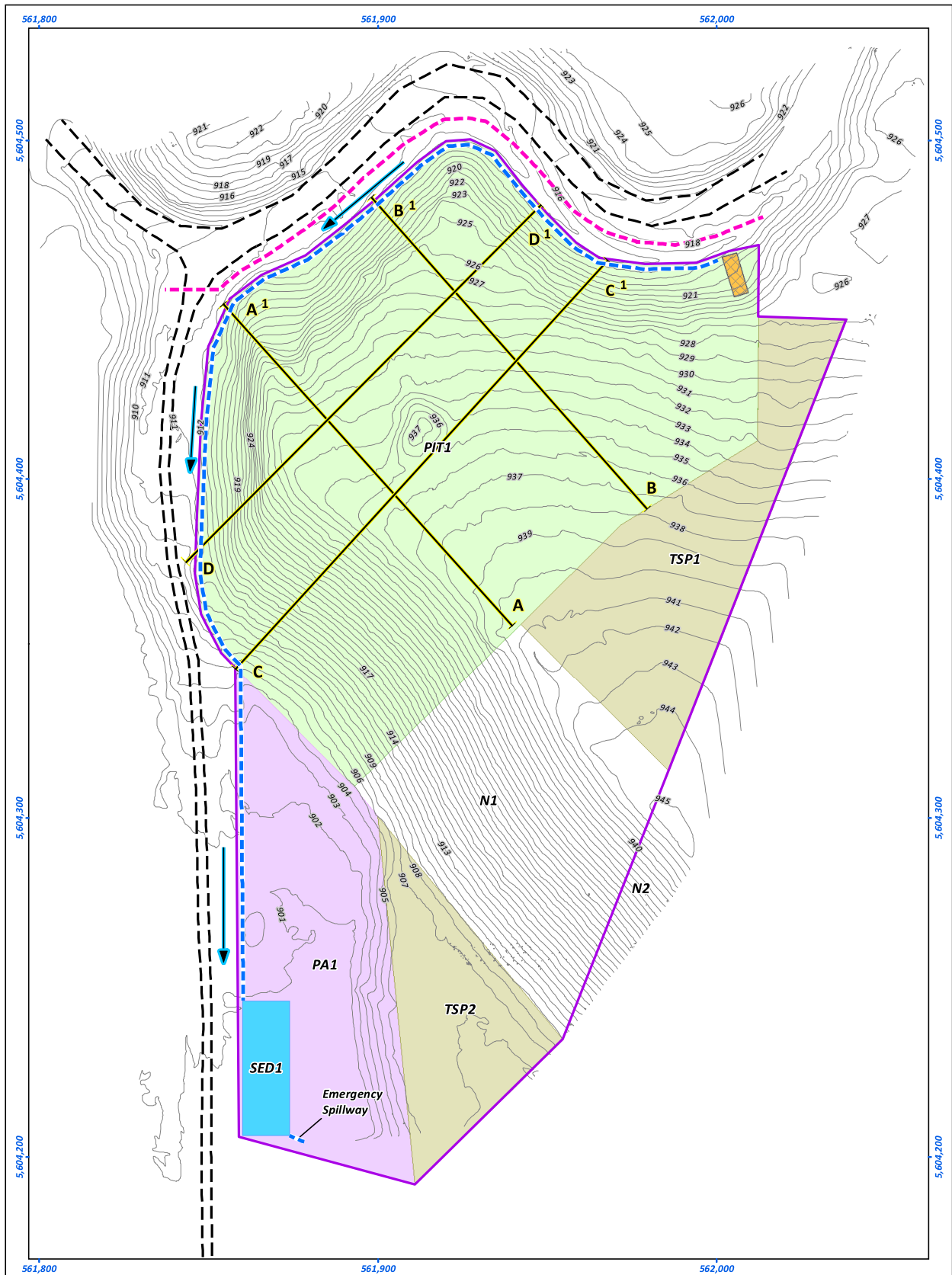


THIS MAP IS NOT TO BE USED FOR NAVIGATION

Site Plan



Mine Plan



PROJECT
AZ Sand and Gravel Pit

TITLE
Site Plan

Scale: 1:1,100
0 10 20 30 40 50 Meters

LEGEND

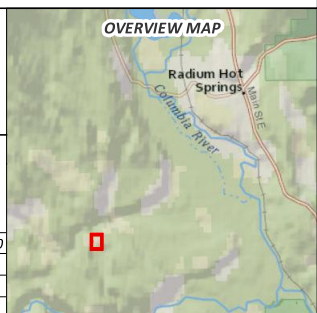
- Mine Boundary
- Pit
- Processing Area
- Topsoil Stockpile
- Berm
- Sedimentation Pond
- Cross Section
- Road Edge
- Mine Ditch
- Road Ditch
- Flow Direction

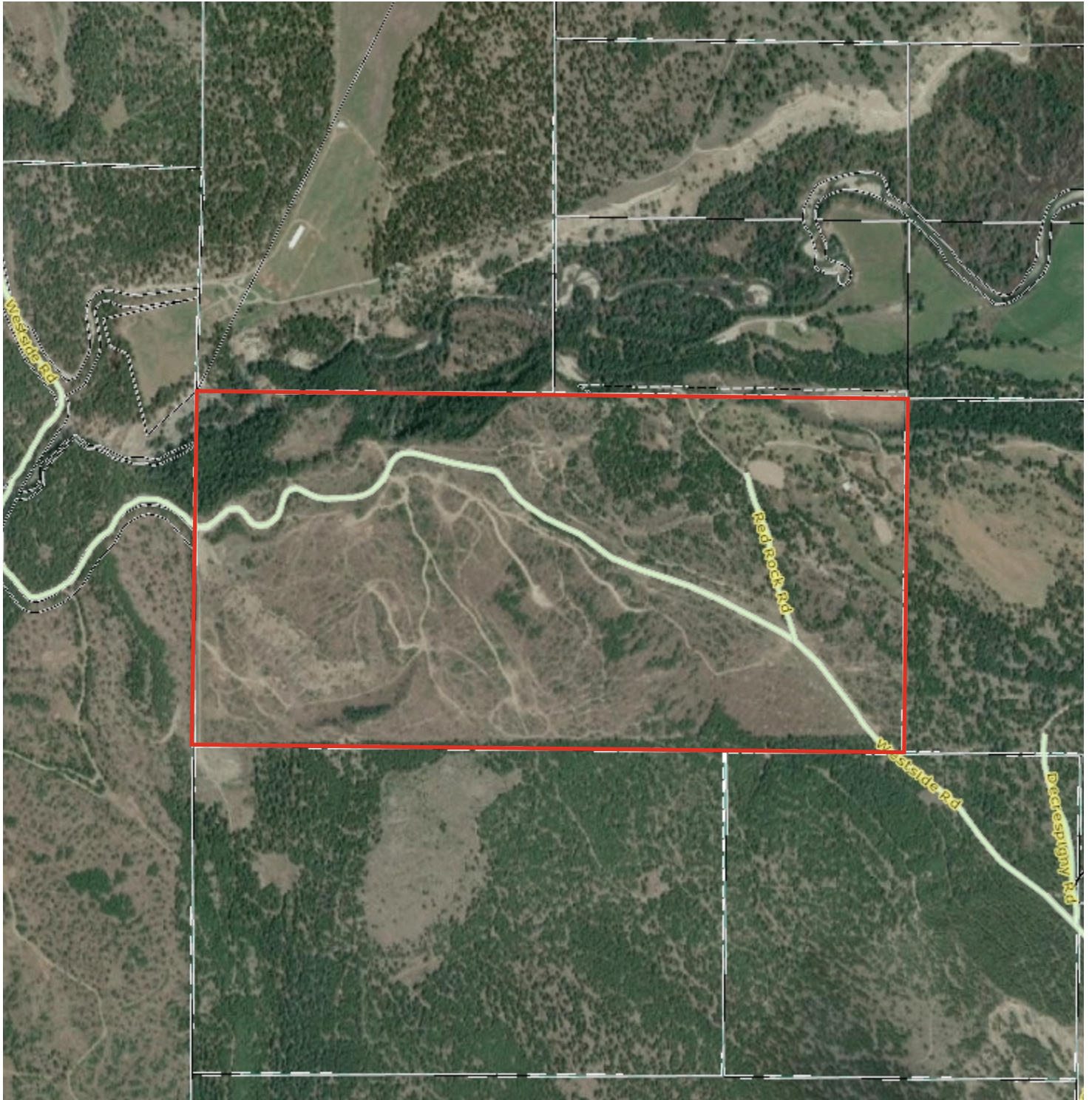
DATA SOURCES
Topographic Base Maps provided by ArcGIS License

MAP INFORMATION

- MAP PRODUCED BY VAST RESOURCE SOLUTIONS.
- MAP DATUM/PROJECTION: NAD 1983 UTM ZONE 11N.
- THIS FIGURE IS PRODUCED AT A NOMINAL SCALE OF 1:1,100 FOR 11x17 (TABLOID) PAPER.

DESIGN	DTH	DATE	2022-May-30
DRAWING	DTH	DATE	2025-Jan-13
REVIEW	JJAA	DATE	2025-Jan-13
FILE #	SITE_MAP		





Notes:

500 0 250 500 Meters

WGS_1984_Web_Mercator_Auxiliary_Sphere
RDEK GeoViewer - 3-23-2026 4:23 PM

Scale = 1:20,000



THIS MAP IS NOT TO BE USED FOR NAVIGATION

This map is a user generated static output from an Internet mapping site and is for reference only. Data layers that appear on this map may or may not be accurate, current, or otherwise reliable.